

NOTIFIABLE DISEASE cases are reported **through EpiSurv** NEW ZEALAND'S notifiable disease database

17,929 notifiable disease cases were reported through EpiSurv in **2017**

16,305 CASES were reported in **2016**

DISEASES WITH SIGNIFICANT INCREASES

(2017 compared with 2016)

- ▲ Cryptosporidiosis
- ▲ Hepatitis A
- ▲ Leptospirosis
- ▲ Meningococcal disease
- ▲ Mumps
- ▲ Pertussis
- ▲ Shigellosis
- ▲ Typhoid fever
- ▲ VTEC/STEC infection

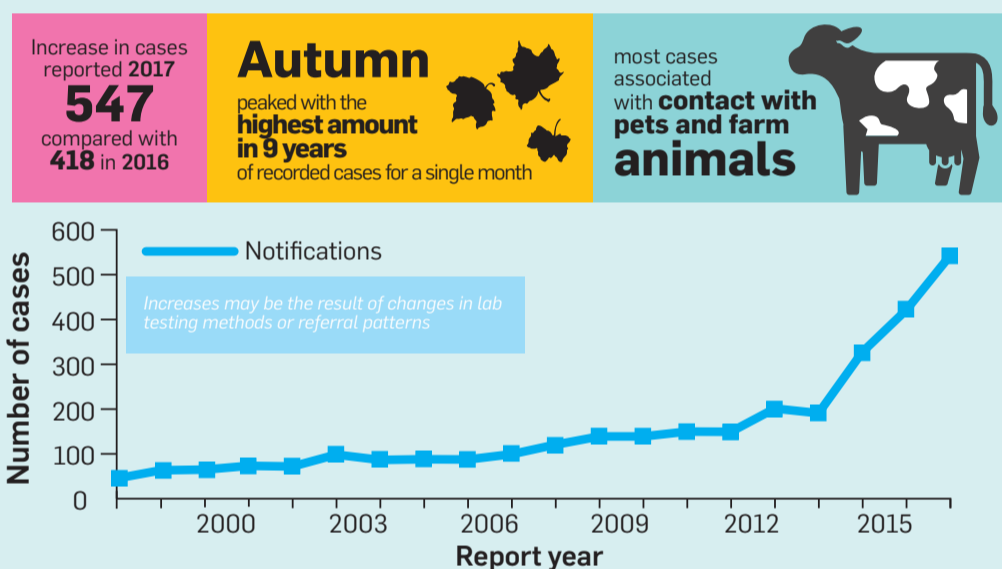
DISEASES WITH SIGNIFICANT DECREASES

(2017 compared with 2016)

- ▼ Campylobacteriosis
- ▼ Chikungunya fever
- ▼ Gastroenteritis (acute)
- ▼ Listeriosis
- ▼ Measles
- ▼ Zika virus

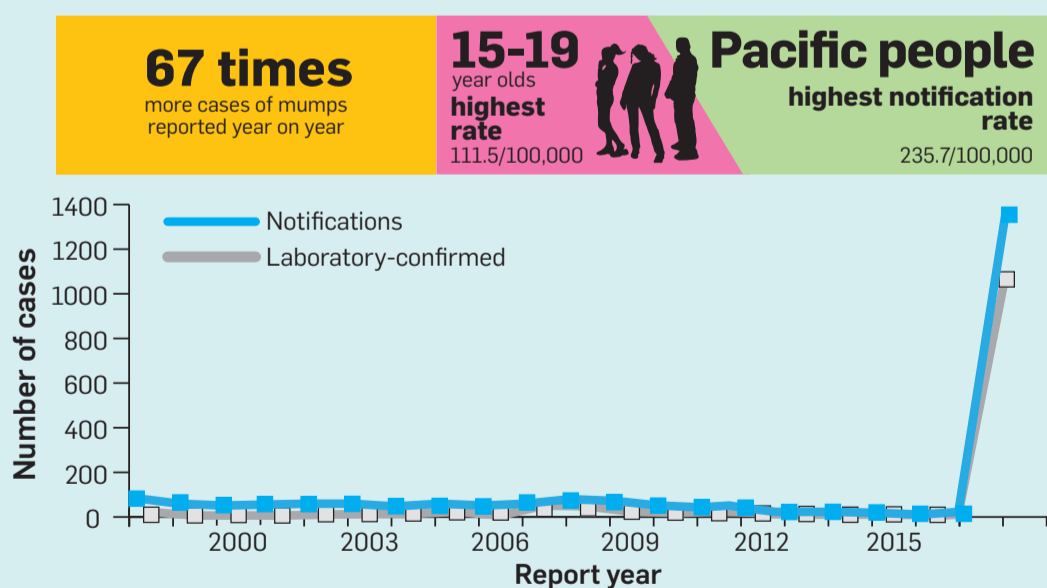
ENTERIC: VTEC/STEC

Figure 1. VTEC/STEC notifications by year, 1998–2017



VACCINE PREVENTABLE: MUMPS

Figure 2. Mumps notifications and laboratory-confirmed cases by year 1998–2017



Number of cases and rates for selected notifiable diseases in New Zealand, 2016 and 2017

| Disease | Number of notifications | | Rate per 100,000 | | Changed ^{d,e} |
|--------------------------------------|-------------------------|------|------------------|-------|------------------------|
| | 2016 | 2017 | 2016 | 2017 | |
| AIDS ^a | 23 | 12 | 0.5 | 0.3 | ▼ |
| Campylobacteriosis | 7456 | 6482 | 158.9 | 135.2 | ▼ |
| Chikungunya fever | 28 | 8 | 0.6 | 0.2 | ▼ |
| Cryptosporidiosis | 1062 | 1192 | 22.6 | 24.9 | ▲ |
| Dengue fever | 191 | 161 | 4.1 | 3.4 | ▼ |
| Gastroenteritis (acute) ^b | 513 | 325 | 10.9 | 6.8 | ▼ |
| Giardiasis | 1616 | 1648 | 34.4 | 34.4 | △ |
| Hepatitis A | 35 | 58 | 0.7 | 1.2 | ▲ |
| Hepatitis B ^c | 34 | 27 | 0.7 | 0.6 | ▼ |
| Hepatitis C ^c | 31 | 21 | 0.7 | 0.4 | ▼ |
| Invasive pneumococcal disease | 480 | 522 | 10.2 | 10.9 | △ |
| Legionellosis | 247 | 221 | 5.3 | 4.6 | ▼ |
| Leptospirosis | 85 | 142 | 1.8 | 3.0 | ▲ |
| Listeriosis | 36 | 21 | 0.8 | 0.4 | ▼ |
| Malaria | 26 | 42 | 0.6 | 0.9 | △ |
| Measles | 103 | 15 | 2.2 | 0.3 | ▼ |
| Meningococcal disease | 75 | 112 | 1.6 | 2.3 | ▲ |
| Mumps | 20 | 1337 | 0.4 | 27.9 | ▲ |
| Paratyphoid fever | 32 | 47 | 0.7 | 1.0 | △ |
| Pertussis | 1096 | 2143 | 23.3 | 44.7 | ▲ |
| Rheumatic fever ^f | 136 | 156 | 2.9 | 3.3 | △ |
| Salmonellosis | 1091 | 1119 | 23.2 | 23.3 | △ |
| Shigellosis | 174 | 245 | 3.7 | 5.1 | ▲ |
| Tuberculosis disease | 294 | 314 | 6.3 | 6.6 | △ |
| Typhoid fever | 38 | 60 | 0.8 | 1.3 | ▲ |
| VTEC/STEC infection | 418 | 547 | 8.9 | 11.4 | ▲ |
| Yersiniosis | 858 | 918 | 18.3 | 19.2 | △ |
| Zika virus | 100 | 11 | 2.1 | 0.2 | ▼ |

^a Data source: AIDS Epidemiology Group.

^b Cases of acute gastroenteritis from a common source or foodborne intoxication, eg, staphylococcal intoxication.

^c Only acute cases of this disease are notifiable.

^d ▼ = significant decrease, ▲ = significant increase, ▽ = not significant decrease, △ = not significant increase.

^e Fisher's exact tests were used to determine statistical significance. Results are considered statistically significant when the *P* value is less than or equal to 0.05.

^f Includes rheumatic fever initial attack and recurrent cases.

OTHER KEY FACTS

SHIGELLOSIS

40.8% increase

245 cases (3.1 per 100,000) in 2017 compared with 174 cases (3.7 per 100,000) in 2016

MEASLES

85.4% decrease

15 cases (0.3 per 100,000) in 2017 compared with 103 cases (2.2 per 100,000) in 2016

PERTUSSIS

96.1% increase

2143 cases in 2017 (44.7 per 100,000) compared with 1093 in 2016 (23.3 per 100,000)

CHIKUNGUNYA FEVER

71.4% decrease

8 cases (0.2 per 100,000) in 2017 compared with 28 cases (0.6 per 100,000) in 2016

