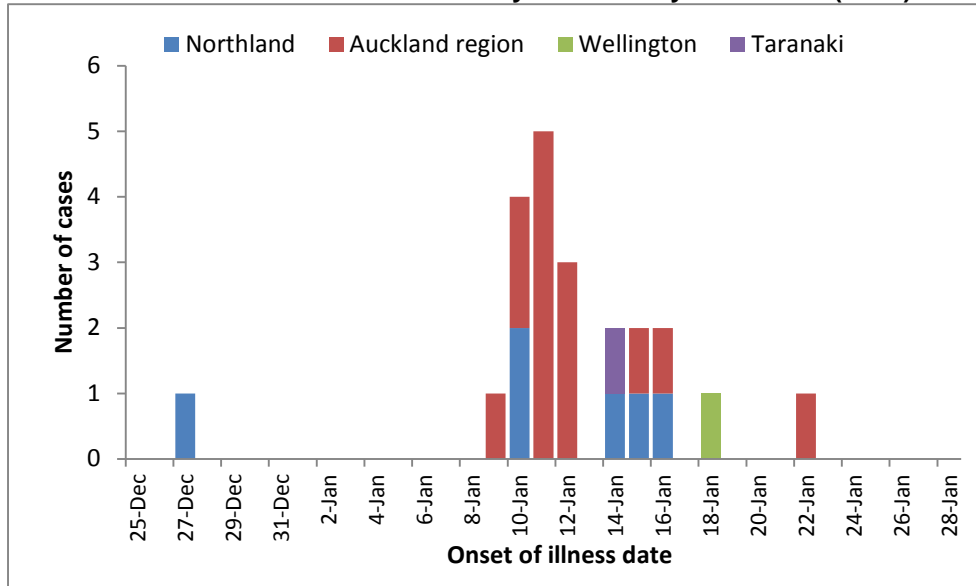


# New Zealand Public Health Surveillance Report Volume 13 Issue 3

## Supplementary material

### Outbreak of *Salmonella* Thompson linked to Northland food premises

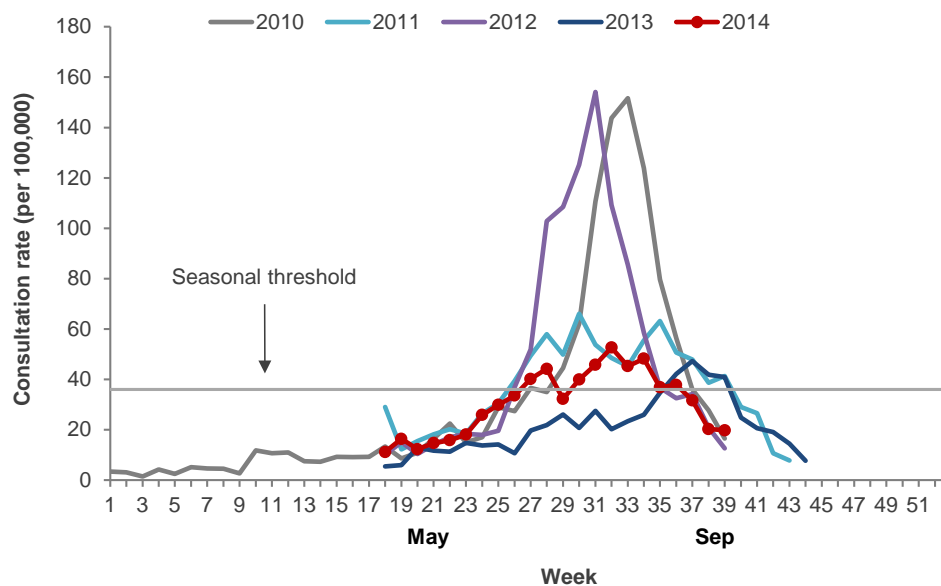
Epidemic curve of *Salmonella* Thompson and *Salmonella* enterica subsp. enterica (I) ser. 6,7 : k : - cases linked to the Northland bakery outbreak by onset date (n=22)



Note: The onset date for four cases is unknown. The onset date for the food handler is not known as no symptoms were reported. Auckland region includes Waitemata, Auckland, and Counties Manukau DHBs.

### Influenza surveillance, 2014

#### Weekly consultation rates for influenza-like illness in New Zealand, 2010–2014



2015 influenza vaccine components were:

A(H1N1) an A/California/7/2009 (H1N1)pdm-like virus\*

A(H3N2) an A/Switzerland/9715293/2013 (H3N2)-like virus

B a B/Phuket/3073/2013-like virus

\* Note: The A/California/7/2009 (H1N1)-like strain is an influenza A(H1N1)pdm09 strain.