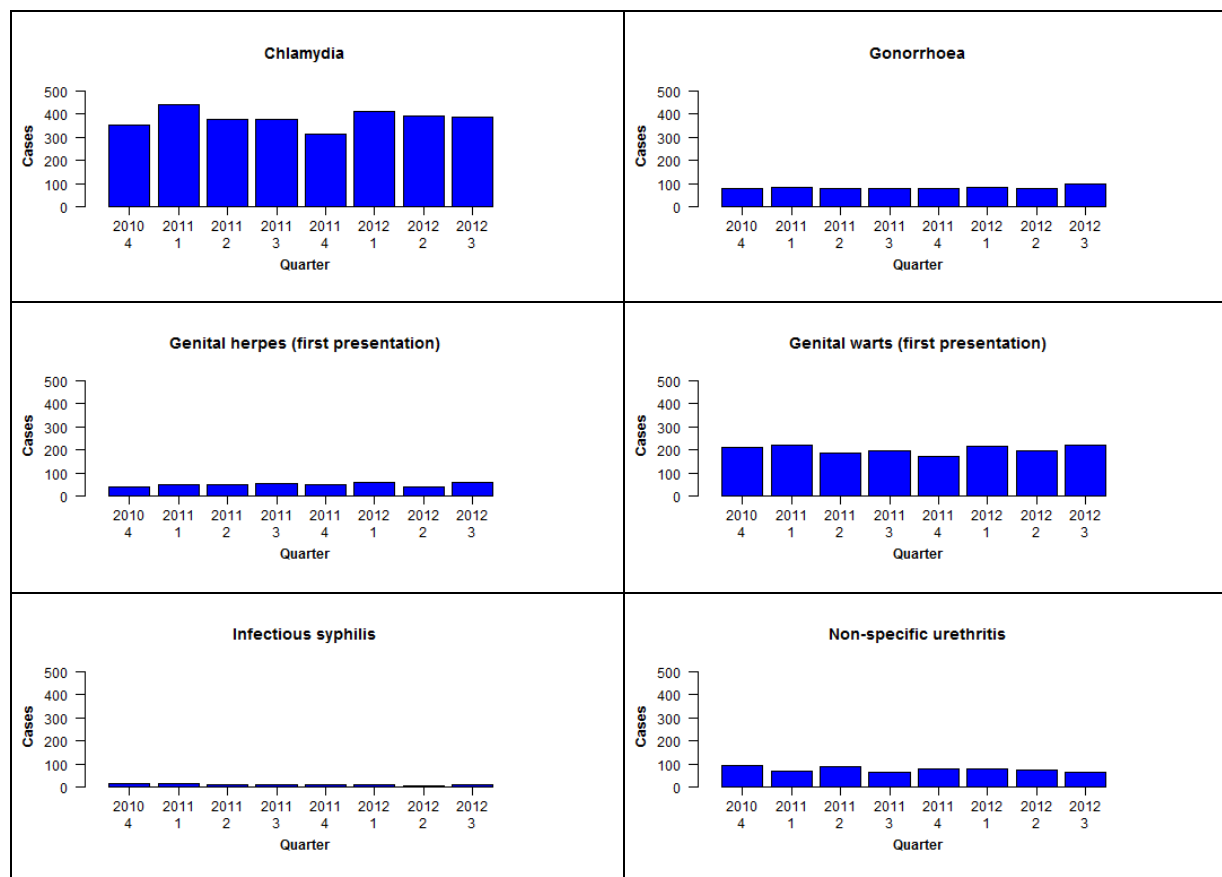


## AUCKLAND REGION

Clinics in Auckland, Counties Manukau and Waitemata DHBs

### Sexual health clinic (SHC) surveillance of STIs: July-September 2012

Quarterly case counts in participating SHCs by disease, October 2010 to September 2012



No cases of chancroid, granuloma inguinale or lymphogranuloma venereum were reported during the last quarter

Quarterly case counts in participating SHCs by disease, October 2010 to September 2012

	Q4 2010	Q1 2011	Q2 2011	Q3 2011	Q4 2011	Q1 2012	Q2 2012	Q3 2012
Chlamydia	350	438	379	375	313	409	393	388
Gonorrhoea	80	82	78	78	79	81	79	98
Genital herpes (first presentation)	39	47	49	53	49	59	41	61
Genital warts (first presentation)	210	222	187	198	172	213	196	219
Infectious syphilis	13	14	11	9	10	11	4	11
Non-specific urethritis	94	68	86	66	79	80	73	65