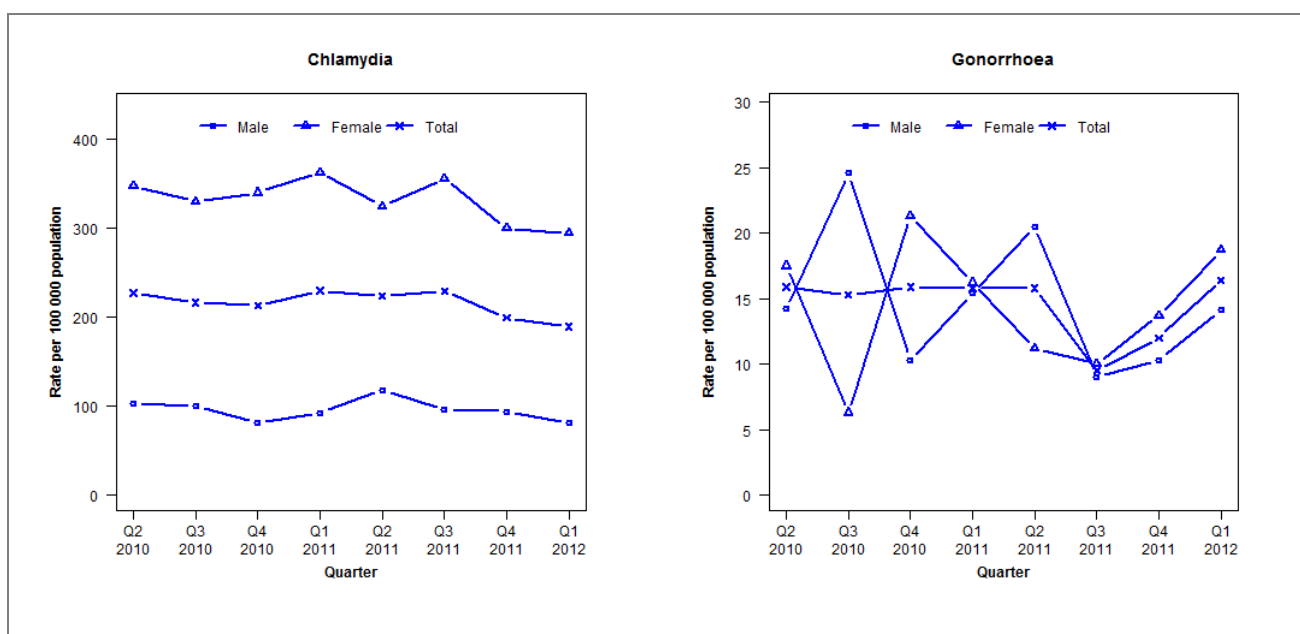


## Laboratory surveillance of chlamydia and gonorrhoea: January-March 2012

Quarterly chlamydia and gonorrhoea rates (female, male and total population), April 2010 to March 2012



Denominator = Statistics New Zealand mid-year population estimates

### Number of lab confirmed chlamydia cases (female, male and total population) and number of tests per 100 000 population, April 2010 to March 2012

	Q2 2010	Q3 2010	Q4 2010	Q1 2011	Q2 2011	Q3 2011	Q4 2011	Q1 2012
<b>Number of lab-confirmed cases<sup>1</sup></b>	357	340	334	363	353	362	315	299
<i>Female</i>	277	263	271	290	260	285	240	236
<i>Male</i>	80	77	63	72	92	75	73	63
<b>Tests per 100 000 population<sup>2</sup></b>	1885	1932	1858	1921	1969	1877	1808	1664

<sup>1</sup> Total includes cases where sex is not reported

<sup>2</sup> Denominator = Statistics New Zealand mid-year population estimates

### Number of lab confirmed gonorrhoea cases (female, male and total population) and number of tests per 100 000 population, April 2010 to March 2012

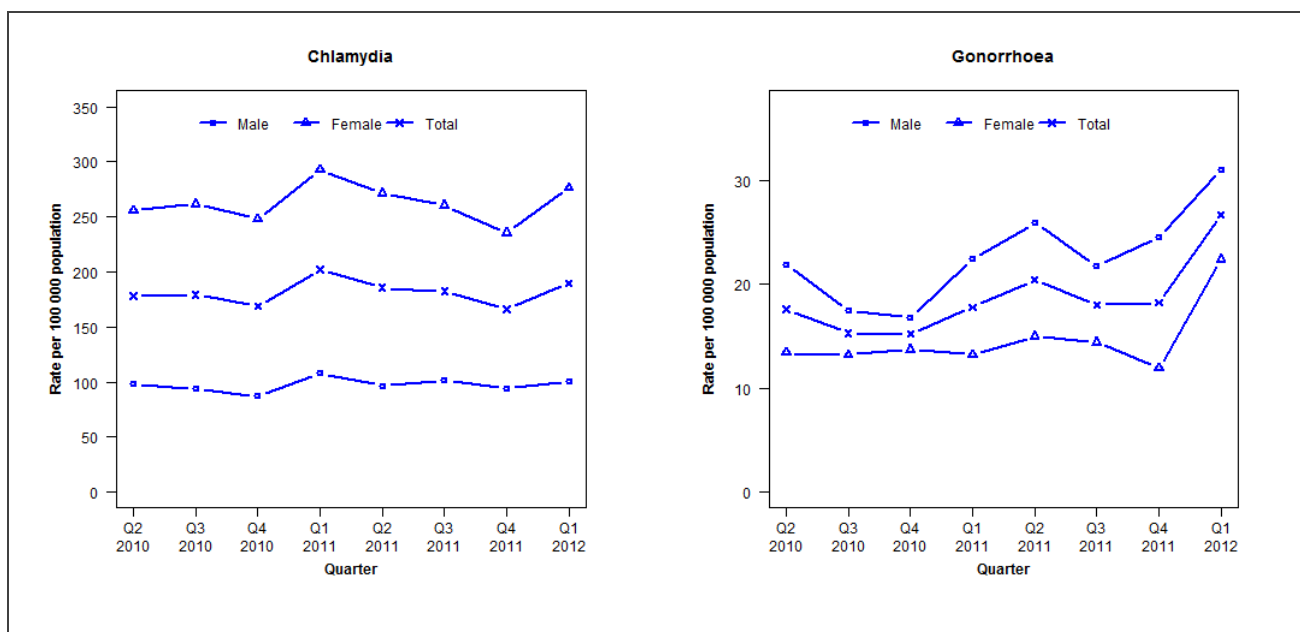
	Q2 2010	Q3 2010	Q4 2010	Q1 2011	Q2 2011	Q3 2011	Q4 2011	Q1 2012
<b>Number of lab-confirmed cases<sup>1</sup></b>	25	24	25	25	25	15	19	26
<i>Female</i>	14	5	17	13	9	8	11	15
<i>Male</i>	11	19	8	12	16	7	8	11
<b>Tests per 100 000 population<sup>2</sup></b>	2405	2692	2703	2501	2732	2923	2811	2878

<sup>1</sup> Total includes cases where sex is not reported

<sup>2</sup> Denominator = Statistics New Zealand mid-year population estimates

## Laboratory surveillance of chlamydia and gonorrhoea: January-March 2012

Quarterly chlamydia and gonorrhoea rates (female, male and total population), April 2010 to March 2012



Denominator = Statistics New Zealand mid-year population estimates

Note: NAAT for gonorrhoea testing introduced by Labtests in March 2012

## Number of lab confirmed chlamydia cases (female, male and total population) and number of tests per 100 000 population, April 2010 to March 2012

	Q2 2010	Q3 2010	Q4 2010	Q1 2011	Q2 2011	Q3 2011	Q4 2011	Q1 2012
<b>Number of lab-confirmed cases<sup>1</sup></b>	2635	2652	2498	3036	2789	2738	2499	2853
<b>Female</b>	1922	1968	1865	2238	2074	1991	1800	2113
<b>Male</b>	711	681	632	795	714	747	696	739
<b>Tests per 100 000 population<sup>2</sup></b>	2444	2470	2270	2476	2470	2486	2336	2550

<sup>1</sup>Total includes cases where sex is not reported<sup>2</sup>Denominator = Statistics New Zealand mid-year population estimates

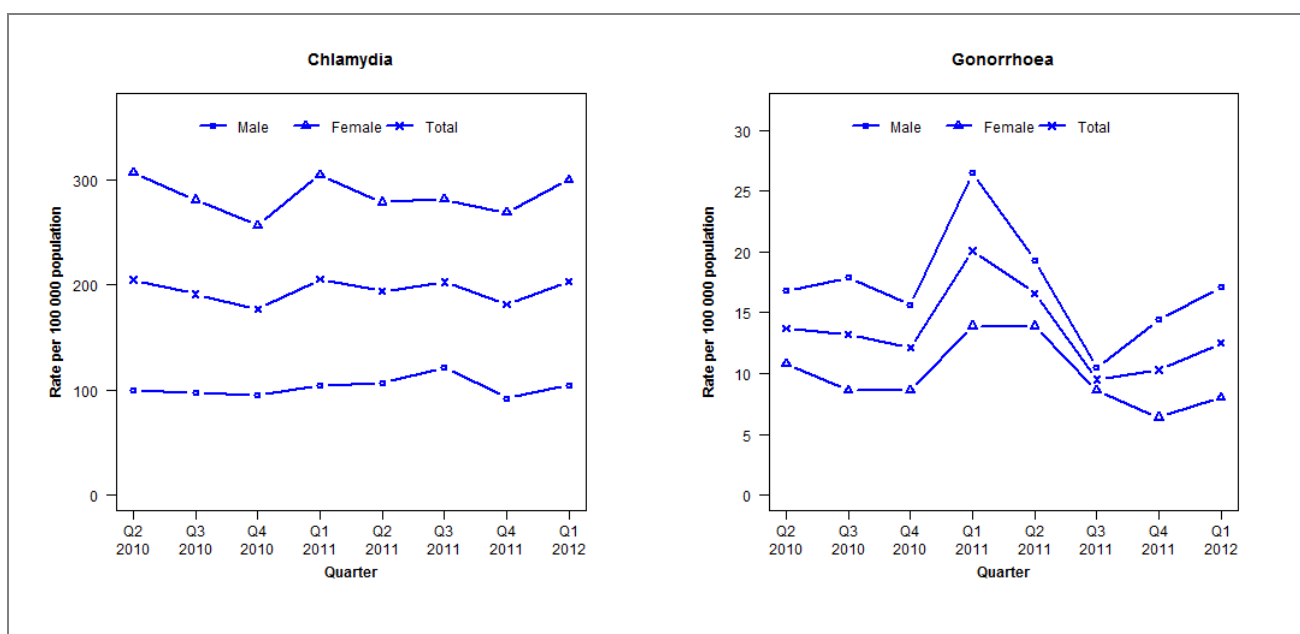
## Number of lab confirmed gonorrhoea cases (female, male and total population) and number of tests per 100 000 population, April 2010 to March 2012

	Q2 2010	Q3 2010	Q4 2010	Q1 2011	Q2 2011	Q3 2011	Q4 2011	Q1 2012
<b>Number of lab-confirmed cases<sup>1</sup></b>	260	226	225	267	306	271	273	401
<b>Female</b>	101	99	103	101	115	110	91	171
<b>Male</b>	159	127	122	165	191	161	181	229
<b>Tests per 100 000 population<sup>2</sup></b>	3435	3443	3257	3451	3746	3811	3702	3977

<sup>1</sup>Total includes cases where sex is not reported<sup>2</sup>Denominator = Statistics New Zealand mid-year population estimates

## Laboratory surveillance of chlamydia and gonorrhoea: January-March 2012

Quarterly chlamydia and gonorrhoea rates (female, male and total population), April 2010 to March 2012



Denominator = Statistics New Zealand mid-year population estimates

### Number of lab confirmed chlamydia cases (female, male and total population) and number of tests per 100 000 population, April 2010 to March 2012

	Q2 2010	Q3 2010	Q4 2010	Q1 2011	Q2 2011	Q3 2011	Q4 2011	Q1 2012
<b>Number of lab-confirmed cases<sup>1</sup></b>	747	697	645	756	713	746	668	748
<i>Female</i>	568	520	475	568	520	525	501	559
<i>Male</i>	179	175	170	188	193	220	167	189
<b>Tests per 100 000 population<sup>2</sup></b>	2035	2032	1911	2022	2023	2121	1894	2053

<sup>1</sup>Total includes cases where sex is not reported

<sup>2</sup>Denominator = Statistics New Zealand mid-year population estimates

### Number of lab confirmed gonorrhoea cases (female, male and total population) and number of tests per 100 000 population, April 2010 to March 2012

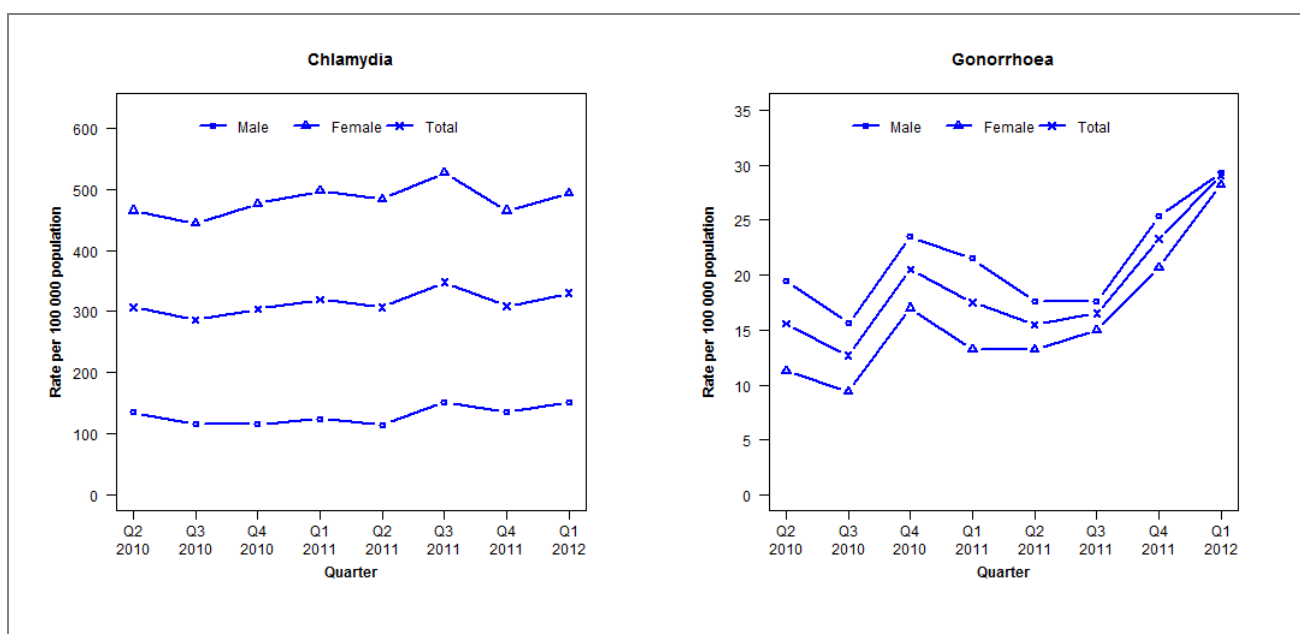
	Q2 2010	Q3 2010	Q4 2010	Q1 2011	Q2 2011	Q3 2011	Q4 2011	Q1 2012
<b>Number of lab-confirmed cases<sup>1</sup></b>	50	48	44	74	61	35	38	46
<i>Female</i>	20	16	16	26	26	16	12	15
<i>Male</i>	30	32	28	48	35	19	26	31
<b>Tests per 100 000 population<sup>2</sup></b>	1865	1874	1804	1873	1748	1850	1684	1848

<sup>1</sup>Total includes cases where sex is not reported

<sup>2</sup>Denominator = Statistics New Zealand mid-year population estimates

## Laboratory surveillance of chlamydia and gonorrhoea: January-March 2012

Quarterly chlamydia and gonorrhoea rates (female, male and total population), April 2010 to March 2012



Denominator = Statistics New Zealand mid-year population estimates

### Number of lab confirmed chlamydia cases (female, male and total population) and number of tests per 100 000 population, April 2010 to March 2012

	Q2 2010	Q3 2010	Q4 2010	Q1 2011	Q2 2011	Q3 2011	Q4 2011	Q1 2012
<b>Number of lab-confirmed cases<sup>1</sup></b>	315	294	312	329	316	358	318	340
<i>Female</i>	246	235	252	264	257	280	247	262
<i>Male</i>	69	59	59	64	59	78	70	78
<b>Tests per 100 000 population<sup>2</sup></b>	2510	2577	2558	2751	2649	2791	2573	2904

<sup>1</sup> Total includes cases where sex is not reported

<sup>2</sup> Denominator = Statistics New Zealand mid-year population estimates

### Number of lab confirmed gonorrhoea cases (female, male and total population) and number of tests per 100 000 population, April 2010 to March 2012

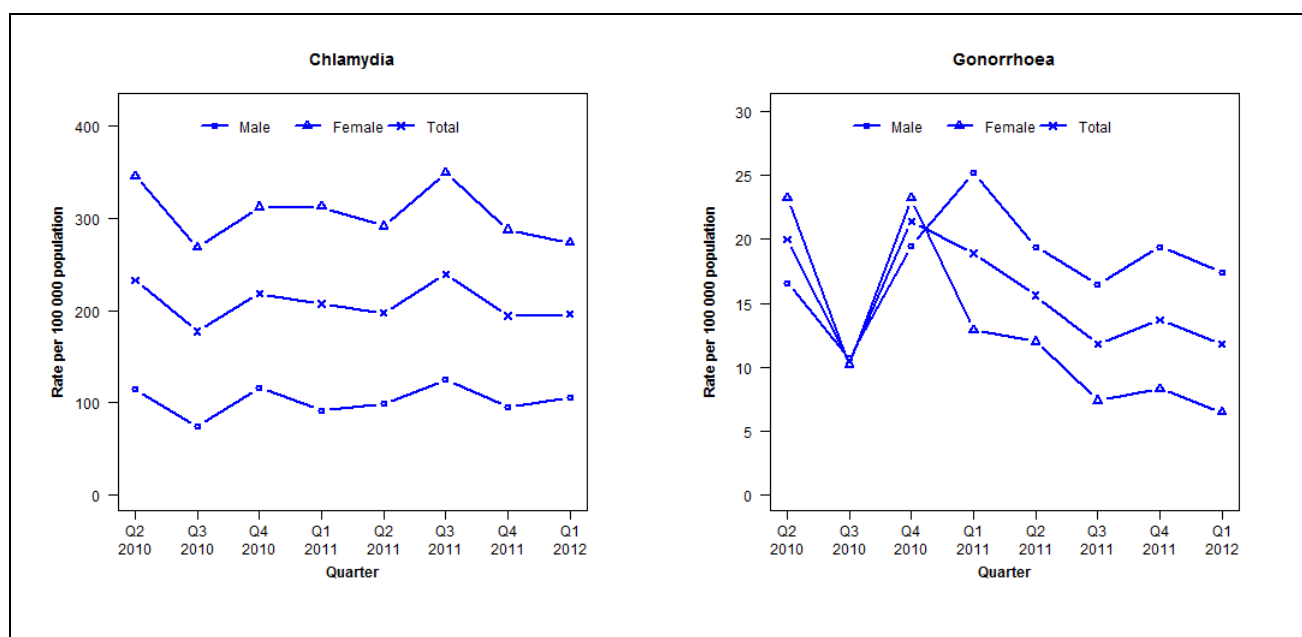
	Q2 2010	Q3 2010	Q4 2010	Q1 2011	Q2 2011	Q3 2011	Q4 2011	Q1 2012
<b>Number of lab-confirmed cases<sup>1</sup></b>	16	13	21	18	16	17	24	30
<i>Female</i>	6	5	9	7	7	8	11	15
<i>Male</i>	10	8	12	11	9	9	13	15
<b>Tests per 100 000 population<sup>2</sup></b>	1881	1938	1850	1848	1774	1700	2053	2356

<sup>1</sup> Total includes cases where sex is not reported

<sup>2</sup> Denominator = Statistics New Zealand mid-year population estimates

## Laboratory surveillance of chlamydia and gonorrhoea: January-March 2012

Quarterly chlamydia and gonorrhoea rates (female, male and total population), April 2010 to March 2012



Denominator = Statistics New Zealand mid-year population estimates

## Number of lab confirmed chlamydia cases (female, male and total population) and number of tests per 100 000 population, April 2010 to March 2012

	Q2 2010	Q3 2010	Q4 2010	Q1 2011	Q2 2011	Q3 2011	Q4 2011	Q1 2012
<b>Number of lab-confirmed cases<sup>1</sup></b>	489	373	459	439	418	508	412	416
<i>Female</i>	372	289	336	339	316	379	312	297
<i>Male</i>	117	76	119	95	102	129	98	109
<b>Tests per 100 000 population<sup>2</sup></b>	2163	2043	2023	2093	2087	2166	1991	2153

<sup>1</sup>Total includes cases where sex is not reported<sup>2</sup>Denominator = Statistics New Zealand mid-year population estimates

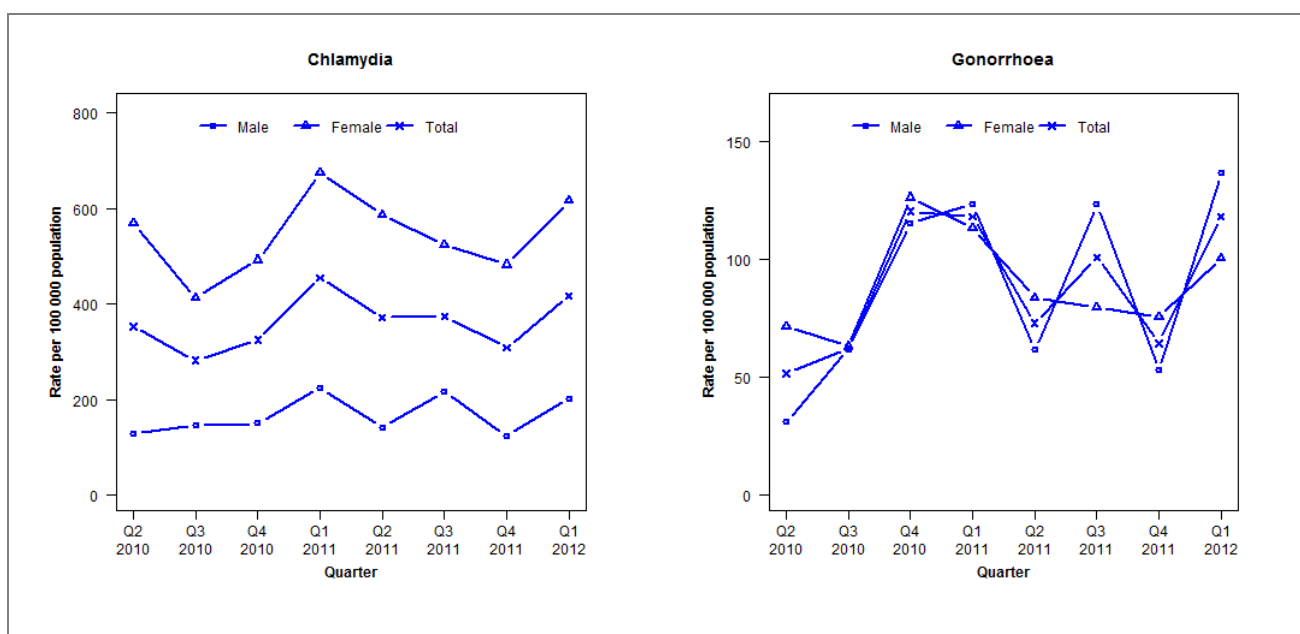
## Number of lab confirmed gonorrhoea cases (female, male and total population) and number of tests per 100 000 population, April 2010 to March 2012

	Q2 2010	Q3 2010	Q4 2010	Q1 2011	Q2 2011	Q3 2011	Q4 2011	Q1 2012
<b>Number of lab-confirmed cases<sup>1</sup></b>	42	22	45	40	33	25	29	25
<i>Female</i>	25	11	25	14	13	8	9	7
<i>Male</i>	17	11	20	26	20	17	20	18
<b>Tests per 100 000 population<sup>2</sup></b>	1634	1586	1537	1457	1508	1532	1511	1597

<sup>1</sup>Total includes cases where sex is not reported<sup>2</sup>Denominator = Statistics New Zealand mid-year population estimates

## Laboratory surveillance of chlamydia and gonorrhoea: January-March 2012

Quarterly chlamydia and gonorrhoea rates (female, male and total population), April 2010 to March 2012



Denominator = Statistics New Zealand mid-year population estimates

### Number of lab confirmed chlamydia cases (female, male and total population) and number of tests per 100 000 population, April 2010 to March 2012

	Q2 2010	Q3 2010	Q4 2010	Q1 2011	Q2 2011	Q3 2011	Q4 2011	Q1 2012
<b>Number of lab-confirmed cases<sup>1</sup></b>	164	131	151	212	173	174	144	194
<i>Female</i>	135	98	117	161	140	125	115	147
<i>Male</i>	29	33	34	51	32	49	28	46
<b>Tests per 100 000 population<sup>2</sup></b>	2568	2703	2406	2687	2792	2766	2373	2584

<sup>1</sup> Total includes cases where sex is not reported

<sup>2</sup> Denominator = Statistics New Zealand mid-year population estimates

### Number of lab confirmed gonorrhoea cases (female, male and total population) and number of tests per 100 000 population, April 2010 to March 2012

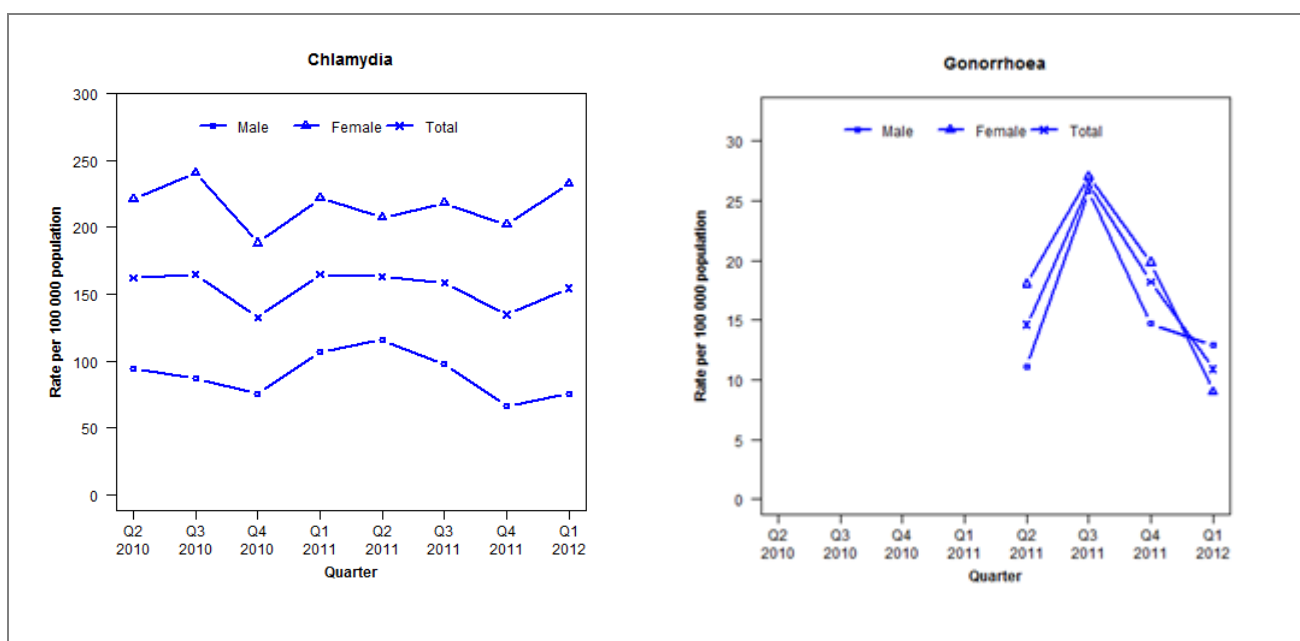
	Q2 2010	Q3 2010	Q4 2010	Q1 2011	Q2 2011	Q3 2011	Q4 2011	Q1 2012
<b>Number of lab-confirmed cases<sup>1</sup></b>	24	29	56	55	34	47	30	55
<i>Female</i>	17	15	30	27	20	19	18	24
<i>Male</i>	7	14	26	28	14	28	12	31
<b>Tests per 100 000 population<sup>2</sup></b>	2092	2260	2138	2356	2575	2438	2152	2275

<sup>1</sup> Total includes cases where sex is not reported

<sup>2</sup> Denominator = Statistics New Zealand mid-year population estimates

## Laboratory surveillance of chlamydia and gonorrhoea: January-March 2012

Quarterly chlamydia and gonorrhoea rates (female, male and total population), April 2010 to March 2012



Denominator = Statistics New Zealand mid-year population estimates

Note: Taranaki Base Hospital laboratory began contributing gonorrhoea data during 2011

Gonorrhoea rates are not presented for Q2 2010 to Q1 2011 as there are fewer than five cases in a quarter

### Number of lab confirmed chlamydia cases (female, male and total population) and number of tests per 100 000 population, April 2010 to March 2012

	Q2 2010	Q3 2010	Q4 2010	Q1 2011	Q2 2011	Q3 2011	Q4 2011	Q1 2012
<b>Number of lab-confirmed cases<sup>1</sup></b>	177	180	145	181	179	174	148	170
<i>Female</i>	122	133	104	123	115	121	112	129
<i>Male</i>	51	47	41	58	63	53	36	41
<b>Tests per 100 000 population</b>	2256	2145	2086	2379	2188	2287	2165	2267

<sup>1</sup> Total includes cases where sex is not reported

<sup>2</sup> Denominator = Statistics New Zealand mid-year population estimates

### Number of lab confirmed gonorrhoea cases (female, male and total population) and number of tests per 100 000 population, April 2010 to March 2012

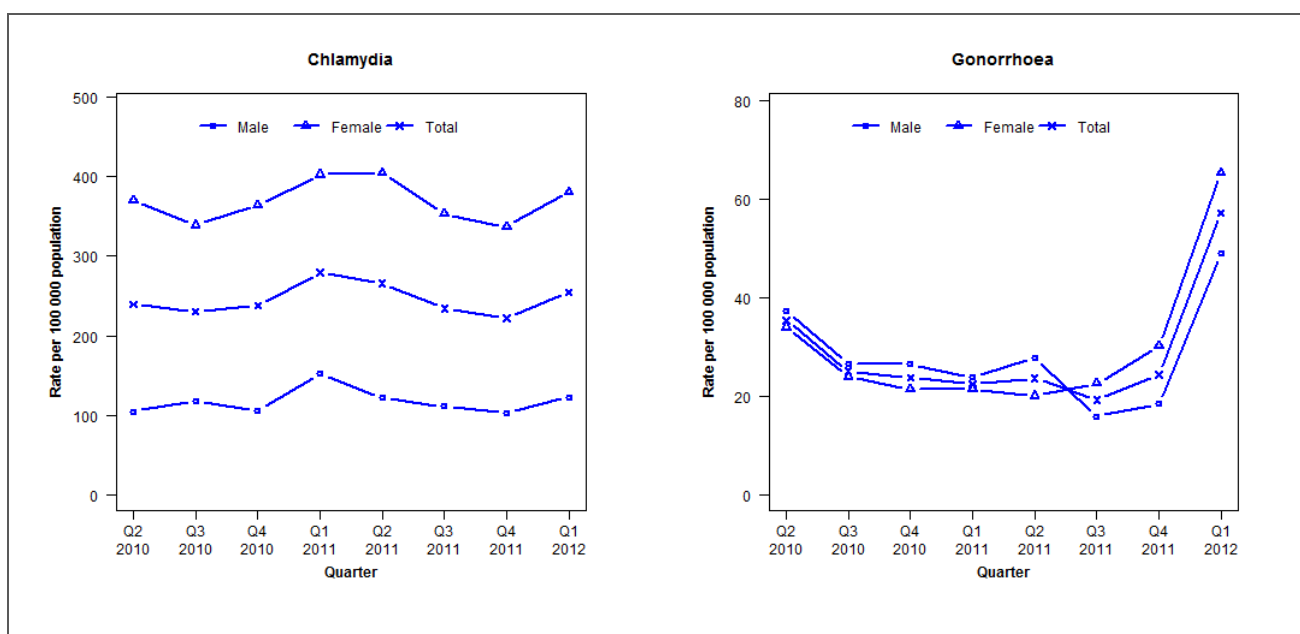
	Q2 2010	Q3 2010	Q4 2010	Q1 2011	Q2 2011	Q3 2011	Q4 2011	Q1 2012
<b>Number of lab-confirmed cases<sup>1</sup></b>	6	7	4	10	16	29	20	12
<i>Female</i>	3	5	1	7	10	15	11	5
<i>Male</i>	3	2	3	3	6	14	8	7
<b>Tests per 100 000 population</b>	1928	1881	1745	1908	2466	2598	2448	2552

<sup>1</sup> Total includes cases where sex is not reported

<sup>2</sup> Denominator = Statistics New Zealand mid-year population estimates

## Laboratory surveillance of chlamydia and gonorrhoea: January-March 2012

Quarterly chlamydia and gonorrhoea rates (female, male and total population), April 2010 to March 2012



Denominator = Statistics New Zealand mid-year population estimates

Note: NAAT for gonorrhoea testing introduced during Q4 2011

## Number of lab confirmed chlamydia cases (female, male and total population) and number of tests per 100 000 population, April 2010 to March 2012

	Q2 2010	Q3 2010	Q4 2010	Q1 2011	Q2 2011	Q3 2011	Q4 2011	Q1 2012
<b>Number of lab-confirmed cases<sup>1</sup></b>	372	358	369	435	414	365	346	396
<i>Female</i>	293	269	289	320	322	281	268	303
<i>Male</i>	79	89	80	115	92	84	78	93
<b>Tests per 100 000 population<sup>2</sup></b>	2104	2128	1944	2123	2164	2046	1807	1992

<sup>1</sup>Total includes cases where sex is not reported<sup>2</sup>Denominator = Statistics New Zealand mid-year population estimates

## Number of lab confirmed gonorrhoea cases (female, male and total population) and number of tests per 100 000 population, April 2010 to March 2012

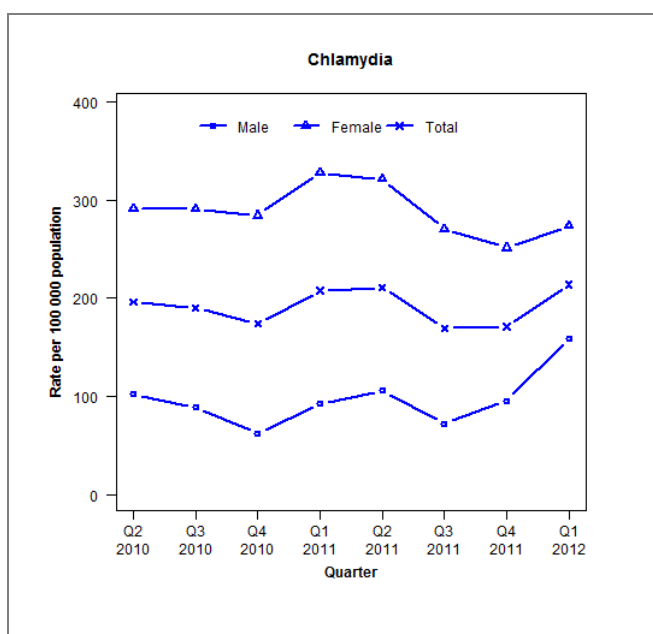
	Q2 2010	Q3 2010	Q4 2010	Q1 2011	Q2 2011	Q3 2011	Q4 2011	Q1 2012
<b>Number of lab-confirmed cases<sup>1</sup></b>	55	39	37	35	37	30	38	89
<i>Female</i>	27	19	17	17	16	18	24	52
<i>Male</i>	28	20	20	18	21	12	14	37
<b>Tests per 100 000 population<sup>2</sup></b>	979	676	672	698	856	796	1912	1992

<sup>1</sup>Total includes cases where sex is not reported<sup>2</sup>Denominator = Statistics New Zealand mid-year population estimates



## Laboratory surveillance of chlamydia and gonorrhoea: January-March 2012

Quarterly chlamydia rates (female, male and total population), April 2010 to March 2012



Denominator = Statistics New Zealand mid-year population estimates

Note: Gonorrhoea rates are not presented when there are fewer than five cases in a quarter.

### Number of lab confirmed chlamydia cases (female, male and total population) and number of tests per 100 000 population, April 2010 to March 2012

	Q2 2010	Q3 2010	Q4 2010	Q1 2011	Q2 2011	Q3 2011	Q4 2011	Q1 2012
<b>Number of lab-confirmed cases<sup>1</sup></b>	124	120	110	131	133	107	108	135
<i>Female</i>	92	92	90	103	101	85	79	86
<i>Male</i>	31	27	19	28	32	22	29	48
<b>Tests per 100 000 population<sup>2</sup></b>	1633	1697	1556	1666	1715	1736	1574	1720

<sup>1</sup> Total includes cases where sex is not reported

<sup>2</sup> Denominator = Statistics New Zealand mid-year population estimates

### Number of lab confirmed gonorrhoea cases (female, male and total population) and number of tests per 100 000 population, April 2010 to March 2012

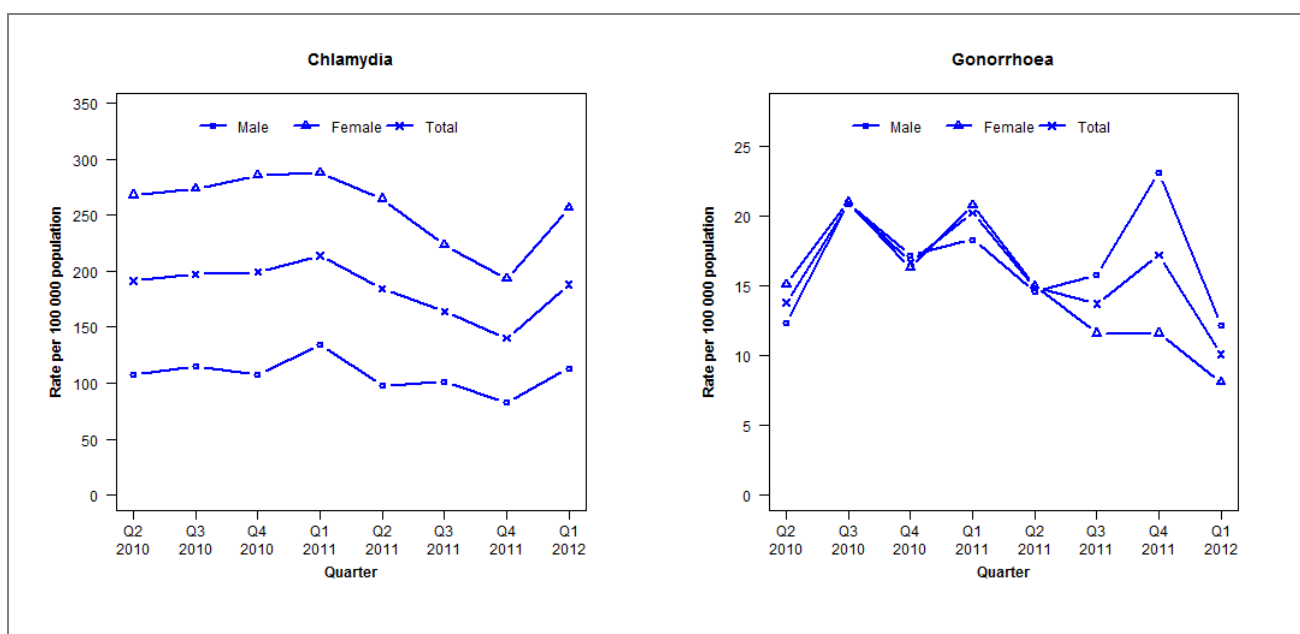
	Q2 2010	Q3 2010	Q4 2010	Q1 2011	Q2 2011	Q3 2011	Q4 2011	Q1 2012
<b>Number of lab-confirmed cases<sup>1</sup></b>	11	8	9	9	13	7	15	12
<i>Female</i>	2	1	4	1	7	2	5	4
<i>Male</i>	9	7	5	8	6	5	10	8
<b>Tests per 100 000 population<sup>2</sup></b>	970	972	1102	997	1045	1140	1048	1043

<sup>1</sup> Total includes cases where sex is not reported

<sup>2</sup> Denominator = Statistics New Zealand mid-year population estimates

## Laboratory surveillance of chlamydia and gonorrhoea: January-March 2012

Quarterly chlamydia and gonorrhoea rates (female, male and total population), April 2010 to March 2012



Denominator = Statistics New Zealand mid-year population estimates

### Number of lab confirmed chlamydia cases (female, male and total population) and number of tests per 100 000 population, April 2010 to March 2012

	Q2 2010	Q3 2010	Q4 2010	Q1 2011	Q2 2011	Q3 2011	Q4 2011	Q1 2012
<b>Number of lab-confirmed cases<sup>1</sup></b>	320	330	333	360	310	276	236	317
<i>Female</i>	230	235	245	249	229	193	167	222
<i>Male</i>	88	94	88	110	80	83	68	93
<b>Tests per 100 000 population<sup>2</sup></b>	1765	1813	1693	1727	1779	1734	1607	1739

<sup>1</sup> Total includes cases where sex is not reported

<sup>2</sup> Denominator = Statistics New Zealand mid-year population estimates

### Number of lab confirmed gonorrhoea cases (female, male and total population) and number of tests per 100 000 population, April 2010 to March 2012

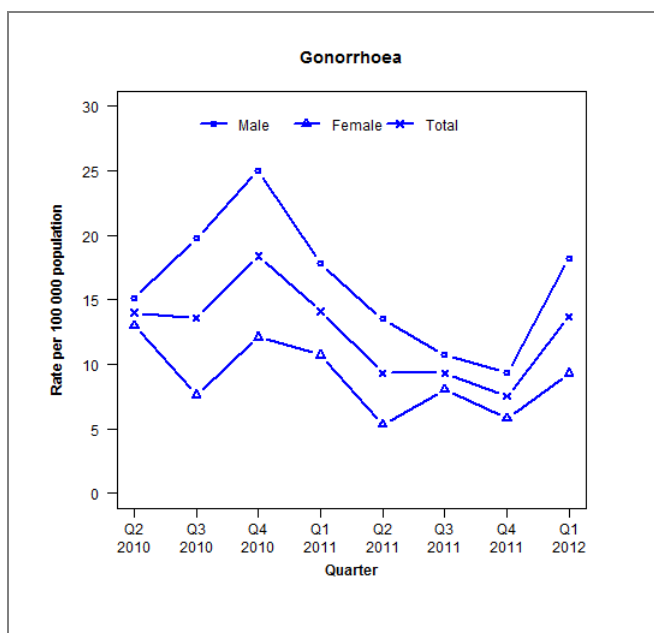
	Q2 2010	Q3 2010	Q4 2010	Q1 2011	Q2 2011	Q3 2011	Q4 2011	Q1 2012
<b>Number of lab-confirmed cases<sup>1</sup></b>	23	35	28	34	25	23	29	17
<i>Female</i>	13	18	14	18	13	10	10	7
<i>Male</i>	10	17	14	15	12	13	19	10
<b>Tests per 100 000 population<sup>2</sup></b>	1488	1537	1446	1508	1604	1500	1426	1509

<sup>1</sup> Total includes cases where sex is not reported

<sup>2</sup> Denominator = Statistics New Zealand mid-year population estimates

## Laboratory surveillance of gonorrhoea: January-March 2012

Quarterly gonorrhoea rates (female, male and total population), April 2010 to March 2012



Denominator = Statistics New Zealand mid-year population estimates

Note: Chlamydia data not available for Wellington region

## Number of lab confirmed gonorrhoea cases (female, male and total population) and number of tests per 100 000 population, April 2010 to March 2012

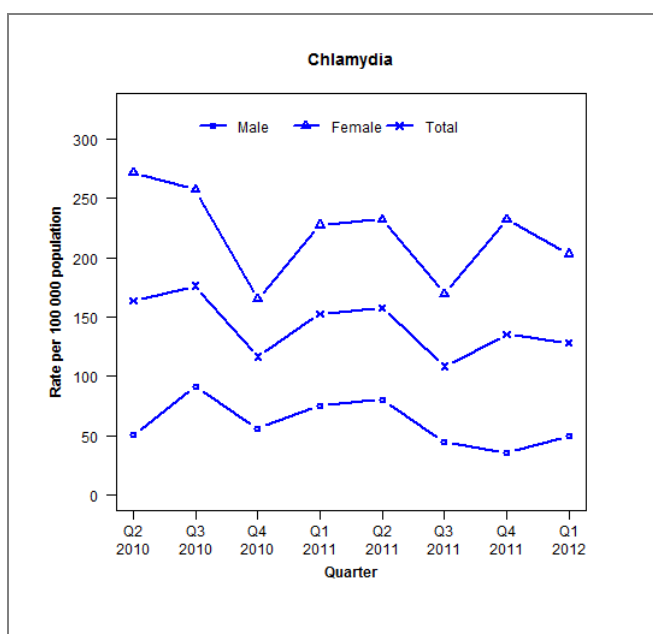
	Q2 2010	Q3 2010	Q4 2010	Q1 2011	Q2 2011	Q3 2011	Q4 2011	Q1 2012
<b>Number of lab-confirmed cases<sup>1</sup></b>	61	59	80	62	41	41	33	60
<i>Female</i>	29	17	27	24	12	18	13	21
<i>Male</i>	32	42	53	38	29	23	20	39
<b>Tests per 100 000 population<sup>2</sup></b>	1653	1699	1545	1621	1681	1723	1587	1765

<sup>1</sup> Total includes cases where sex is not reported

<sup>2</sup> Denominator = Statistics New Zealand mid-year population estimates

## Laboratory surveillance of chlamydia and gonorrhoea: January-March 2012

Quarterly chlamydia rates (female, male and total population), April 2010 to March 2012



Denominator = Statistics New Zealand mid-year population estimates

Note: Gonorrhoea rates are not presented when there are fewer than five cases in a quarter.

### Number of lab confirmed chlamydia cases (female, male and total population) and number of tests per 100 000 population, April 2010 to March 2012

	Q2 2010	Q3 2010	Q4 2010	Q1 2011	Q2 2011	Q3 2011	Q4 2011	Q1 2012
<b>Number of lab-confirmed cases<sup>1</sup></b>	66	71	47	62	64	44	55	52
<i>Female</i>	56	53	34	47	48	35	48	42
<i>Male</i>	10	18	11	15	16	9	7	10
<b>Tests per 100 000 population<sup>2</sup></b>	1442	1383	1331	1301	1486	1232	1272	1385

<sup>1</sup> Total includes cases where sex is not reported

<sup>2</sup> Denominator = Statistics New Zealand mid-year population estimates

### Number of lab confirmed gonorrhoea cases (female, male and total population) and number of tests per 100 000 population, April 2010 to March 2012

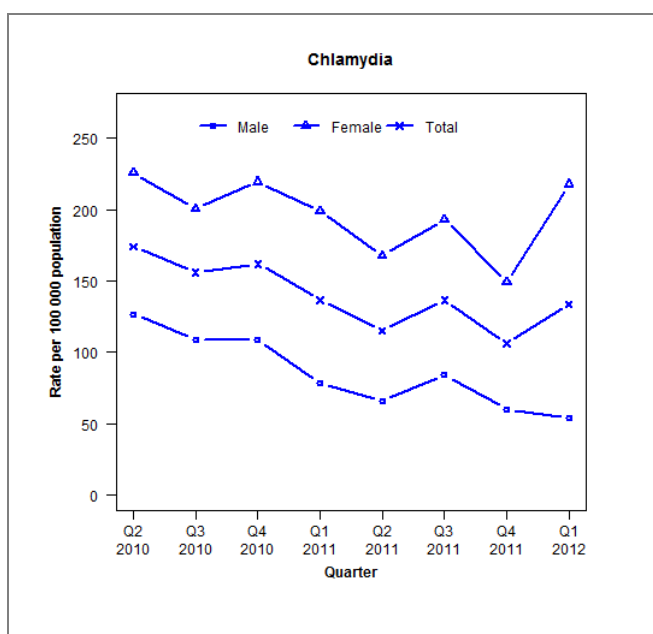
	Q2 2010	Q3 2010	Q4 2010	Q1 2011	Q2 2011	Q3 2011	Q4 2011	Q1 2012
<b>Number of lab-confirmed cases<sup>1</sup></b>	5	6	4	4	13	4	4	4
<i>Female</i>	3	3	3	1	8	1	4	3
<i>Male</i>	2	3	1	3	5	3	0	1
<b>Tests per 100 000 population<sup>2</sup></b>	1013	963	1025	996	1148	1037	1047	1079

<sup>1</sup> Total includes cases where sex is not reported

<sup>2</sup> Denominator = Statistics New Zealand mid-year population estimates

## Laboratory surveillance of chlamydia and gonorrhoea: January-March 2012

Quarterly chlamydia rates (female, male and total population), April 2010 to March 2012



Denominator = Statistics New Zealand mid-year population estimates

Note: Gonorrhoea rates are not presented when there are fewer than five cases in a quarter.

### Number of lab confirmed chlamydia cases (female, male and total population) and number of tests per 100 000 population, April 2010 to March 2012

	Q2 2010	Q3 2010	Q4 2010	Q1 2011	Q2 2011	Q3 2011	Q4 2011	Q1 2012
<b>Number of lab-confirmed cases<sup>1</sup></b>	57	51	53	45	38	45	35	44
<i>Female</i>	36	32	35	32	27	31	24	35
<i>Male</i>	21	18	18	13	11	14	10	9
<b>Tests per 100 000 population<sup>2</sup></b>	1708	1537	1412	1584	1675	1711	1356	1514

<sup>1</sup> Total includes cases where sex is not reported

<sup>2</sup> Denominator = Statistics New Zealand mid-year population estimates

### Number of lab confirmed gonorrhoea cases (female, male and total population) and number of tests per 100 000 population, April 2010 to March 2012

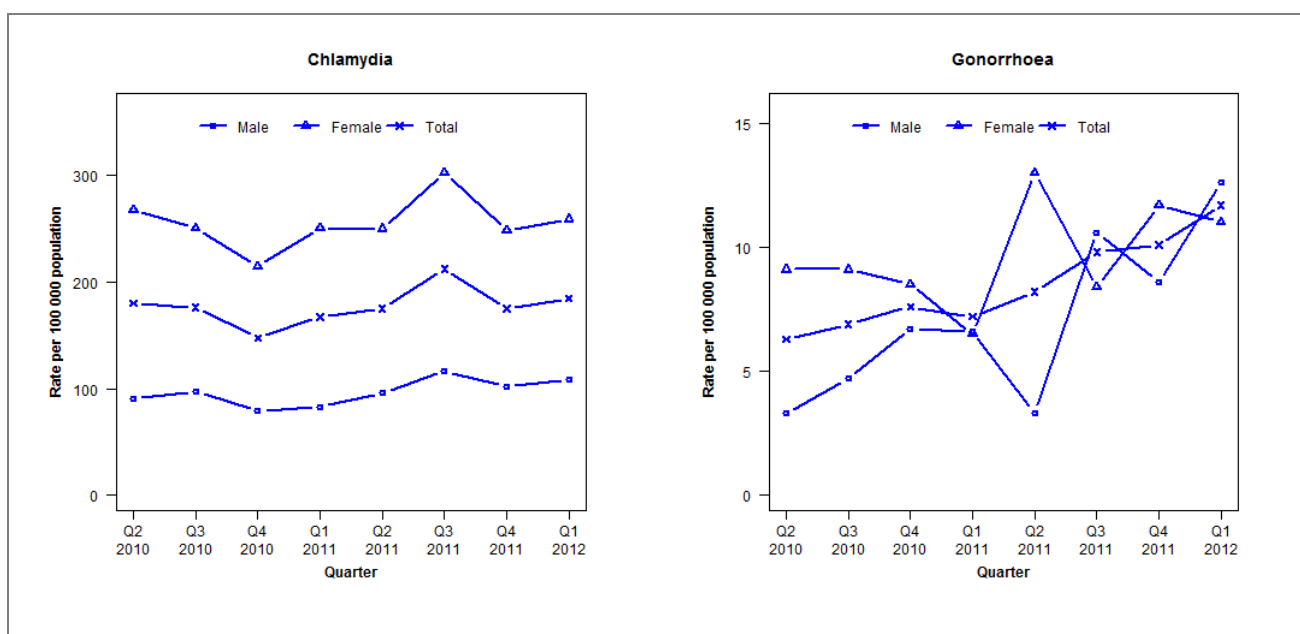
	Q2 2010	Q3 2010	Q4 2010	Q1 2011	Q2 2011	Q3 2011	Q4 2011	Q1 2012
<b>Number of lab-confirmed cases<sup>1</sup></b>	3	3	7	5	2	2	0	0
<i>Female</i>	1	2	3	3	2	0	0	0
<i>Male</i>	2	1	4	2	0	2	0	0
<b>Tests per 100 000 population<sup>2</sup></b>	2090	2172	1867	2008	1842	2203	1975	1960

<sup>1</sup> Total includes cases where sex is not reported

<sup>2</sup> Denominator = Statistics New Zealand mid-year population estimates

## Laboratory surveillance of chlamydia and gonorrhoea: January-March 2012

Quarterly chlamydia and gonorrhoea rates (female, male and total population), April 2010 to March 2012



Denominator = Statistics New Zealand mid-year population estimates

Note: PCR testing for gonorrhoea introduced in Q4 2011

### Number of lab confirmed chlamydia cases (female, male and total population) and number of tests per 100 000 population, April 2010 to March 2012

	Q2 2010	Q3 2010	Q4 2010	Q1 2011	Q2 2011	Q3 2011	Q4 2011	Q1 2012
<b>Number of lab-confirmed cases<sup>1</sup></b>	546	534	447	512	536	651	537	566
<i>Female</i>	410	384	328	387	386	467	383	400
<i>Male</i>	135	145	118	125	145	176	154	164
<b>Tests per 100 000 population<sup>2</sup></b>	2454	2484	2154	2290	2478	2434	2203	2364

<sup>1</sup> Total includes cases where sex is not reported

<sup>2</sup> Denominator = Statistics New Zealand mid-year population estimates

### Number of lab confirmed gonorrhoea cases (female, male and total population) and number of tests per 100 000 population, April 2010 to March 2012

	Q2 2010	Q3 2010	Q4 2010	Q1 2011	Q2 2011	Q3 2011	Q4 2011	Q1 2012
<b>Number of lab-confirmed cases<sup>1</sup></b>	19	21	23	22	25	30	31	36
<i>Female</i>	14	14	13	10	20	13	18	17
<i>Male</i>	5	7	10	10	5	16	13	19
<b>Tests per 100 000 population<sup>2</sup></b>	1351	1319	1141	1190	1357	1217	1873	2370

<sup>1</sup> Total includes cases where sex is not reported

<sup>2</sup> Denominator = Statistics New Zealand mid-year population estimates