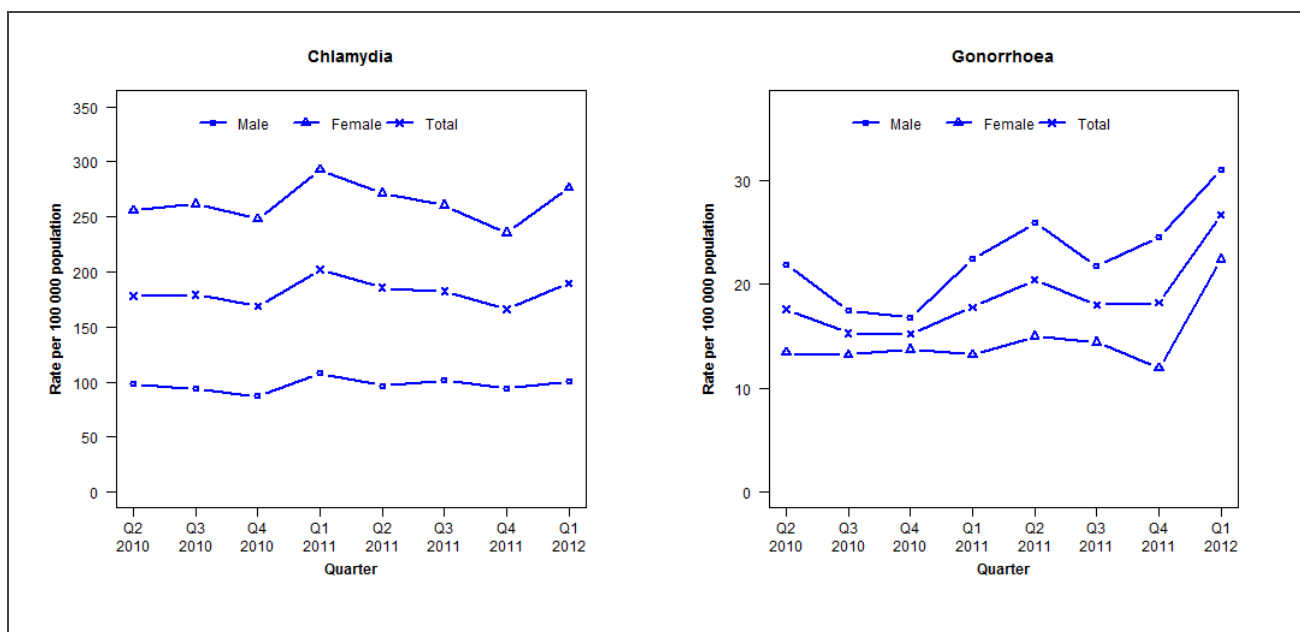


## Laboratory surveillance of chlamydia and gonorrhoea: January-March 2012

Quarterly chlamydia and gonorrhoea rates (female, male and total population), April 2010 to March 2012



Denominator = Statistics New Zealand mid-year population estimates

Note: NAAT for gonorrhoea testing introduced by Labtests in March 2012

## Number of lab confirmed chlamydia cases (female, male and total population) and number of tests per 100 000 population, April 2010 to March 2012

	Q2 2010	Q3 2010	Q4 2010	Q1 2011	Q2 2011	Q3 2011	Q4 2011	Q1 2012
<b>Number of lab-confirmed cases<sup>1</sup></b>	2635	2652	2498	3036	2789	2738	2499	2853
<i>Female</i>	1922	1968	1865	2238	2074	1991	1800	2113
<i>Male</i>	711	681	632	795	714	747	696	739
<b>Tests per 100 000 population<sup>2</sup></b>	2444	2470	2270	2476	2470	2486	2336	2550

<sup>1</sup>Total includes cases where sex is not reported<sup>2</sup>Denominator = Statistics New Zealand mid-year population estimates

## Number of lab confirmed gonorrhoea cases (female, male and total population) and number of tests per 100 000 population, April 2010 to March 2012

	Q2 2010	Q3 2010	Q4 2010	Q1 2011	Q2 2011	Q3 2011	Q4 2011	Q1 2012
<b>Number of lab-confirmed cases<sup>1</sup></b>	260	226	225	267	306	271	273	401
<i>Female</i>	101	99	103	101	115	110	91	171
<i>Male</i>	159	127	122	165	191	161	181	229
<b>Tests per 100 000 population<sup>2</sup></b>	3435	3443	3257	3451	3746	3811	3702	3977

<sup>1</sup>Total includes cases where sex is not reported<sup>2</sup>Denominator = Statistics New Zealand mid-year population estimates