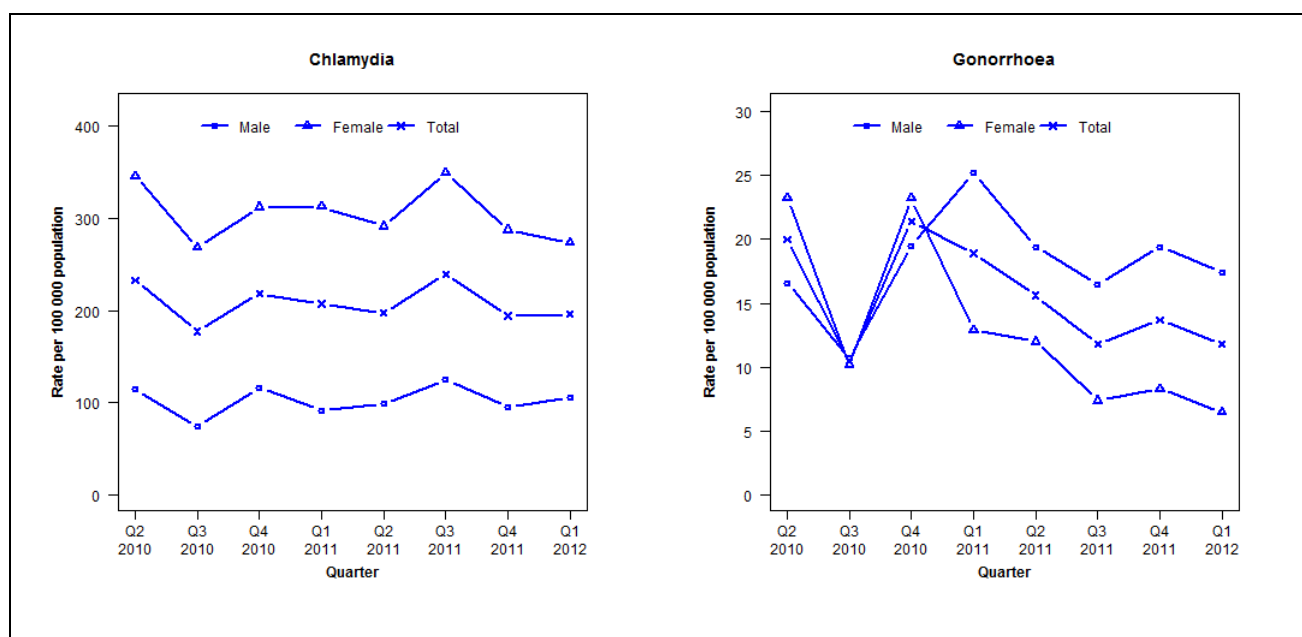


## Laboratory surveillance of chlamydia and gonorrhoea: January-March 2012

Quarterly chlamydia and gonorrhoea rates (female, male and total population), April 2010 to March 2012



Denominator = Statistics New Zealand mid-year population estimates

## Number of lab confirmed chlamydia cases (female, male and total population) and number of tests per 100 000 population, April 2010 to March 2012

	Q2 2010	Q3 2010	Q4 2010	Q1 2011	Q2 2011	Q3 2011	Q4 2011	Q1 2012
<b>Number of lab-confirmed cases<sup>1</sup></b>	489	373	459	439	418	508	412	416
<i>Female</i>	372	289	336	339	316	379	312	297
<i>Male</i>	117	76	119	95	102	129	98	109
<b>Tests per 100 000 population<sup>2</sup></b>	2163	2043	2023	2093	2087	2166	1991	2153

<sup>1</sup>Total includes cases where sex is not reported<sup>2</sup>Denominator = Statistics New Zealand mid-year population estimates

## Number of lab confirmed gonorrhoea cases (female, male and total population) and number of tests per 100 000 population, April 2010 to March 2012

	Q2 2010	Q3 2010	Q4 2010	Q1 2011	Q2 2011	Q3 2011	Q4 2011	Q1 2012
<b>Number of lab-confirmed cases<sup>1</sup></b>	42	22	45	40	33	25	29	25
<i>Female</i>	25	11	25	14	13	8	9	7
<i>Male</i>	17	11	20	26	20	17	20	18
<b>Tests per 100 000 population<sup>2</sup></b>	1634	1586	1537	1457	1508	1532	1511	1597

<sup>1</sup>Total includes cases where sex is not reported<sup>2</sup>Denominator = Statistics New Zealand mid-year population estimates