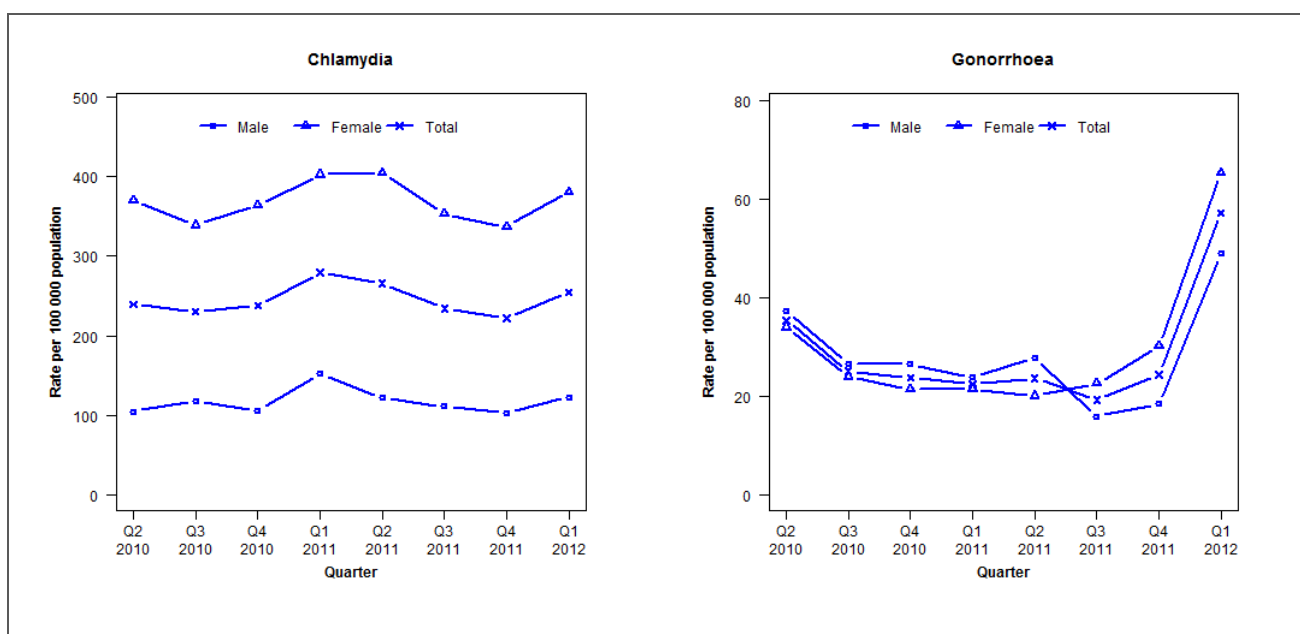


## Laboratory surveillance of chlamydia and gonorrhoea: January-March 2012

Quarterly chlamydia and gonorrhoea rates (female, male and total population), April 2010 to March 2012



Denominator = Statistics New Zealand mid-year population estimates

Note: NAAT for gonorrhoea testing introduced during Q4 2011

## Number of lab confirmed chlamydia cases (female, male and total population) and number of tests per 100 000 population, April 2010 to March 2012

	Q2 2010	Q3 2010	Q4 2010	Q1 2011	Q2 2011	Q3 2011	Q4 2011	Q1 2012
<b>Number of lab-confirmed cases<sup>1</sup></b>	372	358	369	435	414	365	346	396
<i>Female</i>	293	269	289	320	322	281	268	303
<i>Male</i>	79	89	80	115	92	84	78	93
<b>Tests per 100 000 population<sup>2</sup></b>	2104	2128	1944	2123	2164	2046	1807	1992

<sup>1</sup>Total includes cases where sex is not reported<sup>2</sup>Denominator = Statistics New Zealand mid-year population estimates

## Number of lab confirmed gonorrhoea cases (female, male and total population) and number of tests per 100 000 population, April 2010 to March 2012

	Q2 2010	Q3 2010	Q4 2010	Q1 2011	Q2 2011	Q3 2011	Q4 2011	Q1 2012
<b>Number of lab-confirmed cases<sup>1</sup></b>	55	39	37	35	37	30	38	89
<i>Female</i>	27	19	17	17	16	18	24	52
<i>Male</i>	28	20	20	18	21	12	14	37
<b>Tests per 100 000 population<sup>2</sup></b>	979	676	672	698	856	796	1912	1992

<sup>1</sup>Total includes cases where sex is not reported<sup>2</sup>Denominator = Statistics New Zealand mid-year population estimates