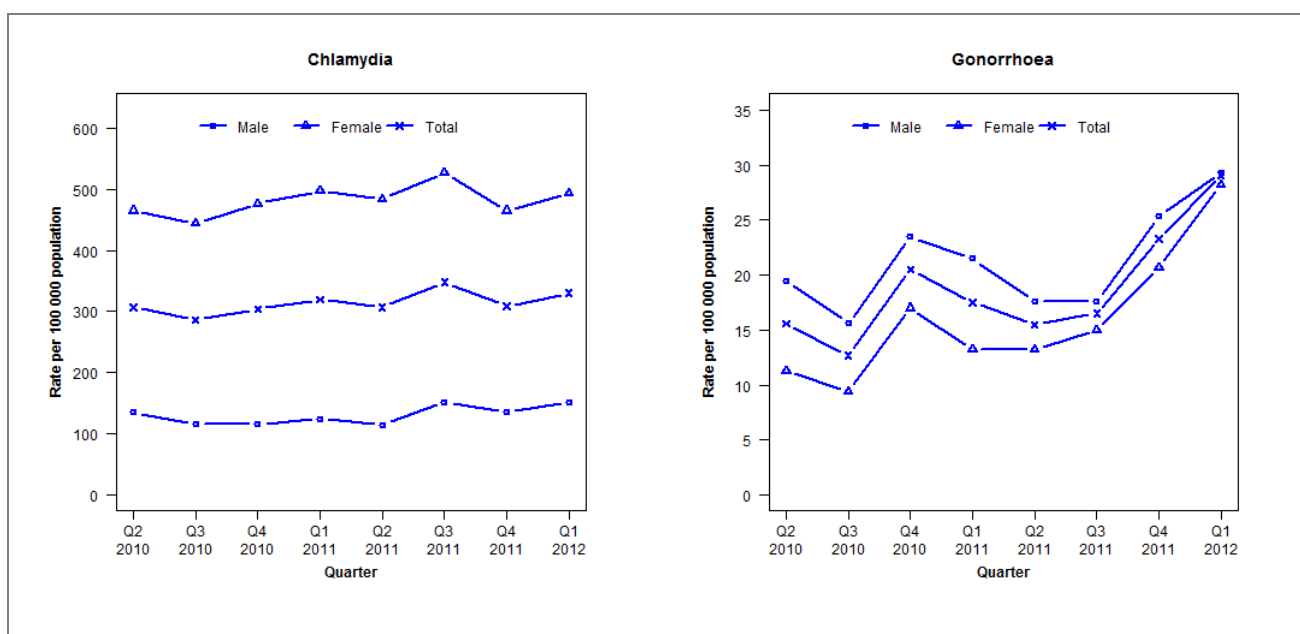


Laboratory surveillance of chlamydia and gonorrhoea: January-March 2012

Quarterly chlamydia and gonorrhoea rates (female, male and total population), April 2010 to March 2012



Denominator = Statistics New Zealand mid-year population estimates

Number of lab confirmed chlamydia cases (female, male and total population) and number of tests per 100 000 population, April 2010 to March 2012

	Q2 2010	Q3 2010	Q4 2010	Q1 2011	Q2 2011	Q3 2011	Q4 2011	Q1 2012
Number of lab-confirmed cases¹	315	294	312	329	316	358	318	340
<i>Female</i>	246	235	252	264	257	280	247	262
<i>Male</i>	69	59	59	64	59	78	70	78
Tests per 100 000 population²	2510	2577	2558	2751	2649	2791	2573	2904

¹ Total includes cases where sex is not reported

² Denominator = Statistics New Zealand mid-year population estimates

Number of lab confirmed gonorrhoea cases (female, male and total population) and number of tests per 100 000 population, April 2010 to March 2012

	Q2 2010	Q3 2010	Q4 2010	Q1 2011	Q2 2011	Q3 2011	Q4 2011	Q1 2012
Number of lab-confirmed cases¹	16	13	21	18	16	17	24	30
<i>Female</i>	6	5	9	7	7	8	11	15
<i>Male</i>	10	8	12	11	9	9	13	15
Tests per 100 000 population²	1881	1938	1850	1848	1774	1700	2053	2356

¹ Total includes cases where sex is not reported

² Denominator = Statistics New Zealand mid-year population estimates