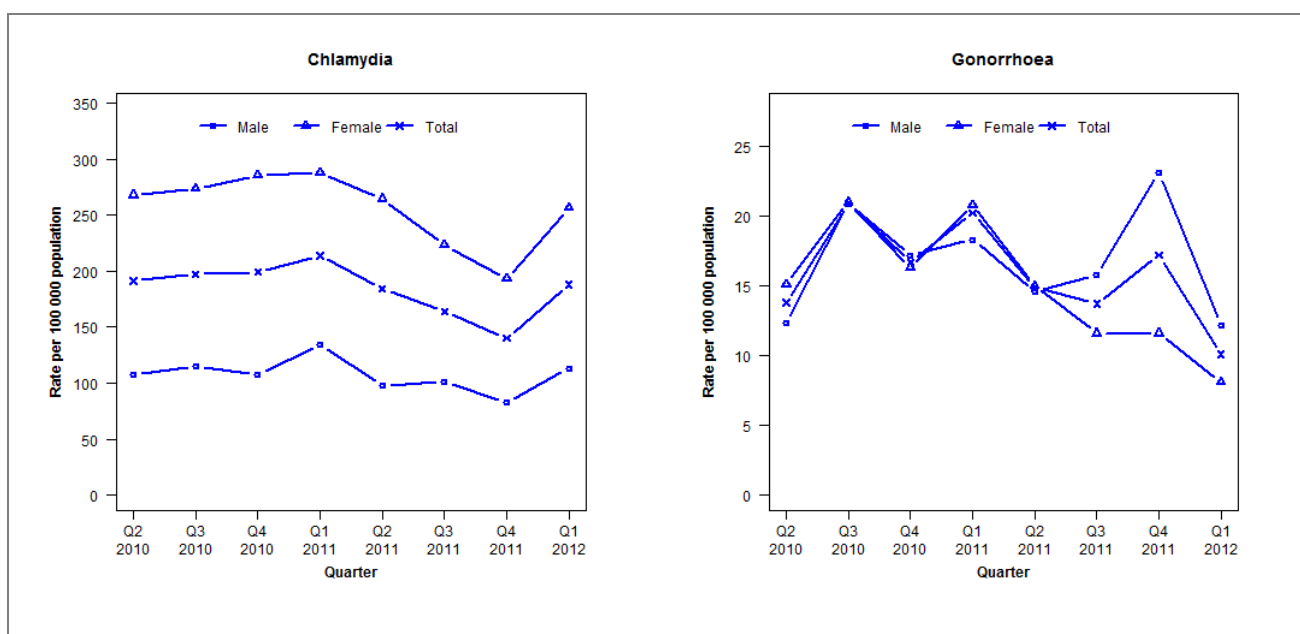


Laboratory surveillance of chlamydia and gonorrhoea: January-March 2012

Quarterly chlamydia and gonorrhoea rates (female, male and total population), April 2010 to March 2012



Denominator = Statistics New Zealand mid-year population estimates

Number of lab confirmed chlamydia cases (female, male and total population) and number of tests per 100 000 population, April 2010 to March 2012

	Q2 2010	Q3 2010	Q4 2010	Q1 2011	Q2 2011	Q3 2011	Q4 2011	Q1 2012
Number of lab-confirmed cases¹	320	330	333	360	310	276	236	317
<i>Female</i>	230	235	245	249	229	193	167	222
<i>Male</i>	88	94	88	110	80	83	68	93
Tests per 100 000 population²	1765	1813	1693	1727	1779	1734	1607	1739

¹ Total includes cases where sex is not reported

² Denominator = Statistics New Zealand mid-year population estimates

Number of lab confirmed gonorrhoea cases (female, male and total population) and number of tests per 100 000 population, April 2010 to March 2012

	Q2 2010	Q3 2010	Q4 2010	Q1 2011	Q2 2011	Q3 2011	Q4 2011	Q1 2012
Number of lab-confirmed cases¹	23	35	28	34	25	23	29	17
<i>Female</i>	13	18	14	18	13	10	10	7
<i>Male</i>	10	17	14	15	12	13	19	10
Tests per 100 000 population²	1488	1537	1446	1508	1604	1500	1426	1509

¹ Total includes cases where sex is not reported

² Denominator = Statistics New Zealand mid-year population estimates