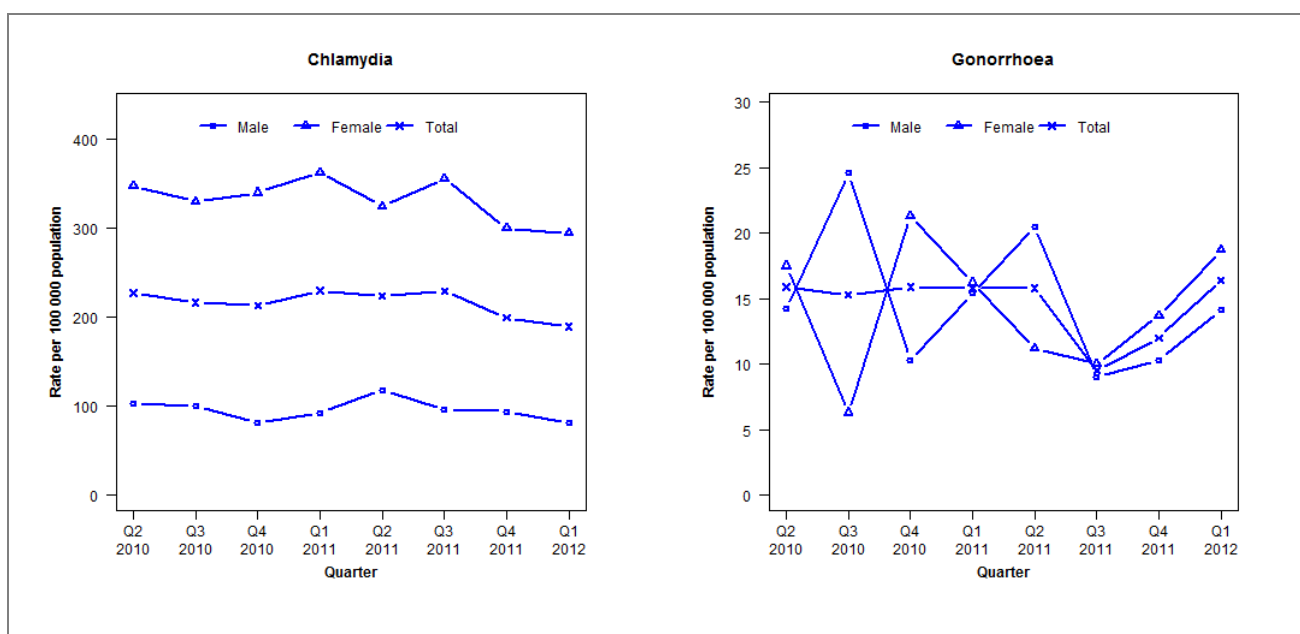


Laboratory surveillance of chlamydia and gonorrhoea: January-March 2012

Quarterly chlamydia and gonorrhoea rates (female, male and total population), April 2010 to March 2012



Denominator = Statistics New Zealand mid-year population estimates

Number of lab confirmed chlamydia cases (female, male and total population) and number of tests per 100 000 population, April 2010 to March 2012

	Q2 2010	Q3 2010	Q4 2010	Q1 2011	Q2 2011	Q3 2011	Q4 2011	Q1 2012
Number of lab-confirmed cases¹	357	340	334	363	353	362	315	299
<i>Female</i>	277	263	271	290	260	285	240	236
<i>Male</i>	80	77	63	72	92	75	73	63
Tests per 100 000 population²	1885	1932	1858	1921	1969	1877	1808	1664

¹ Total includes cases where sex is not reported² Denominator = Statistics New Zealand mid-year population estimates

Number of lab confirmed gonorrhoea cases (female, male and total population) and number of tests per 100 000 population, April 2010 to March 2012

	Q2 2010	Q3 2010	Q4 2010	Q1 2011	Q2 2011	Q3 2011	Q4 2011	Q1 2012
Number of lab-confirmed cases¹	25	24	25	25	25	15	19	26
<i>Female</i>	14	5	17	13	9	8	11	15
<i>Male</i>	11	19	8	12	16	7	8	11
Tests per 100 000 population²	2405	2692	2703	2501	2732	2923	2811	2878

¹ Total includes cases where sex is not reported² Denominator = Statistics New Zealand mid-year population estimates