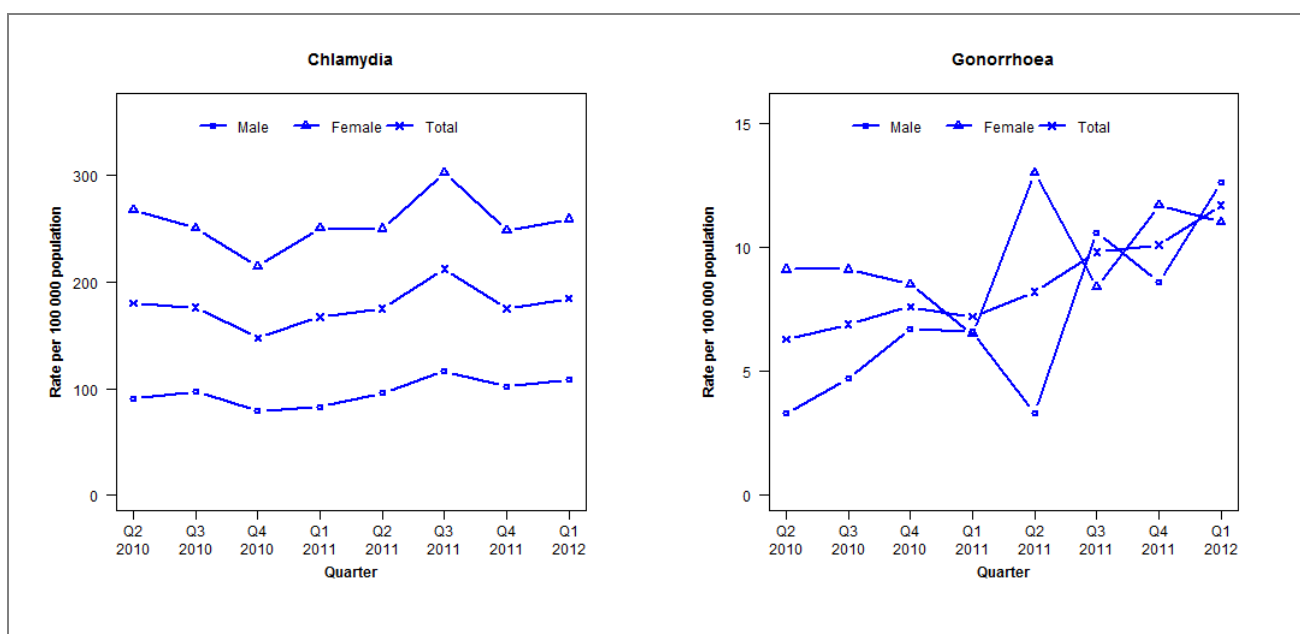


## Laboratory surveillance of chlamydia and gonorrhoea: January-March 2012

Quarterly chlamydia and gonorrhoea rates (female, male and total population), April 2010 to March 2012



Denominator = Statistics New Zealand mid-year population estimates

Note: PCR testing for gonorrhoea introduced in Q4 2011

### Number of lab confirmed chlamydia cases (female, male and total population) and number of tests per 100 000 population, April 2010 to March 2012

|  | Q2 2010 | Q3 2010 | Q4 2010 | Q1 2011 | Q2 2011 | Q3 2011 | Q4 2011 | Q1 2012 |
|--|---------|---------|---------|---------|---------|---------|---------|---------|
| <b>Number of lab-confirmed cases<sup>1</sup></b> | 546     | 534     | 447     | 512     | 536     | 651     | 537     | 566     |
| <i>Female</i>                                    | 410     | 384     | 328     | 387     | 386     | 467     | 383     | 400     |
| <i>Male</i>                                      | 135     | 145     | 118     | 125     | 145     | 176     | 154     | 164     |
| <b>Tests per 100 000 population<sup>2</sup></b>  | 2454    | 2484    | 2154    | 2290    | 2478    | 2434    | 2203    | 2364    |

<sup>1</sup> Total includes cases where sex is not reported

<sup>2</sup> Denominator = Statistics New Zealand mid-year population estimates

### Number of lab confirmed gonorrhoea cases (female, male and total population) and number of tests per 100 000 population, April 2010 to March 2012

|  | Q2 2010 | Q3 2010 | Q4 2010 | Q1 2011 | Q2 2011 | Q3 2011 | Q4 2011 | Q1 2012 |
|--|---------|---------|---------|---------|---------|---------|---------|---------|
| <b>Number of lab-confirmed cases<sup>1</sup></b> | 19      | 21      | 23      | 22      | 25      | 30      | 31      | 36      |
| <i>Female</i>                                    | 14      | 14      | 13      | 10      | 20      | 13      | 18      | 17      |
| <i>Male</i>                                      | 5       | 7       | 10      | 10      | 5       | 16      | 13      | 19      |
| <b>Tests per 100 000 population<sup>2</sup></b>  | 1351    | 1319    | 1141    | 1190    | 1357    | 1217    | 1873    | 2370    |

<sup>1</sup> Total includes cases where sex is not reported

<sup>2</sup> Denominator = Statistics New Zealand mid-year population estimates