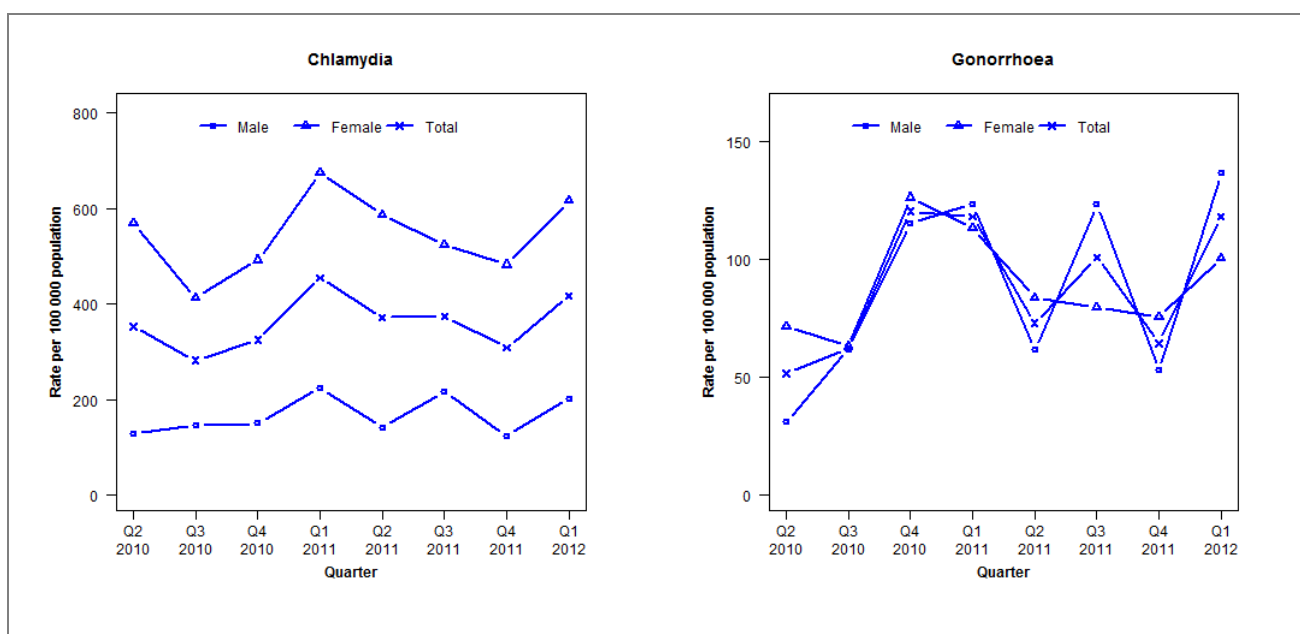


## Laboratory surveillance of chlamydia and gonorrhoea: January-March 2012

Quarterly chlamydia and gonorrhoea rates (female, male and total population), April 2010 to March 2012



Denominator = Statistics New Zealand mid-year population estimates

### Number of lab confirmed chlamydia cases (female, male and total population) and number of tests per 100 000 population, April 2010 to March 2012

	Q2 2010	Q3 2010	Q4 2010	Q1 2011	Q2 2011	Q3 2011	Q4 2011	Q1 2012
<b>Number of lab-confirmed cases<sup>1</sup></b>	164	131	151	212	173	174	144	194
<i>Female</i>	135	98	117	161	140	125	115	147
<i>Male</i>	29	33	34	51	32	49	28	46
<b>Tests per 100 000 population<sup>2</sup></b>	2568	2703	2406	2687	2792	2766	2373	2584

<sup>1</sup> Total includes cases where sex is not reported

<sup>2</sup> Denominator = Statistics New Zealand mid-year population estimates

### Number of lab confirmed gonorrhoea cases (female, male and total population) and number of tests per 100 000 population, April 2010 to March 2012

	Q2 2010	Q3 2010	Q4 2010	Q1 2011	Q2 2011	Q3 2011	Q4 2011	Q1 2012
<b>Number of lab-confirmed cases<sup>1</sup></b>	24	29	56	55	34	47	30	55
<i>Female</i>	17	15	30	27	20	19	18	24
<i>Male</i>	7	14	26	28	14	28	12	31
<b>Tests per 100 000 population<sup>2</sup></b>	2092	2260	2138	2356	2575	2438	2152	2275

<sup>1</sup> Total includes cases where sex is not reported

<sup>2</sup> Denominator = Statistics New Zealand mid-year population estimates