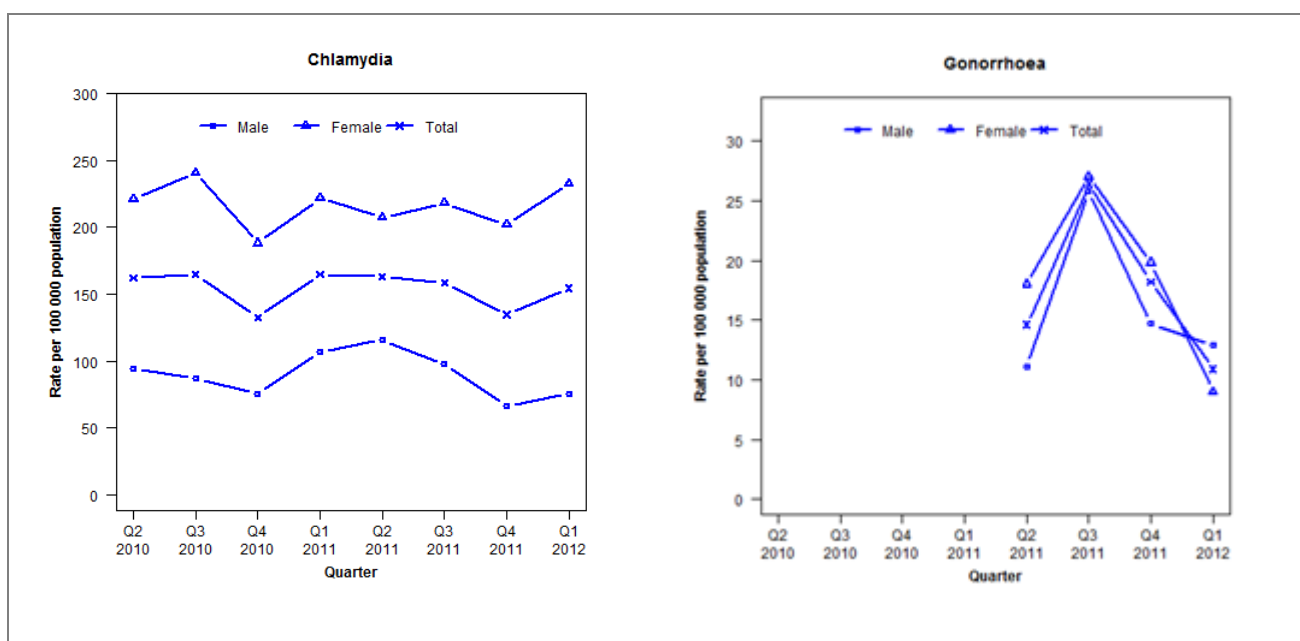


Laboratory surveillance of chlamydia and gonorrhoea: January-March 2012

Quarterly chlamydia and gonorrhoea rates (female, male and total population), April 2010 to March 2012



Denominator = Statistics New Zealand mid-year population estimates

Note: Taranaki Base Hospital laboratory began contributing gonorrhoea data during 2011

Gonorrhoea rates are not presented for Q2 2010 to Q1 2011 as there are fewer than five cases in a quarter

Number of lab confirmed chlamydia cases (female, male and total population) and number of tests per 100 000 population, April 2010 to March 2012

	Q2 2010	Q3 2010	Q4 2010	Q1 2011	Q2 2011	Q3 2011	Q4 2011	Q1 2012
Number of lab-confirmed cases¹	177	180	145	181	179	174	148	170
<i>Female</i>	122	133	104	123	115	121	112	129
<i>Male</i>	51	47	41	58	63	53	36	41
Tests per 100 000 population	2256	2145	2086	2379	2188	2287	2165	2267

¹ Total includes cases where sex is not reported

² Denominator = Statistics New Zealand mid-year population estimates

Number of lab confirmed gonorrhoea cases (female, male and total population) and number of tests per 100 000 population, April 2010 to March 2012

	Q2 2010	Q3 2010	Q4 2010	Q1 2011	Q2 2011	Q3 2011	Q4 2011	Q1 2012
Number of lab-confirmed cases¹	6	7	4	10	16	29	20	12
<i>Female</i>	3	5	1	7	10	15	11	5
<i>Male</i>	3	2	3	3	6	14	8	7
Tests per 100 000 population	1928	1881	1745	1908	2466	2598	2448	2552

¹ Total includes cases where sex is not reported

² Denominator = Statistics New Zealand mid-year population estimates