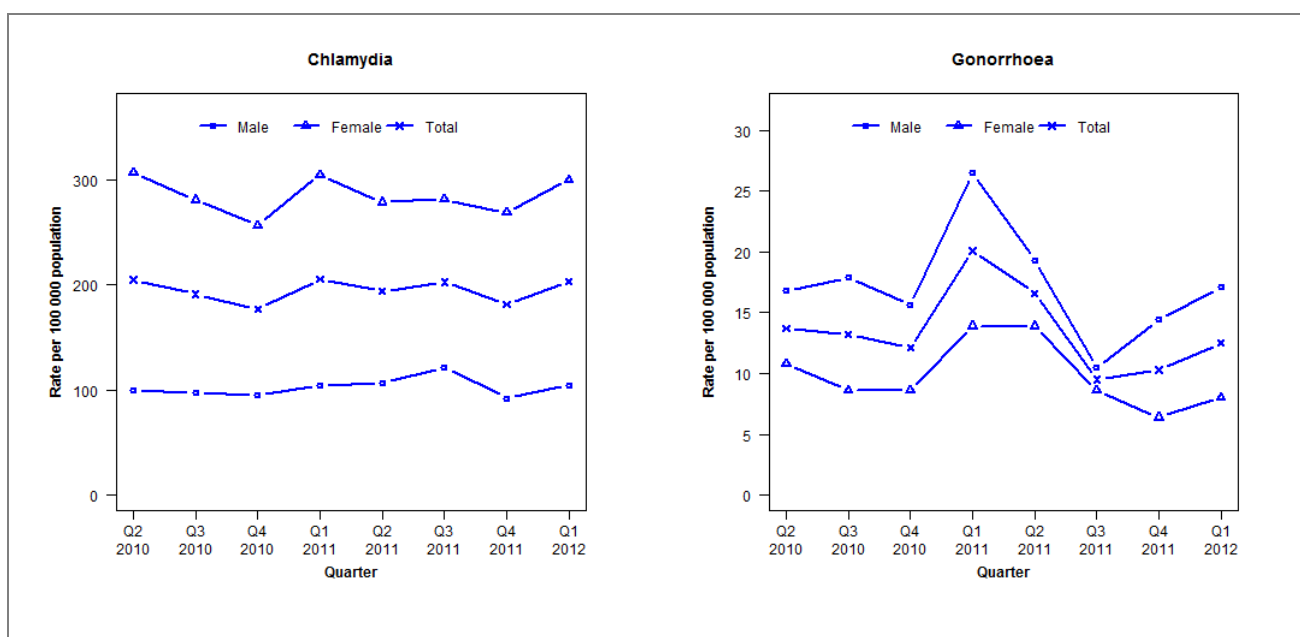


Laboratory surveillance of chlamydia and gonorrhoea: January-March 2012

Quarterly chlamydia and gonorrhoea rates (female, male and total population), April 2010 to March 2012



Denominator = Statistics New Zealand mid-year population estimates

Number of lab confirmed chlamydia cases (female, male and total population) and number of tests per 100 000 population, April 2010 to March 2012

	Q2 2010	Q3 2010	Q4 2010	Q1 2011	Q2 2011	Q3 2011	Q4 2011	Q1 2012
Number of lab-confirmed cases¹	747	697	645	756	713	746	668	748
<i>Female</i>	568	520	475	568	520	525	501	559
<i>Male</i>	179	175	170	188	193	220	167	189
Tests per 100 000 population²	2035	2032	1911	2022	2023	2121	1894	2053

¹Total includes cases where sex is not reported

²Denominator = Statistics New Zealand mid-year population estimates

Number of lab confirmed gonorrhoea cases (female, male and total population) and number of tests per 100 000 population, April 2010 to March 2012

	Q2 2010	Q3 2010	Q4 2010	Q1 2011	Q2 2011	Q3 2011	Q4 2011	Q1 2012
Number of lab-confirmed cases¹	50	48	44	74	61	35	38	46
<i>Female</i>	20	16	16	26	26	16	12	15
<i>Male</i>	30	32	28	48	35	19	26	31
Tests per 100 000 population²	1865	1874	1804	1873	1748	1850	1684	1848

¹Total includes cases where sex is not reported

²Denominator = Statistics New Zealand mid-year population estimates