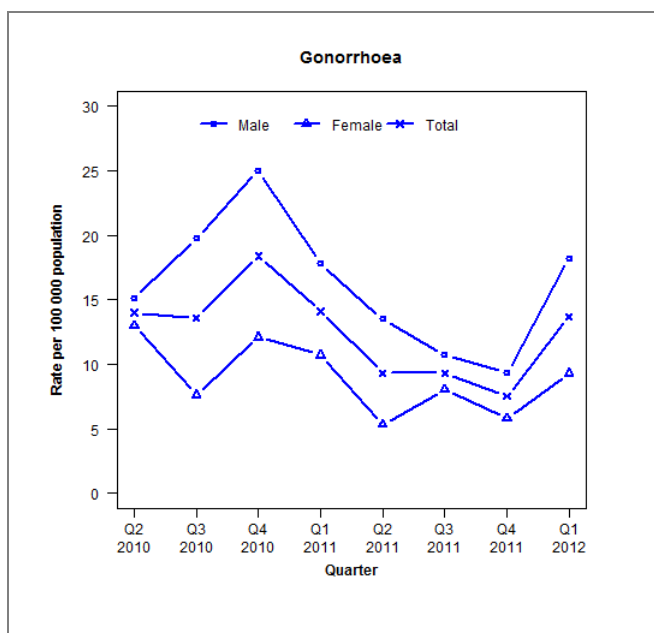


## Laboratory surveillance of gonorrhoea: January-March 2012

Quarterly gonorrhoea rates (female, male and total population), April 2010 to March 2012



Denominator = Statistics New Zealand mid-year population estimates

Note: Chlamydia data not available for Wellington region

## Number of lab confirmed gonorrhoea cases (female, male and total population) and number of tests per 100 000 population, April 2010 to March 2012

	Q2 2010	Q3 2010	Q4 2010	Q1 2011	Q2 2011	Q3 2011	Q4 2011	Q1 2012
<b>Number of lab-confirmed cases<sup>1</sup></b>	61	59	80	62	41	41	33	60
<i>Female</i>	29	17	27	24	12	18	13	21
<i>Male</i>	32	42	53	38	29	23	20	39
<b>Tests per 100 000 population<sup>2</sup></b>	1653	1699	1545	1621	1681	1723	1587	1765

<sup>1</sup> Total includes cases where sex is not reported

<sup>2</sup> Denominator = Statistics New Zealand mid-year population estimates