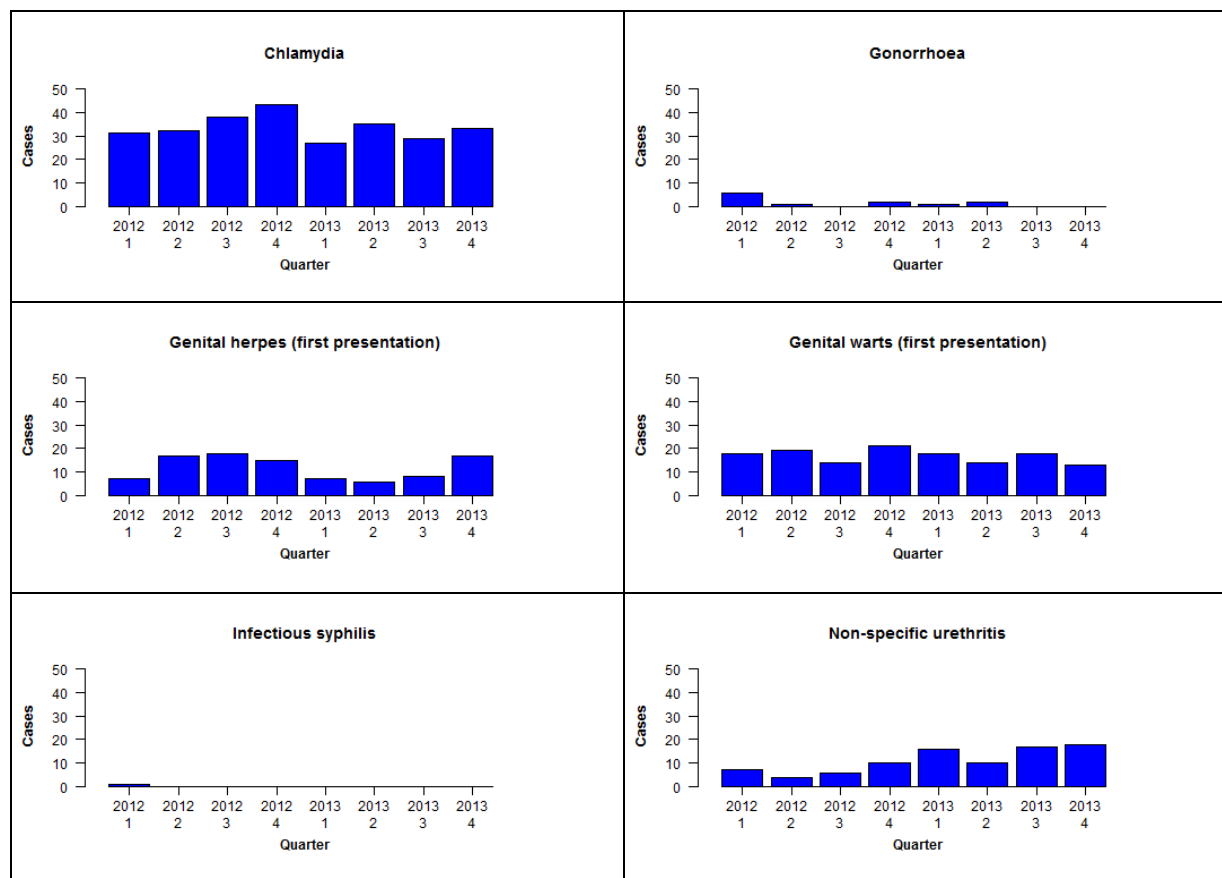


Sexual health clinic (SHC) surveillance of STIs: October-December 2013

Quarterly case counts in participating SHCs by disease, January 2012 to December 2013



No cases of chancroid, granuloma inguinale or lymphogranuloma venereum were reported during the last quarter

Note: Clinic was closed for 3 weeks during Quarter 1 2013

Quarterly case counts in participating SHCs by disease, January 2012 to December 2013

	Q1 2012	Q2 2012	Q3 2012	Q4 2012	Q1 2013	Q2 2013	Q3 2013	Q4 2013
Chlamydia	31	32	38	43	27	35	29	33
Gonorrhoea	6	1	0	2	1	2	0	0
Genital herpes (first presentation)	7	17	18	15	7	6	8	17
Genital warts (first presentation)	18	19	14	21	18	14	18	13
Infectious syphilis	1	0	0	0	0	0	0	0
Non-specific urethritis	7	4	6	10	16	10	17	18