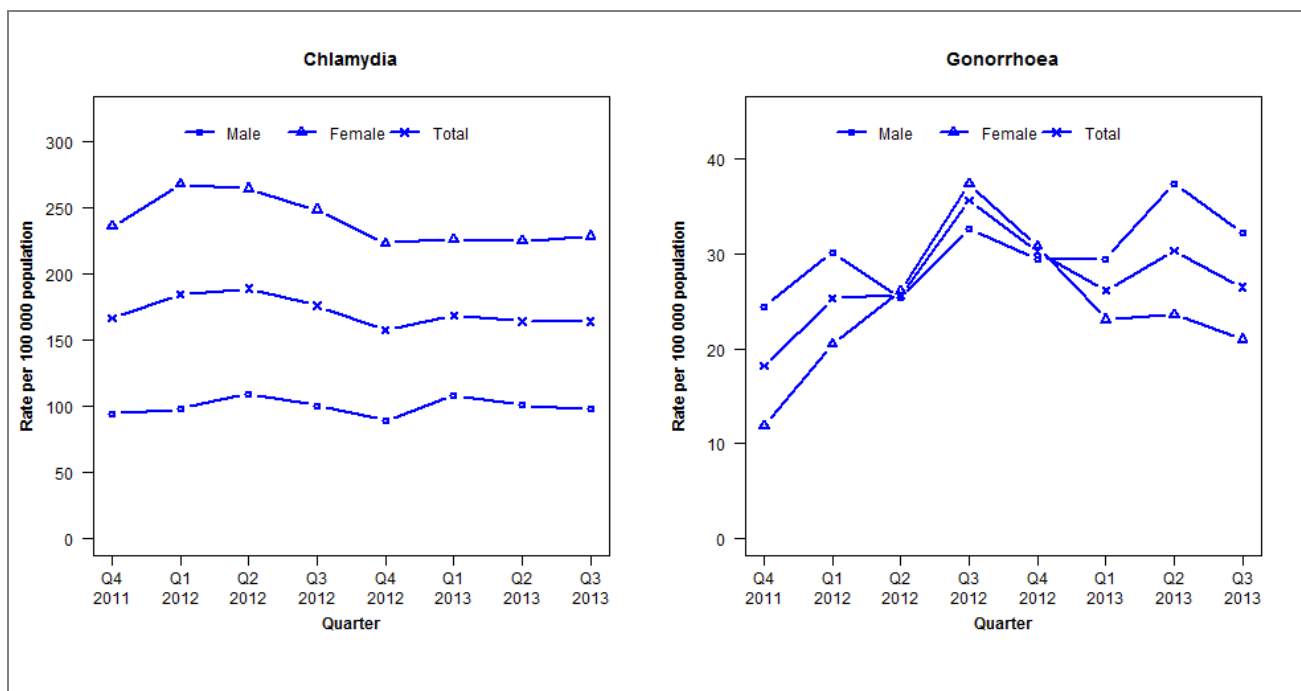


Laboratory surveillance of chlamydia and gonorrhoea: July - September 2013

Quarterly chlamydia and gonorrhoea rates (female, male and total population), Oct 2011 to Sep 2013



Denominator = Statistics New Zealand mid-year population estimates

Note: Routine use of NAAT for gonorrhoea testing introduced by LabPlus in April 2011 and Labtests in March 2012. Data not received from Waitemata DHB since Q1 2013.

Number of lab confirmed chlamydia cases (female, male and total population) and number of tests per 100 000 population, October 2011 to September 2013

	Q4 2011	Q1 2012	Q2 2012	Q3 2012	Q4 2012	Q1 2013	Q2 2013	Q3 2013
Number of lab-confirmed cases¹	2499	2809	2875	2678	2395	2563	2497	2499
<i>Female</i>	1800	2074	2046	1922	1728	1751	1740	1768
<i>Male</i>	696	734	818	752	667	811	755	731
Tests per 100 000 population²	2336	2488	2469	2486	2337	2433	2476	2591

¹Total includes cases where sex is not reported

²Denominator = Statistics New Zealand mid-year population estimates

Number of lab confirmed gonorrhoea cases (female, male and total population) and number of tests per 100 000 population, October 2011 to September 2013

	Q4 2011	Q1 2012	Q2 2012	Q3 2012	Q4 2012	Q1 2013	Q2 2013	Q3 2013
Number of lab-confirmed cases¹	273	386	392	544	461	400	464	404
<i>Female</i>	91	159	202	290	239	179	183	163
<i>Male</i>	181	226	190	245	221	221	280	241
Tests per 100 000 population²	3702	3895	3714	3576	2506	2780	2839	2918

¹Total includes cases where sex is not reported

²Denominator = Statistics New Zealand mid-year population estimates