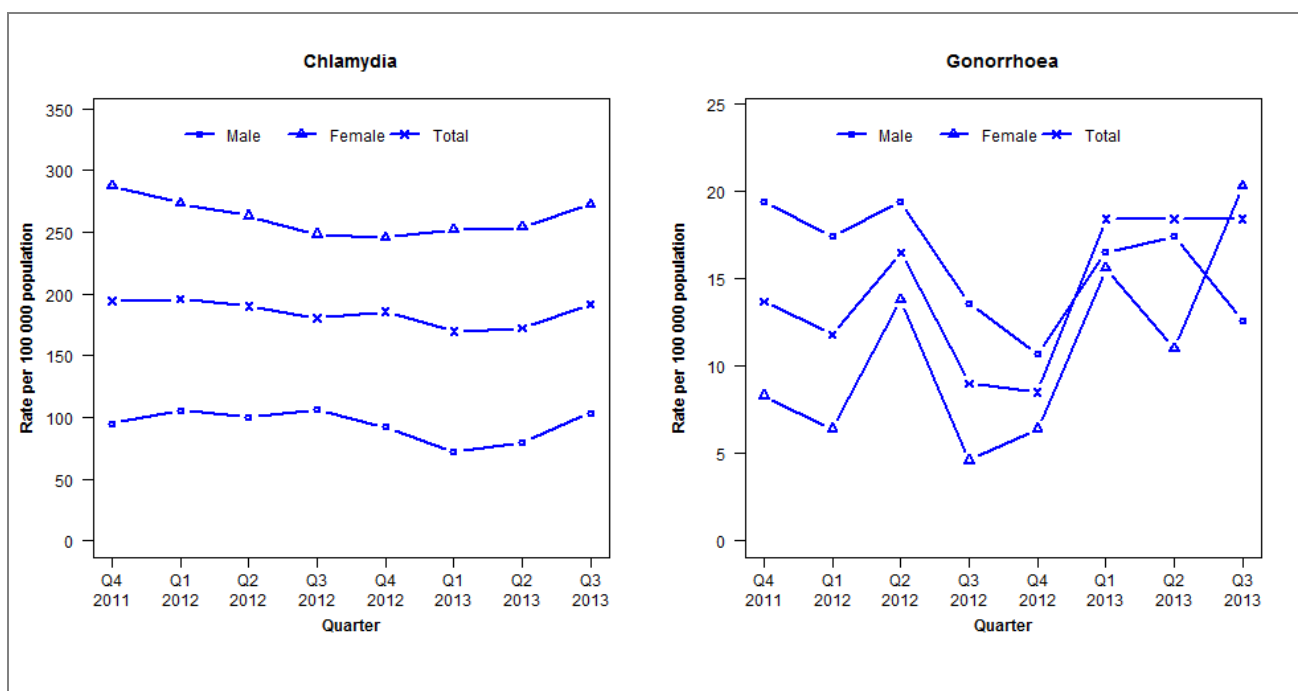


Laboratory surveillance of chlamydia and gonorrhoea: July - September 2013

Quarterly chlamydia and gonorrhoea rates (female, male and total population), Oct 2011 to Sep 2013



Denominator = Statistics New Zealand mid-year population estimates

Note: New data processing procedures from Q1 2013 may have impacted slightly on the counts and rates produced. NAAT (nucleic acid amplification testing) for gonorrhoea testing introduced in Q3 2013.

Number of lab confirmed chlamydia cases (female, male and total population) and number of tests per 100 000 population, October 2011 to September 2013

	Q4 2011	Q1 2012	Q2 2012	Q3 2012	Q4 2012	Q1 2013	Q2 2013	Q3 2013
Number of lab-confirmed cases¹	412	416	403	383	394	360	366	407
<i>Female</i>	312	297	286	270	267	274	276	296
<i>Male</i>	98	109	103	110	95	74	82	107
Tests per 100 000 population²	1991	2151	2010	2052	2013	1938	1984	2036

¹Total includes cases where sex is not reported

²Denominator = Statistics New Zealand mid-year population estimates

Number of lab confirmed gonorrhoea cases (female, male and total population) and number of tests per 100 000 population, October 2011 to September 2013

	Q4 2011	Q1 2012	Q2 2012	Q3 2012	Q4 2012	Q1 2013	Q2 2013	Q3 2013
Number of lab-confirmed cases¹	29	25	35	19	18	39	39	39
<i>Female</i>	9	7	15	5	7	17	12	22
<i>Male</i>	20	18	20	14	11	17	18	13
Tests per 100 000 population²	1511	1595	1518	1518	1464	1379	1399	2020

¹Total includes cases where sex is not reported

²Denominator = Statistics New Zealand mid-year population estimates