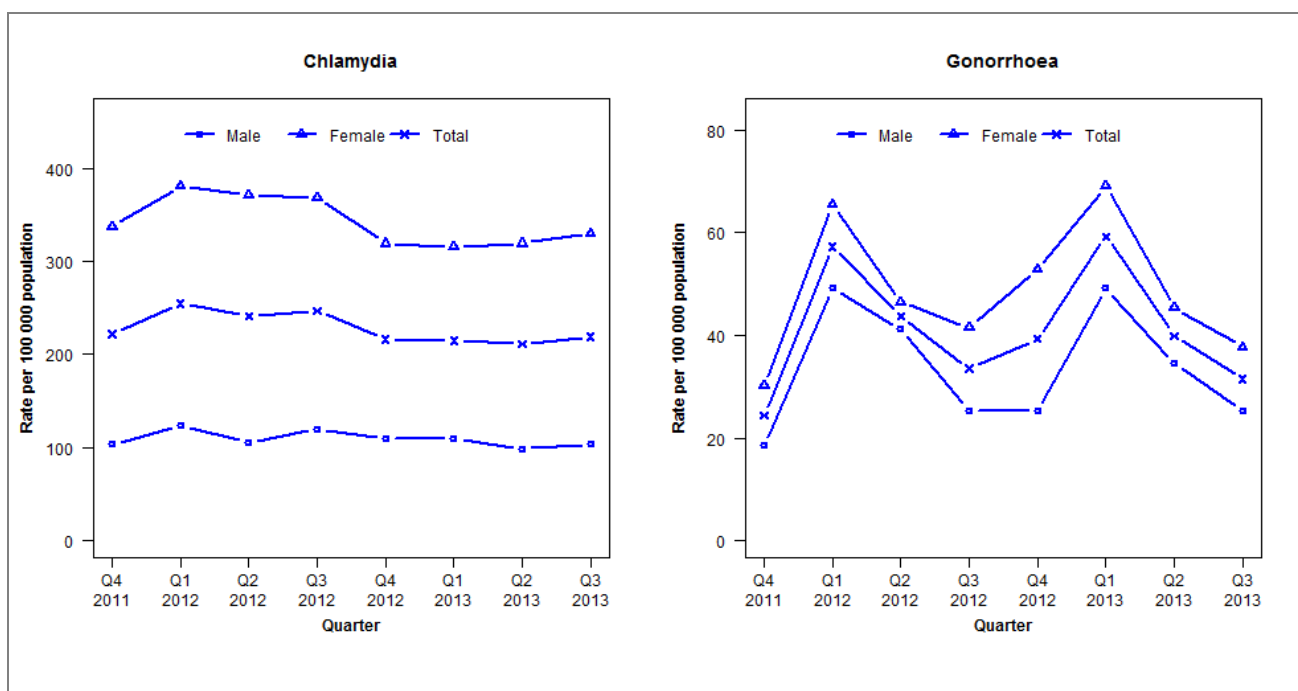


## Laboratory surveillance of chlamydia and gonorrhoea: July - September 2013

### Quarterly chlamydia and gonorrhoea rates (female, male and total population), Oct 2011 to Sep 2013



Denominator = Statistics New Zealand mid-year population estimates

Note: New data processing procedures from Q1 2013 may have impacted slightly on the counts and rates produced. NAAT (nucleic acid amplification testing) for gonorrhoea testing introduced during Q4 2011

### Number of lab confirmed chlamydia cases (female, male and total population) and number of tests per 100 000 population, October 2011 to September 2013

	Q4 2011	Q1 2012	Q2 2012	Q3 2012	Q4 2012	Q1 2013	Q2 2013	Q3 2013
<b>Number of lab-confirmed cases<sup>1</sup></b>	346	396	374	383	336	334	328	340
<i>Female</i>	268	303	295	293	254	251	254	262
<i>Male</i>	78	93	79	90	82	82	74	78
<b>Tests per 100 000 population<sup>2</sup></b>	1807	1997	1856	1949	1849	1914	1936	2071

<sup>1</sup>Total includes cases where sex is not reported

<sup>2</sup>Denominator = Statistics New Zealand mid-year population estimates

### Number of lab confirmed gonorrhoea cases (female, male and total population) and number of tests per 100 000 population, October 2011 to September 2013

	Q4 2011	Q1 2012	Q2 2012	Q3 2012	Q4 2012	Q1 2013	Q2 2013	Q3 2013
<b>Number of lab-confirmed cases<sup>1</sup></b>	38	89	68	52	61	92	62	49
<i>Female</i>	24	52	37	33	42	55	36	30
<i>Male</i>	14	37	31	19	19	37	26	19
<b>Tests per 100 000 population<sup>2</sup></b>	1912	1997	1856	1949	1849	2390	2382	2497

<sup>1</sup>Total includes cases where sex is not reported

<sup>2</sup>Denominator = Statistics New Zealand mid-year population estimates