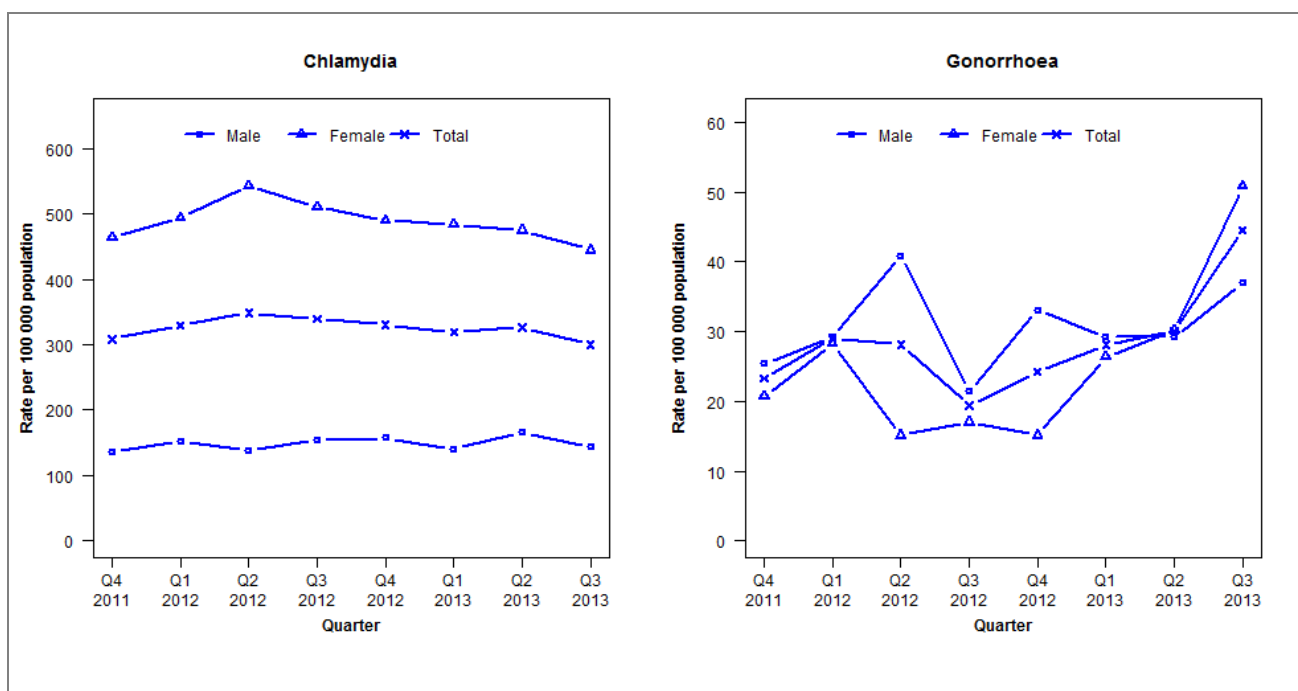


## Laboratory surveillance of chlamydia and gonorrhoea: July - September 2013

### Quarterly chlamydia and gonorrhoea rates (female, male and total population), Oct 2011 to Sep 2013



Denominator = Statistics New Zealand mid-year population estimates

Note: New data processing procedures from Q1 2013 may have impacted slightly on the counts and rates produced. NAAT (nucleic acid amplification testing) for Gonorrhoea testing introduced for Pathlab Rotorua 1 July 2013.

### Number of lab confirmed chlamydia cases (female, male and total population) and number of tests per 100 000 population, October 2011 to September 2013

	Q4 2011	Q1 2012	Q2 2012	Q3 2012	Q4 2012	Q1 2013	Q2 2013	Q3 2013
<b>Number of lab-confirmed cases<sup>1</sup></b>	318	340	360	350	341	329	337	310
<i>Female</i>	247	262	288	271	260	257	252	236
<i>Male</i>	70	78	71	79	81	72	85	74
<b>Tests per 100 000 population<sup>2</sup></b>	2573	2901	2697	2806	2632	2835	2905	2831

<sup>1</sup>Total includes cases where sex is not reported

<sup>2</sup>Denominator = Statistics New Zealand mid-year population estimates

### Number of lab confirmed gonorrhoea cases (female, male and total population) and number of tests per 100 000 population, October 2011 to September 2013

	Q4 2011	Q1 2012	Q2 2012	Q3 2012	Q4 2012	Q1 2013	Q2 2013	Q3 2013
<b>Number of lab-confirmed cases<sup>1</sup></b>	24	30	29	20	25	29	31	46
<i>Female</i>	11	15	8	9	8	14	16	27
<i>Male</i>	13	15	21	11	17	15	15	19
<b>Tests per 100 000 population<sup>2</sup></b>	2053	2354	2150	2176	1925	2096	2112	3081

<sup>1</sup>Total includes cases where sex is not reported

<sup>2</sup>Denominator = Statistics New Zealand mid-year population estimates