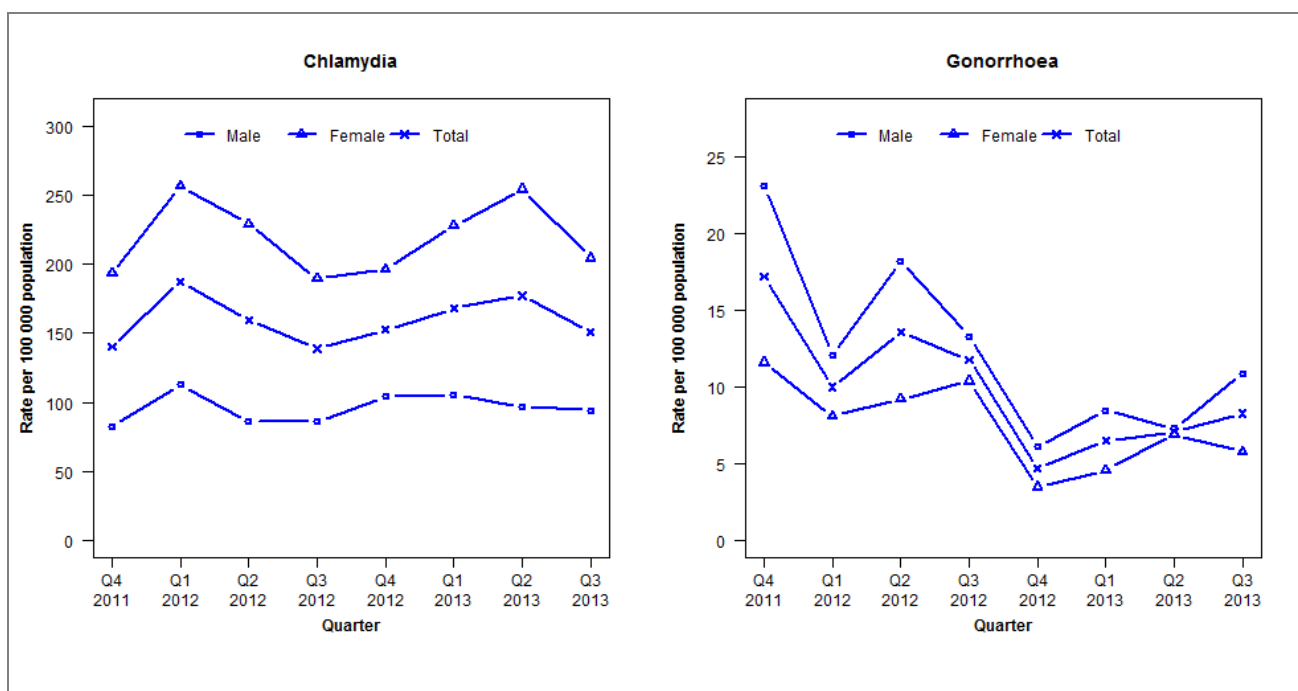


## Laboratory surveillance of chlamydia and gonorrhoea: July - September 2013

### Quarterly chlamydia and gonorrhoea rates (female, male and total population), Oct 2011 to Sep 2013



Denominator = Statistics New Zealand mid-year population estimates

Note: New data processing procedures from Q1 2013 may have impacted slightly on the counts and rates produced.

### Number of lab confirmed chlamydia cases (female, male and total population) and number of tests per 100 000 population, October 2011 to September 2013

	Q4 2011	Q1 2012	Q2 2012	Q3 2012	Q4 2012	Q1 2013	Q2 2013	Q3 2013
<b>Number of lab-confirmed cases<sup>1</sup></b>	236	317	270	235	258	284	300	255
<i>Female</i>	167	222	198	164	170	197	220	177
<i>Male</i>	68	93	71	71	86	87	80	78
<b>Tests per 100 000 population<sup>2</sup></b>	1607	1730	1593	1678	1685	1680	1759	1743

<sup>1</sup>Total includes cases where sex is not reported

<sup>2</sup>Denominator = Statistics New Zealand mid-year population estimates

### Number of lab confirmed gonorrhoea cases (female, male and total population) and number of tests per 100 000 population, October 2011 to September 2013

	Q4 2011	Q1 2012	Q2 2012	Q3 2012	Q4 2012	Q1 2013	Q2 2013	Q3 2013
<b>Number of lab-confirmed cases<sup>1</sup></b>	29	17	23	20	8	11	12	14
<i>Female</i>	10	7	8	9	3	4	6	5
<i>Male</i>	19	10	15	11	5	7	6	9
<b>Tests per 100 000 population<sup>2</sup></b>	1426	1501	1371	1423	1459	1448	1480	1460

<sup>1</sup>Total includes cases where sex is not reported

<sup>2</sup>Denominator = Statistics New Zealand mid-year population estimates