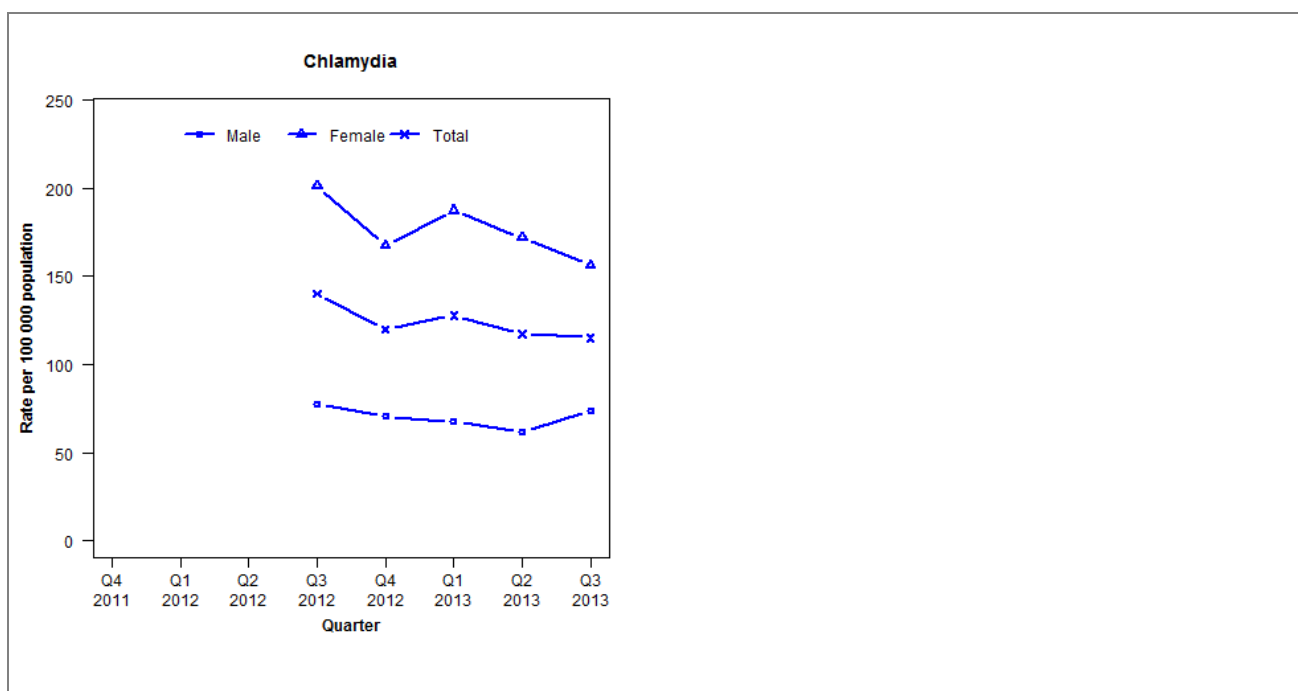


## Laboratory surveillance of chlamydia and gonorrhoea: July - September 2013

### Quarterly chlamydia and gonorrhoea rates (female, male and total population), Oct 2011 to Sep 2013



Denominator = Statistics New Zealand mid-year population estimates

Note: New data processing procedures from Q1 2013 may have impacted slightly on the counts and rates produced.

Data only available for Nelson Marlborough DHB from Q3 2012. Gonorrhoea rates are not presented as there are fewer than five cases in many quarters.

### Number of lab confirmed chlamydia cases (female, male and total population) and number of tests per 100 000 population, October 2011 to September 2013

	Q4 2011	Q1 2012	Q2 2012	Q3 2012	Q4 2012	Q1 2013	Q2 2013	Q3 2013
<b>Number of lab-confirmed cases<sup>1</sup></b>	-	-	-	197	169	180	165	162
<i>Female</i>	-	-	-	143	119	133	122	111
<i>Male</i>	-	-	-	54	49	47	43	51
<b>Tests per 100 000 population<sup>2</sup></b>	-	-	-	*	1631	1726	1617	1684

<sup>1</sup>Total includes cases where sex is not reported

<sup>2</sup>Denominator = Statistics New Zealand mid-year population estimates

\*Number of tests were not available for July and August Q3 2012

### Number of lab confirmed gonorrhoea cases (female, male and total population) and number of tests per 100 000 population, October 2011 to September 2013

	Q4 2011	Q1 2012	Q2 2012	Q3 2012	Q4 2012	Q1 2013	Q2 2013	Q3 2013
<b>Number of lab-confirmed cases<sup>1</sup></b>	-	-	-	13	10	1	7	4
<i>Female</i>	-	-	-	8	3	1	1	2
<i>Male</i>	-	-	-	5	7	0	6	2
<b>Tests per 100 000 population<sup>2</sup></b>	-	-	-	*	1631	3487	3279	3332

<sup>1</sup>Total includes cases where sex is not reported

<sup>2</sup>Denominator = Statistics New Zealand mid-year population estimates

\*Number of tests were not available for July and August Q3 2012