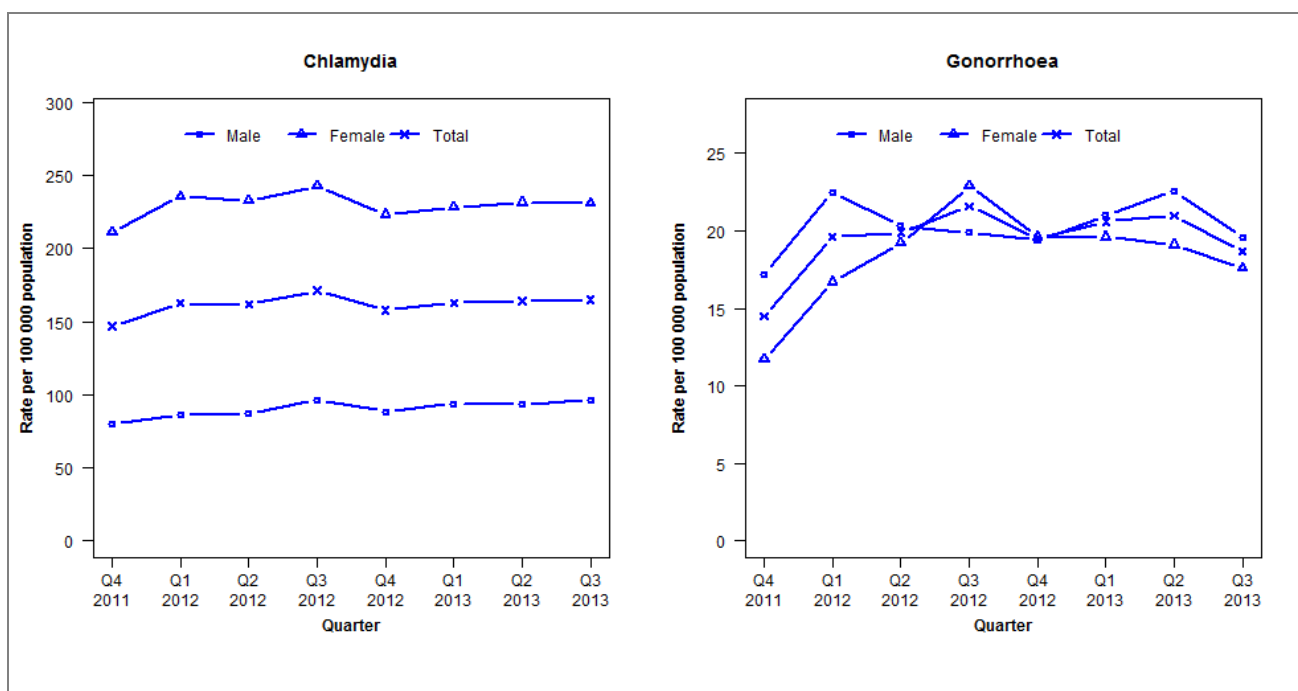


Laboratory surveillance of chlamydia and gonorrhoea: July - September 2013

Quarterly chlamydia and gonorrhoea rates (female, male and total population), Oct 2011 to Sep 2013



Denominator = Statistics New Zealand mid-year population estimates

Note: New data processing procedures from Q1 2013 may have impacted slightly on the counts and rates produced. NAAT (nucleic acid amplification testing) for gonorrhoea has been introduced in some laboratories since Q4 2011. Refer to DHB level reports for further details. Data incomplete from Q2 2013 for Northland DHB. Data not received from Waitemata DHB since Q1 2013.

Data not available for NMDHB and SCDHB before Q3 2012 and testing data incomplete for Q3 NMDHB and SCDHB

Number of lab confirmed chlamydia cases (female, male and total population) and number of tests per 100 000 population, October 2011 to September 2013

	Q4 2011	Q1 2012	Q2 2012	Q3 2012	Q4 2012	Q1 2013	Q2 2013	Q3 2013
Number of lab-confirmed cases¹	6186	6883	6847	7592	6999	7224	7268	7308
<i>Female</i>	4522	5075	5008	5469	5030	5142	5215	5198
<i>Male</i>	1653	1791	1806	2098	1925	2045	2029	2098
Tests per 100 000 population²	1768	1904	1884	2154	2086	2163	2192	2285

¹Total includes cases where sex is not reported

²Denominator = Statistics New Zealand mid-year population estimates

Number of lab confirmed gonorrhoea cases (female, male and total population) and number of tests per 100 000 population, October 2011 to September 2013

	Q4 2011	Q1 2012	Q2 2012	Q3 2012	Q4 2012	Q1 2013	Q2 2013	Q3 2013
Number of lab-confirmed cases¹	609	829	843	959	865	913	932	830
<i>Female</i>	251	359	414	515	442	442	429	397
<i>Male</i>	355	469	422	434	422	457	492	427
Tests per 100 000 population²	2399	2560	2536	2489	2145	2479	2498	2639

¹Total includes cases where sex is not reported

²Denominator = Statistics New Zealand mid-year population estimates