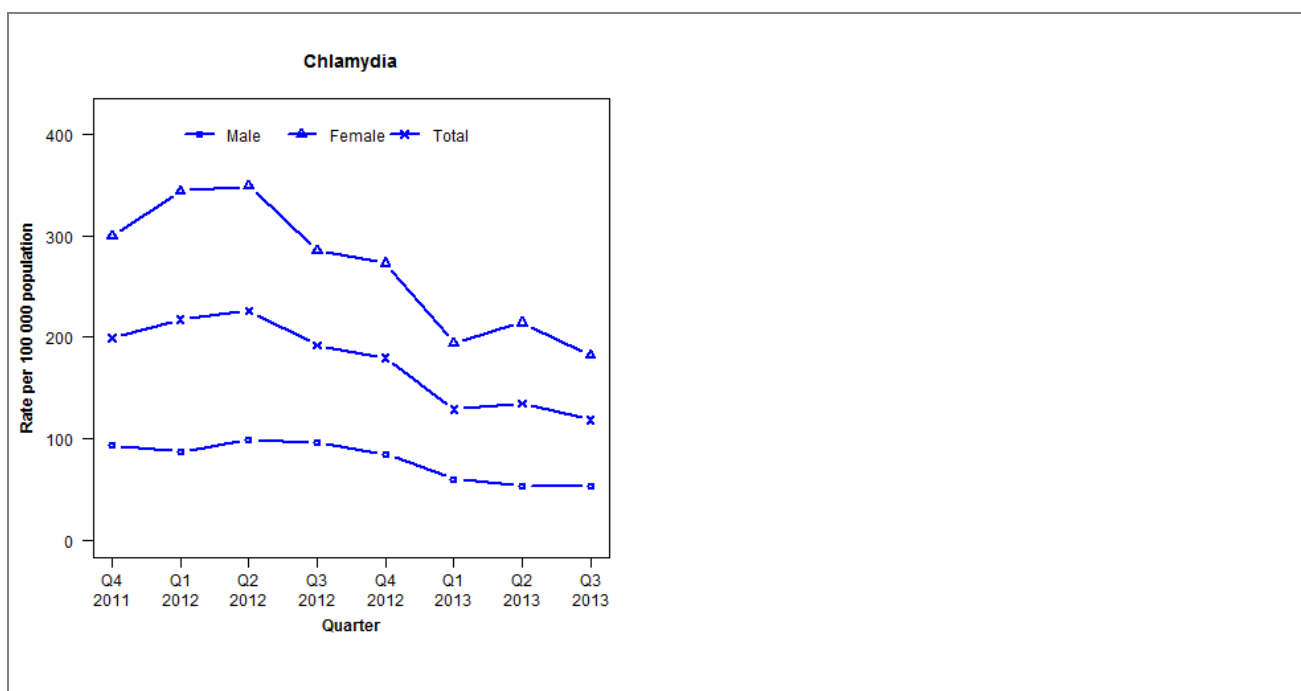


Laboratory surveillance of chlamydia and gonorrhoea: July - September 2013

Quarterly chlamydia and gonorrhoea rates (female, male and total population), Oct 2011 to Sep 2013



Denominator = Statistics New Zealand mid-year population estimates

Note: New data processing procedures from Q1 2013 may have impacted slightly on the counts and rates produced. NAAT (nucleic acid amplification testing) for gonorrhoea testing introduced in Q1 2012. Gonorrhoea rates are not present as data were incomplete from Q2 2013.

Number of lab confirmed chlamydia cases (female, male and total population) and number of tests per 100 000 population, October 2011 to September 2013

	Q4 2011	Q1 2012	Q2 2012	Q3 2012	Q4 2012	Q1 2013	Q2 2013	Q3 2013
Number of lab-confirmed cases¹	315	344	358	304	285	204	214	188
<i>Female</i>	240	276	280	229	219	156	172	146
<i>Male</i>	73	68	77	75	66	47	42	42
Tests per 100 000 population²	1808	1911	1838	1849	1857	1418	1465	1475

¹Total includes cases where sex is not reported

²Denominator = Statistics New Zealand mid-year population estimates

Number of lab confirmed gonorrhoea cases (female, male and total population) and number of tests per 100 000 population, October 2011 to September 2013

	Q4 2011	Q1 2012	Q2 2012	Q3 2012	Q4 2012	Q1 2013	Q2 2013	Q3 2013
Number of lab-confirmed cases¹	19	38	52	39	44	32	*	*
<i>Female</i>	11	25	29	27	26	18	*	*
<i>Male</i>	8	13	22	12	18	14	*	*
Tests per 100 000 population²	2811	3122	3488	2678	2632	2826	*	*

¹Total includes cases where sex is not reported

²Denominator = Statistics New Zealand mid-year population estimates

*Incomplete data