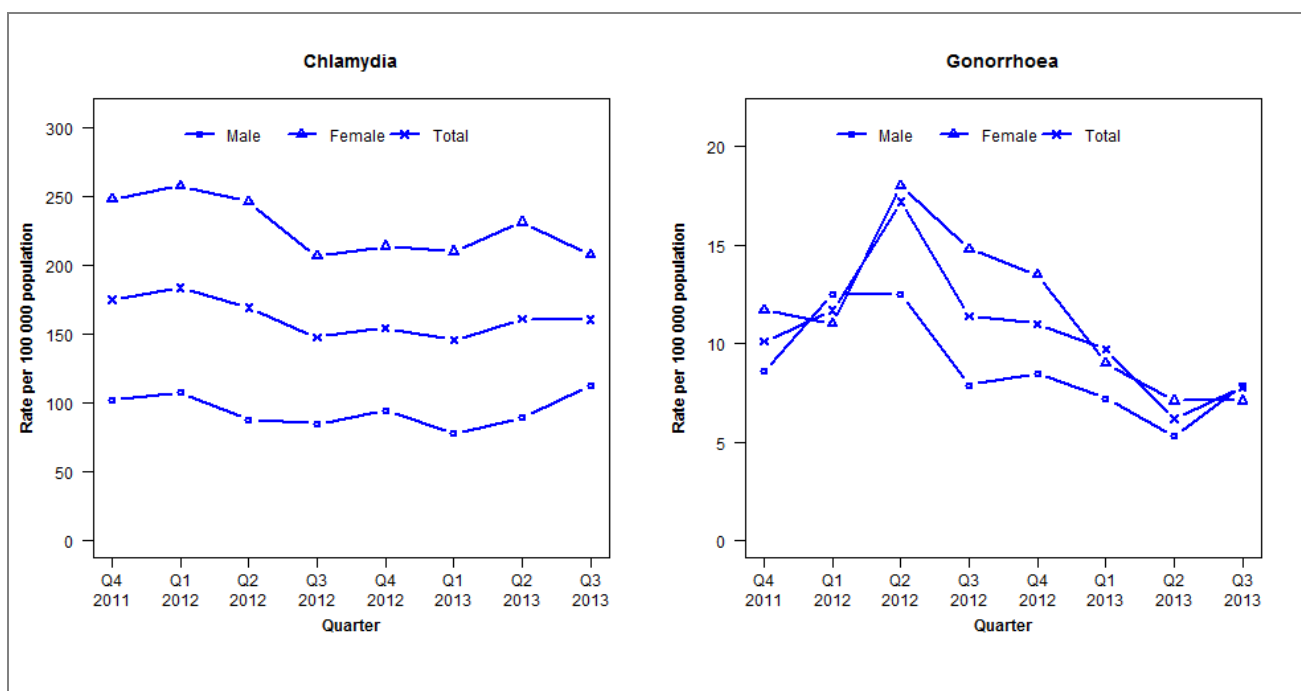


## Laboratory surveillance of chlamydia and gonorrhoea: July - September 2013

### Quarterly chlamydia and gonorrhoea rates (female, male and total population), Oct 2011 to Sep 2013



Denominator = Statistics New Zealand mid-year population estimates

Note: New data processing procedures from Q1 2013 may have impacted slightly on the counts and rates produced. NAAT for gonorrhoea testing introduced in Q4 2011

### Number of lab confirmed chlamydia cases (female, male and total population) and number of tests per 100 000 population, October 2011 to September 2013

	Q4 2011	Q1 2012	Q2 2012	Q3 2012	Q4 2012	Q1 2013	Q2 2013	Q3 2013
<b>Number of lab-confirmed cases<sup>1</sup></b>	537	566	521	455	476	448	496	495
<i>Female</i>	383	400	382	321	332	326	359	322
<i>Male</i>	154	164	134	129	144	118	136	171
<b>Tests per 100 000 population<sup>2</sup></b>	2203	2353	2235	2302	2172	2213	2378	2483

<sup>1</sup>Total includes cases where sex is not reported

<sup>2</sup>Denominator = Statistics New Zealand mid-year population estimates

### Number of lab confirmed gonorrhoea cases (female, male and total population) and number of tests per 100 000 population, October 2011 to September 2013

	Q4 2011	Q1 2012	Q2 2012	Q3 2012	Q4 2012	Q1 2013	Q2 2013	Q3 2013
<b>Number of lab-confirmed cases<sup>1</sup></b>	31	36	53	35	34	30	19	24
<i>Female</i>	18	17	28	23	21	14	11	11
<i>Male</i>	13	19	19	12	13	11	8	12
<b>Tests per 100 000 population<sup>2</sup></b>	1873	2360	2234	2302	2172	2305	2464	2565

<sup>1</sup>Total includes cases where sex is not reported

<sup>2</sup>Denominator = Statistics New Zealand mid-year population estimates