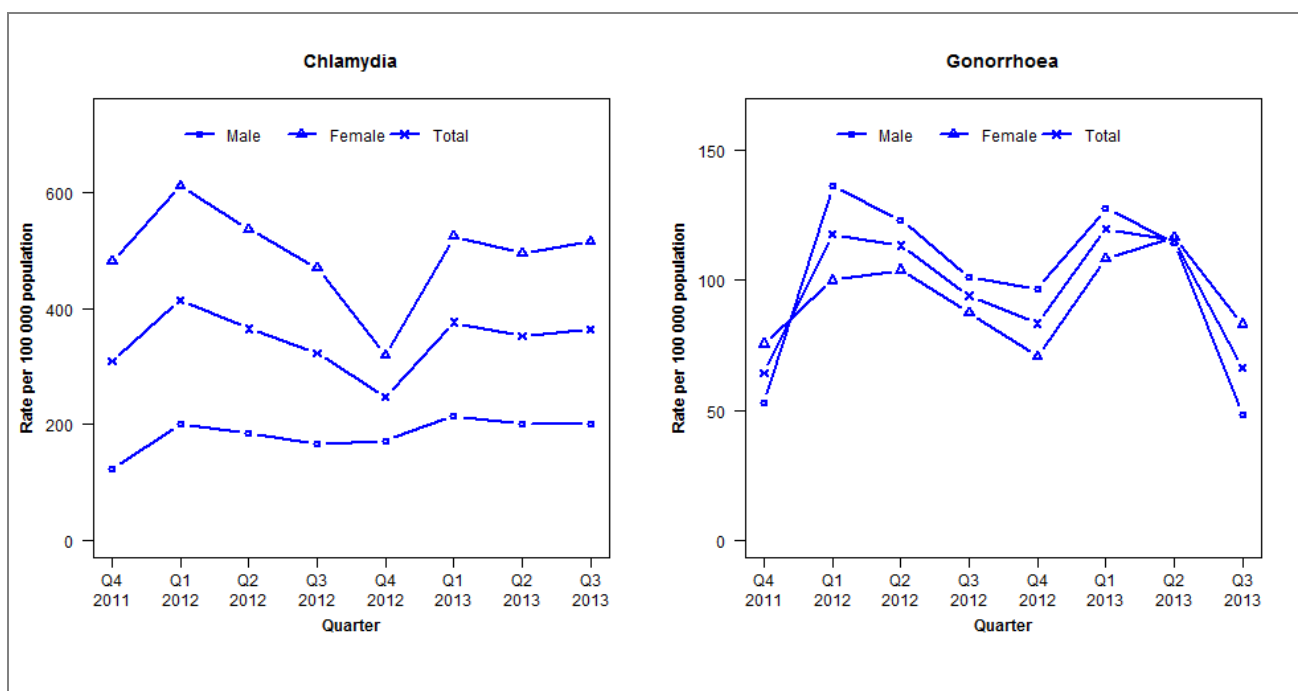


Laboratory surveillance of chlamydia and gonorrhoea: July - September 2013

Quarterly chlamydia and gonorrhoea rates (female, male and total population), Oct 2011 to Sep 2013



Denominator = Statistics New Zealand mid-year population estimates

Note: New data processing procedures from Q1 2013 may have impacted slightly on the counts and rates produced. NAAT (nucleic acid amplification testing) for gonorrhoea testing introduced in Q4 2012.

Number of lab confirmed chlamydia cases (female, male and total population) and number of tests per 100 000 population, October 2011 to September 2013

	Q4 2011	Q1 2012	Q2 2012	Q3 2012	Q4 2012	Q1 2013	Q2 2013	Q3 2013
Number of lab-confirmed cases¹	144	194	171	151	116	176	165	170
<i>Female</i>	115	147	129	113	77	126	119	124
<i>Male</i>	28	46	42	38	39	49	46	46
Tests per 100 000 population²	2373	2573	2528	2491	2451	2517	2419	2524

¹Total includes cases where sex is not reported

²Denominator = Statistics New Zealand mid-year population estimates

Number of lab confirmed gonorrhoea cases (female, male and total population) and number of tests per 100 000 population, October 2011 to September 2013

	Q4 2011	Q1 2012	Q2 2012	Q3 2012	Q4 2012	Q1 2013	Q2 2013	Q3 2013
Number of lab-confirmed cases¹	30	55	53	44	39	56	54	31
<i>Female</i>	18	24	25	21	17	26	28	20
<i>Male</i>	12	31	28	23	22	29	26	11
Tests per 100 000 population²	2152	2265	2316	2459	2553	2372	2389	2498

¹Total includes cases where sex is not reported

²Denominator = Statistics New Zealand mid-year population estimates