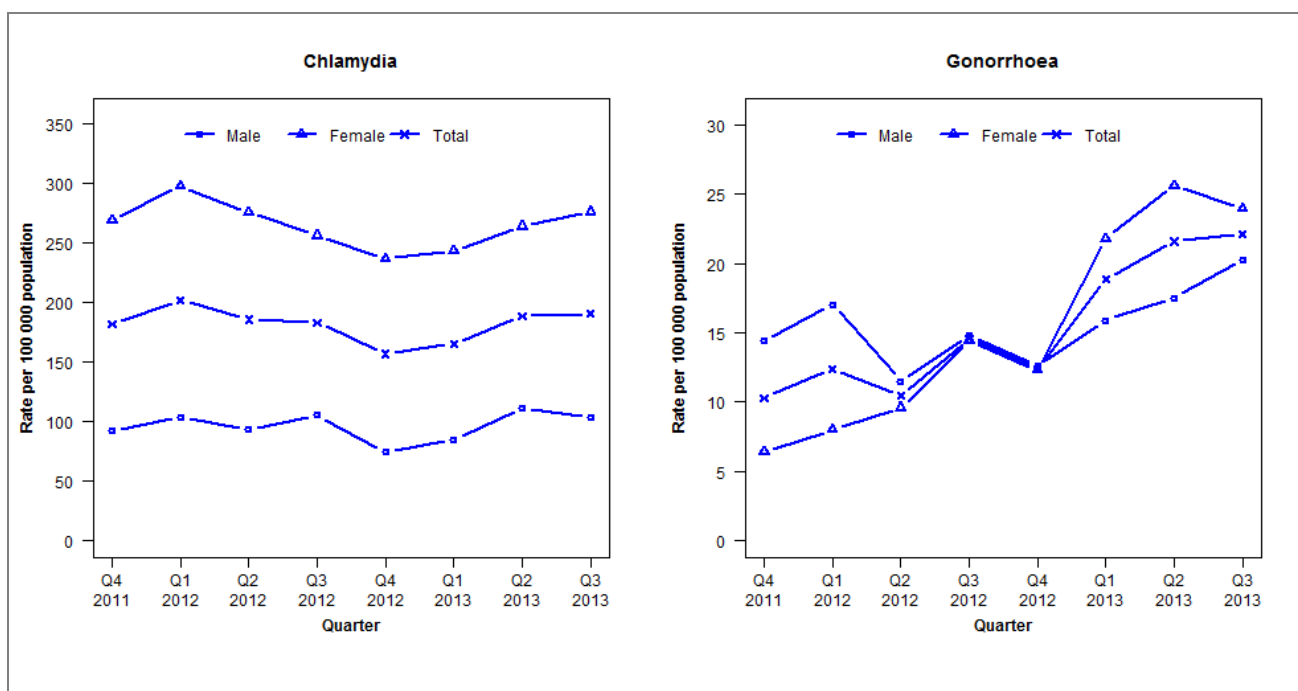


Laboratory surveillance of chlamydia and gonorrhoea: July - September 2013

Quarterly chlamydia and gonorrhoea rates (female, male and total population), Oct 2011 to Sep 2013



Denominator = Statistics New Zealand mid-year population estimates

Note: New data processing procedures from Q1 2013 may have impacted slightly on the counts and rates produced. NAAT (nucleic acid amplification testing) for gonorrhoea testing introduced in Q4 2012.

Number of lab confirmed chlamydia cases (female, male and total population) and number of tests per 100 000 population, October 2011 to September 2013

	Q4 2011	Q1 2012	Q2 2012	Q3 2012	Q4 2012	Q1 2013	Q2 2013	Q3 2013
Number of lab-confirmed cases¹	668	748	687	677	581	612	697	707
<i>Female</i>	501	559	517	481	444	457	495	518
<i>Male</i>	167	189	170	192	136	155	202	189
Tests per 100 000 population²	1894	2039	1953	2011	1849	1996	2013	2178

¹Total includes cases where sex is not reported

²Denominator = Statistics New Zealand mid-year population estimates

Number of lab confirmed gonorrhoea cases (female, male and total population) and number of tests per 100 000 population, October 2011 to September 2013

	Q4 2011	Q1 2012	Q2 2012	Q3 2012	Q4 2012	Q1 2013	Q2 2013	Q3 2013
Number of lab-confirmed cases¹	38	46	39	54	46	70	80	82
<i>Female</i>	12	15	18	27	23	41	48	45
<i>Male</i>	26	31	21	27	23	29	32	37
Tests per 100 000 population²	1684	1836	1720	1800	2092	2649	2597	2919

¹Total includes cases where sex is not reported

²Denominator = Statistics New Zealand mid-year population estimates