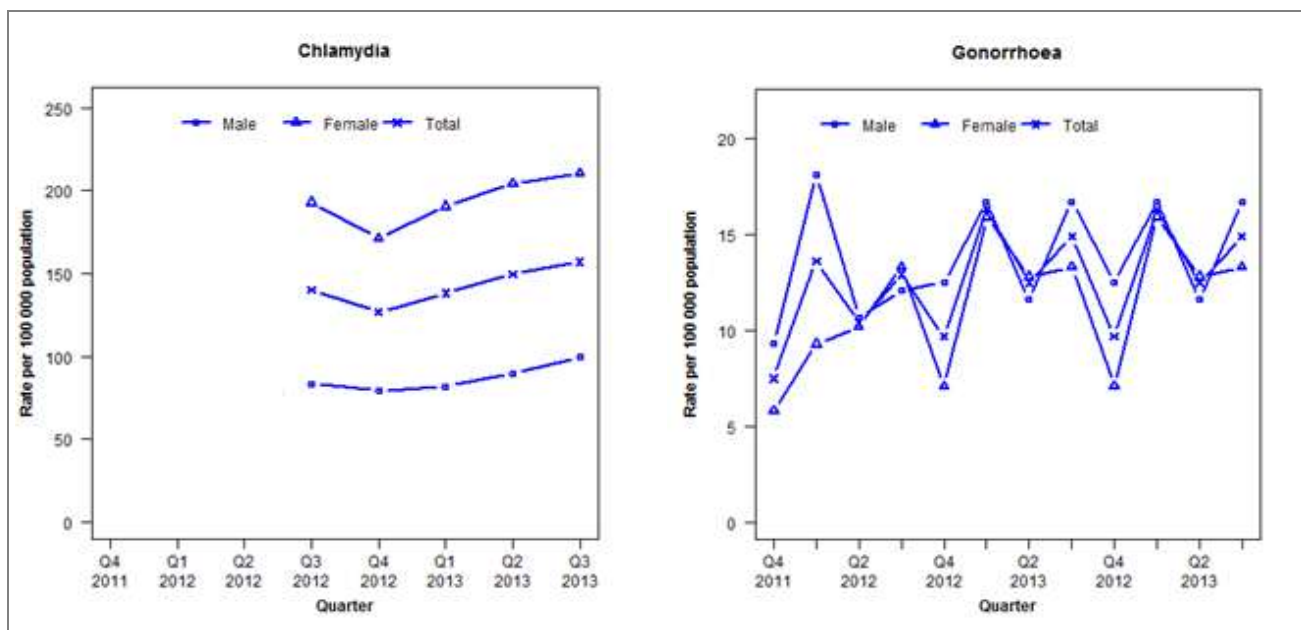


Laboratory surveillance of chlamydia and gonorrhoea: July - September 2013

Quarterly chlamydia and gonorrhoea rates (female, male and total population), Oct 2011 to Sep 2013



Denominator = Statistics New Zealand mid-year population estimates

Note: New data processing procedures from Q1 2013 may have impacted slightly on the counts and rates produced. Chlamydia data only available from Q3 2012. NAAT (nucleic acid amplification testing) for gonorrhoea testing introduced during Q2 2012.

Number of lab confirmed chlamydia cases (female, male and total population) and number of tests per 100 000 population, October 2011 to September 2013

	Q4 2011	Q1 2012	Q2 2012	Q3 2012	Q4 2012	Q1 2013	Q2 2013	Q3 2013
Number of lab-confirmed cases¹	-	-	-	618	560	611	661	694
<i>Female</i>	-	-	-	435	387	430	461	475
<i>Male</i>	-	-	-	180	171	177	193	215
Tests per 100 000 population²	-	-	-	2347	2179	2280	2280	2449

¹Total includes cases where sex is not reported²Denominator = Statistics New Zealand mid-year population estimates

Number of lab confirmed gonorrhoea cases (female, male and total population) and number of tests per 100 000 population, October 2011 to September 2013

	Q4 2011	Q1 2012	Q2 2012	Q3 2012	Q4 2012	Q1 2013	Q2 2013	Q3 2013
Number of lab-confirmed cases¹	33	60	46	57	43	72	55	66
<i>Female</i>	13	21	23	30	16	36	29	30
<i>Male</i>	20	39	23	26	27	36	25	36
Tests per 100 000 population²	1587	1755	2060	2339	2173	2274	2276	2428

¹Total includes cases where sex is not reported²Denominator = Statistics New Zealand mid-year population estimates