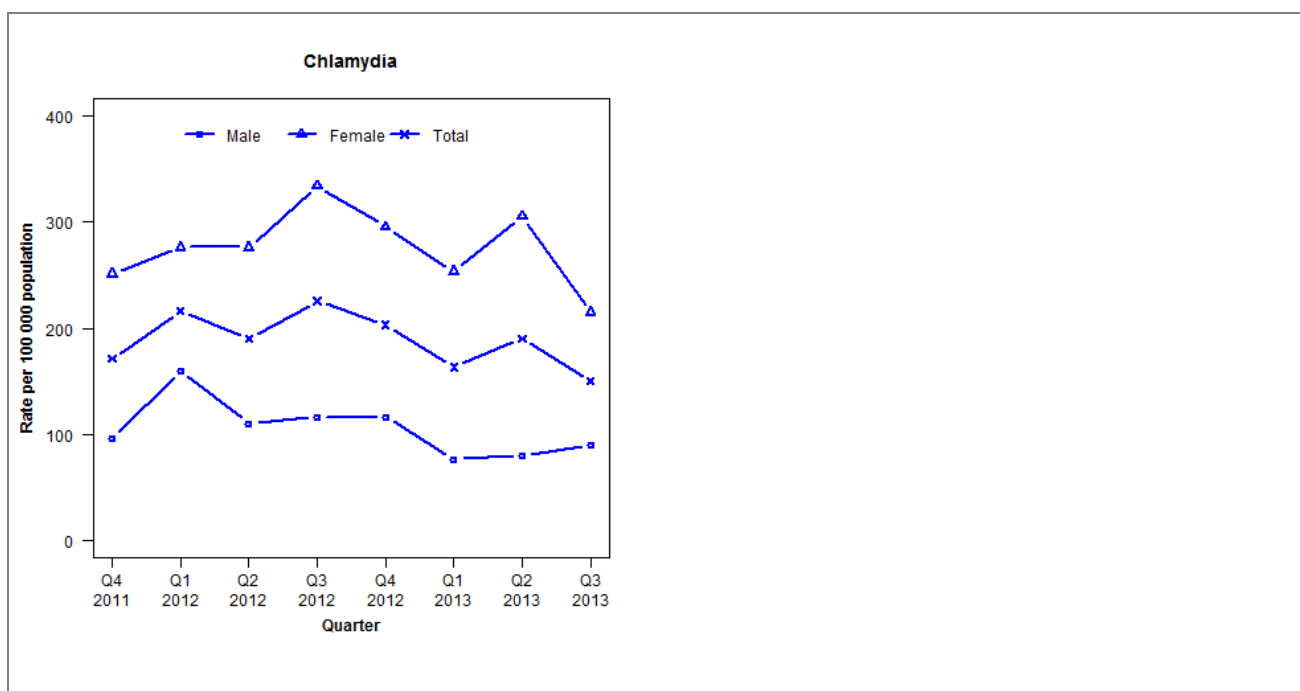


Laboratory surveillance of chlamydia and gonorrhoea: July - September 2013

Quarterly chlamydia and gonorrhoea rates (female, male and total population), Oct 2011 to Sep 2013



Denominator = Statistics New Zealand mid-year population estimates

Note: New data processing procedures from Q1 2013 may have impacted slightly on the counts and rates produced. Gonorrhoea rates are not presented as there are fewer than five cases in many quarters.

Number of lab confirmed chlamydia cases (female, male and total population) and number of tests per 100 000 population, October 2011 to September 2013

	Q4 2011	Q1 2012	Q2 2012	Q3 2012	Q4 2012	Q1 2013	Q2 2013	Q3 2013
Number of lab-confirmed cases¹	108	135	119	141	127	102	119	94
<i>Female</i>	79	86	86	104	92	79	95	67
<i>Male</i>	29	48	33	35	35	23	24	27
Tests per 100 000 population²	1574	1736	1578	1800	1591	1608	1584	1634

¹Total includes cases where sex is not reported

²Denominator = Statistics New Zealand mid-year population estimates

Number of lab confirmed gonorrhoea cases (female, male and total population) and number of tests per 100 000 population, October 2011 to September 2013

	Q4 2011	Q1 2012	Q2 2012	Q3 2012	Q4 2012	Q1 2013	Q2 2013	Q3 2013
Number of lab-confirmed cases¹	15	12	12	8	6	8	5	2
<i>Female</i>	5	4	3	1	1	3	1	0
<i>Male</i>	10	8	9	7	5	5	4	2
Tests per 100 000 population²	1048	1053	1091	1205	1043	1082	1035	1039

¹Total includes cases where sex is not reported

²Denominator = Statistics New Zealand mid-year population estimates