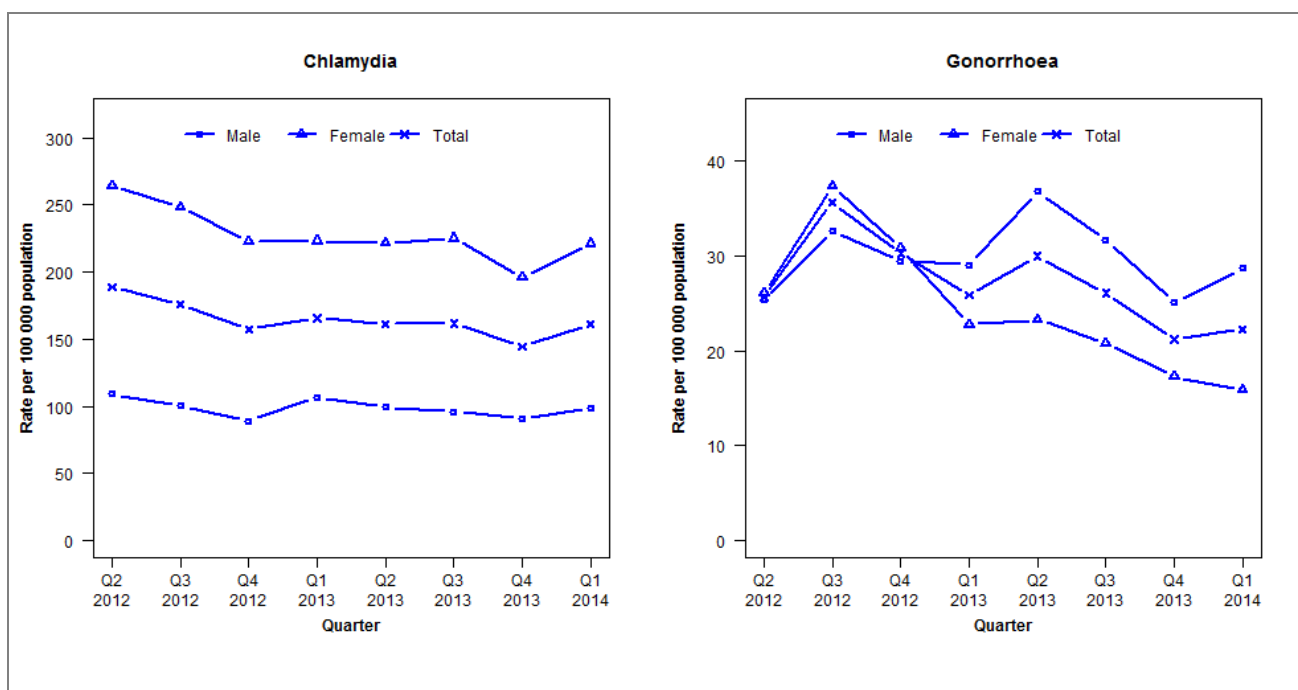


Laboratory surveillance of chlamydia and gonorrhoea: January - March 2014

Quarterly chlamydia and gonorrhoea rates (female, male and total population), Apr 2012 to Mar 2014



Denominator = Statistics New Zealand mid-year population estimates

Note: New data processing methods introduced from Q1 2013 allow for exclusion of repeat tests. Routine use of NAAT for gonorrhoea testing introduced by LabPlus in April 2011 and Labtests in March 2012. Data not received from Waitemata DHB since Q1 2013.

Number of lab confirmed chlamydia cases (female, male and total population) and number of tests per 100 000 population, April 2012 to March 2014

	Q2 2012	Q3 2012	Q4 2012	Q1 2013	Q2 2013	Q3 2013	Q4 2013	Q1 2014
Number of lab-confirmed cases¹	2875	2678	2395	2563	2497	2499	2234	2492
<i>Female</i>	2046	1922	1728	1751	1740	1768	1539	1737
<i>Male</i>	818	752	667	811	755	731	693	750
Tests per 100 000 population²	2469	2486	2337	2399	2441	2554	2366	2530

¹Total includes cases where sex is not reported²Denominator = Statistics New Zealand mid-year population estimates

Number of lab confirmed gonorrhoea cases (female, male and total population) and number of tests per 100 000 population, April 2012 to March 2014

	Q2 2012	Q3 2012	Q4 2012	Q1 2013	Q2 2013	Q3 2013	Q4 2013	Q1 2014
Number of lab-confirmed cases¹	392	544	461	400	464	404	328	345
<i>Female</i>	202	290	239	179	183	163	136	125
<i>Male</i>	190	245	221	221	280	241	191	218
Tests per 100 000 population²	3714	3576	2506	2741	2799	2877	2648	2837

¹Total includes cases where sex is not reported²Denominator = Statistics New Zealand mid-year population estimates