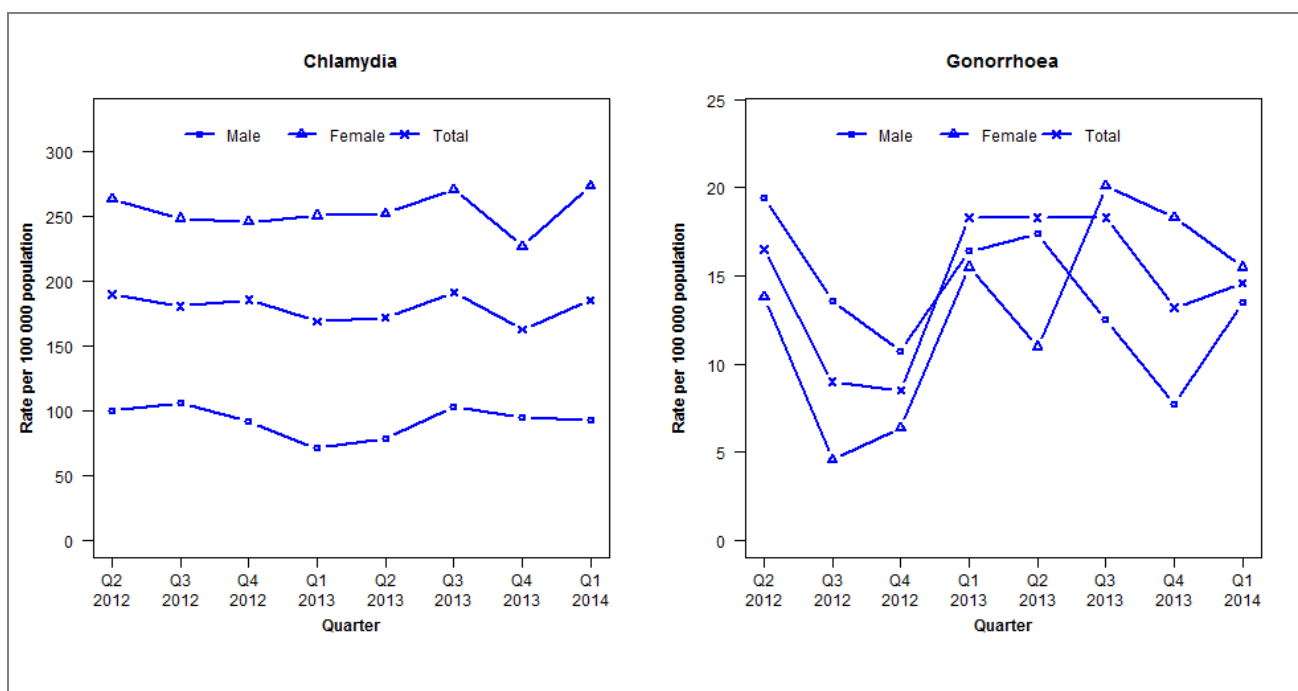


Laboratory surveillance of chlamydia and gonorrhoea: January - March 2014

Quarterly chlamydia and gonorrhoea rates (female, male and total population), Apr 2012 to Mar 2014



Denominator = Statistics New Zealand mid-year population estimates

Note: New data processing methods introduced from Q1 2013 allow for exclusion of repeat tests. NAAT (nucleic acid amplification testing) for gonorrhoea testing introduced in Q3 2013.

Number of lab confirmed chlamydia cases (female, male and total population) and number of tests per 100 000 population, April 2012 to March 2014

	Q2 2012	Q3 2012	Q4 2012	Q1 2013	Q2 2013	Q3 2013	Q4 2013	Q1 2014
Number of lab-confirmed cases¹	403	383	394	360	366	407	347	395
<i>Female</i>	286	270	267	274	276	296	248	299
<i>Male</i>	103	110	95	74	82	107	99	96
Tests per 100 000 population²	2010	2052	2013	1931	1977	2028	2004	2162

¹Total includes cases where sex is not reported

²Denominator = Statistics New Zealand mid-year population estimates

Number of lab confirmed gonorrhoea cases (female, male and total population) and number of tests per 100 000 population, April 2012 to March 2014

	Q2 2012	Q3 2012	Q4 2012	Q1 2013	Q2 2013	Q3 2013	Q4 2013	Q1 2014
Number of lab-confirmed cases¹	35	19	18	39	39	39	28	31
<i>Female</i>	15	5	7	17	12	22	20	17
<i>Male</i>	20	14	11	17	18	13	8	14
Tests per 100 000 population²	1518	1518	1464	1374	1393	2012	2154	2219

¹Total includes cases where sex is not reported

²Denominator = Statistics New Zealand mid-year population estimates