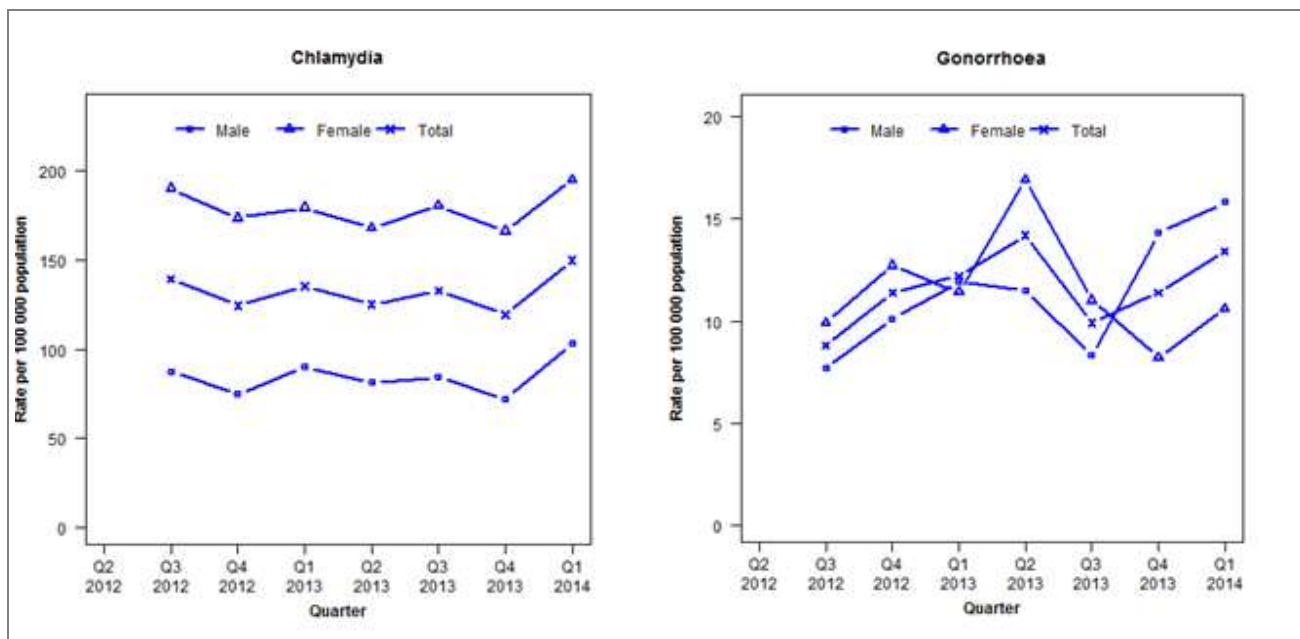


Laboratory surveillance of chlamydia and gonorrhoea: January - March 2014

Quarterly chlamydia and gonorrhoea rates (female, male and total population), Apr 2012 to Mar 2014



Denominator = Statistics New Zealand mid-year population estimates

Note: New data processing methods introduced from Q1 2013 allow for exclusion of repeat tests. Data from all labs in Canterbury DHB only available from Q3 2012

Number of lab confirmed chlamydia cases (female, male and total population) and number of tests per 100 000 population, April 2012 to March 2014

	Q2 2012	Q3 2012	Q4 2012	Q1 2013	Q2 2013	Q3 2013	Q4 2013	Q1 2014
Number of lab-confirmed cases¹	-	697	623	686	635	674	606	760
<i>Female</i>	-	480	438	457	429	460	424	497
<i>Male</i>	-	217	185	227	205	213	182	260
Tests per 100 000 population²	-	1987	1916	2063	2096	2108	1977	2151

¹Total includes cases where sex is not reported

²Denominator = Statistics New Zealand mid-year population estimates

Number of lab confirmed gonorrhoea cases (female, male and total population) and number of tests per 100 000 population, April 2012 to March 2014

	Q2 2012	Q3 2012	Q4 2012	Q1 2013	Q2 2013	Q3 2013	Q4 2013	Q1 2014
Number of lab-confirmed cases¹	-	44	57	62	72	50	58	68
<i>Female</i>	-	25	32	29	43	28	21	27
<i>Male</i>	-	19	25	30	29	21	36	40
Tests per 100 000 population²	-	1987	1916	2665	3007	2994	2687	2890

¹Total includes cases where sex is not reported

²Denominator = Statistics New Zealand mid-year population estimates