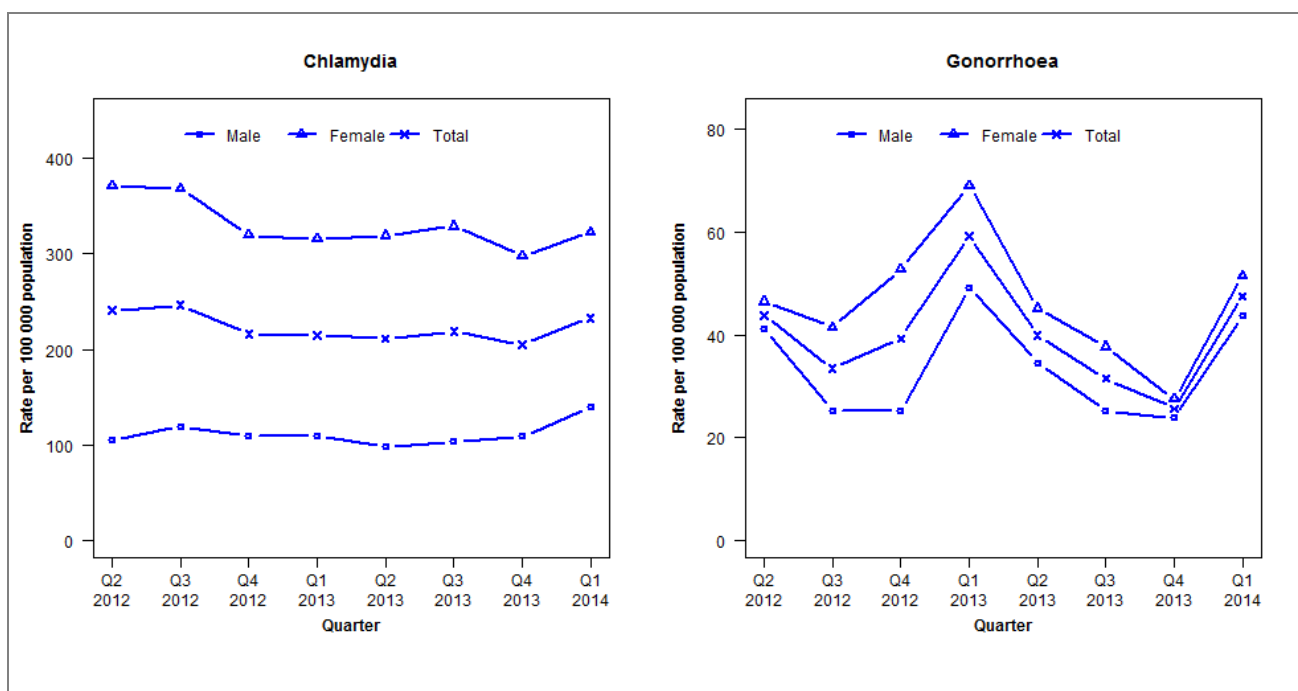


Laboratory surveillance of chlamydia and gonorrhoea: January - March 2014

Quarterly chlamydia and gonorrhoea rates (female, male and total population), Apr 2012 to Mar 2014



Denominator = Statistics New Zealand mid-year population estimates

Note: New data processing methods introduced from Q1 2013 allow for exclusion of repeat tests.

Number of lab confirmed chlamydia cases (female, male and total population) and number of tests per 100 000 population, April 2012 to March 2014

	Q2 2012	Q3 2012	Q4 2012	Q1 2013	Q2 2013	Q3 2013	Q4 2013	Q1 2014
Number of lab-confirmed cases¹	374	383	336	334	328	340	319	362
<i>Female</i>	295	293	254	251	254	262	237	257
<i>Male</i>	79	90	82	82	74	78	82	105
Tests per 100 000 population²	1856	1949	1849	1913	1935	2071	1922	1989

¹Total includes cases where sex is not reported

²Denominator = Statistics New Zealand mid-year population estimates

Number of lab confirmed gonorrhoea cases (female, male and total population) and number of tests per 100 000 population, April 2012 to March 2014

	Q2 2012	Q3 2012	Q4 2012	Q1 2013	Q2 2013	Q3 2013	Q4 2013	Q1 2014
Number of lab-confirmed cases¹	68	52	61	92	62	49	40	74
<i>Female</i>	37	33	42	55	36	30	22	41
<i>Male</i>	31	19	19	37	26	19	18	33
Tests per 100 000 population²	1856	1949	1849	2389	2381	2496	2308	2368

¹Total includes cases where sex is not reported

²Denominator = Statistics New Zealand mid-year population estimates