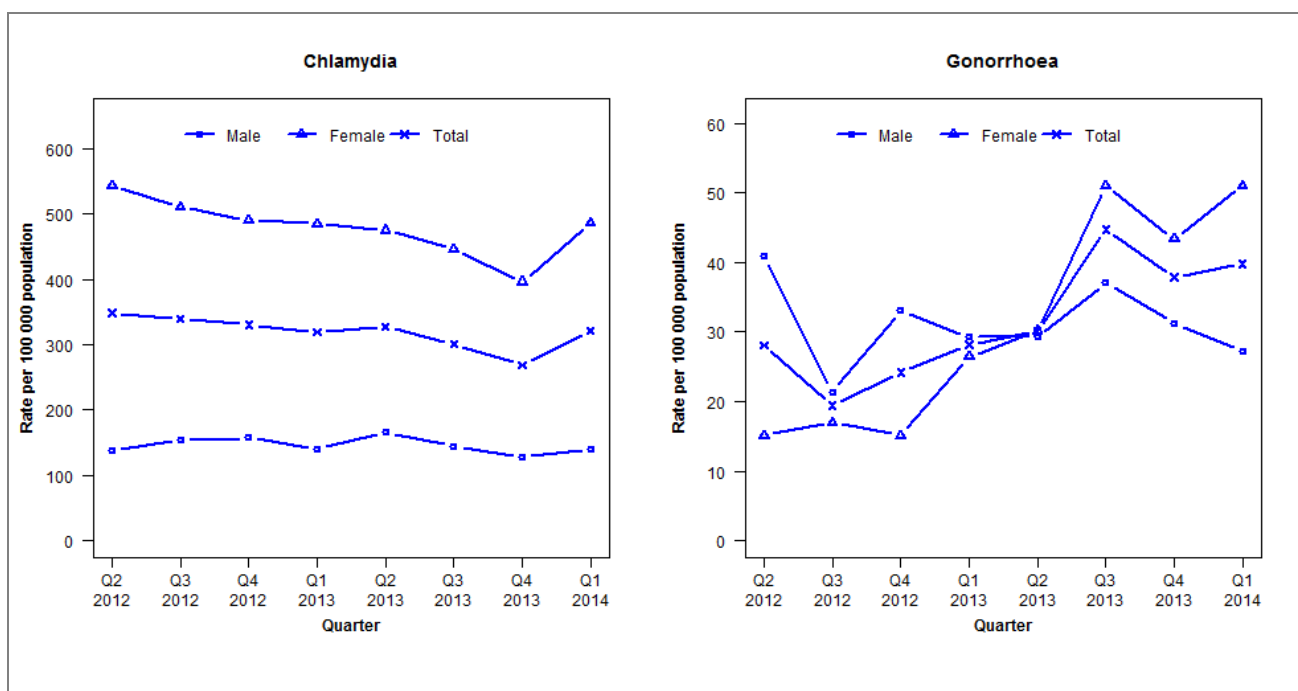


Laboratory surveillance of chlamydia and gonorrhoea: January - March 2014

Quarterly chlamydia and gonorrhoea rates (female, male and total population), Apr 2012 to Mar 2014



Denominator = Statistics New Zealand mid-year population estimates

Note: New data processing methods introduced from Q1 2013 allow for exclusion of repeat tests. NAAT Gonorrhoea testing introduced for Pathlab Rotorua 1 July 2013.

Number of lab confirmed chlamydia cases (female, male and total population) and number of tests per 100 000 population, April 2012 to March 2014

	Q2 2012	Q3 2012	Q4 2012	Q1 2013	Q2 2013	Q3 2013	Q4 2013	Q1 2014
Number of lab-confirmed cases¹	360	350	341	329	337	310	277	331
<i>Female</i>	288	271	260	257	252	236	210	258
<i>Male</i>	71	79	81	72	85	74	66	72
Tests per 100 000 population²	2697	2806	2632	2838	2908	2834	2633	2867

¹Total includes cases where sex is not reported

²Denominator = Statistics New Zealand mid-year population estimates

Number of lab confirmed gonorrhoea cases (female, male and total population) and number of tests per 100 000 population, April 2012 to March 2014

	Q2 2012	Q3 2012	Q4 2012	Q1 2013	Q2 2013	Q3 2013	Q4 2013	Q1 2014
Number of lab-confirmed cases¹	29	20	25	29	31	46	39	41
<i>Female</i>	8	9	8	14	16	27	23	27
<i>Male</i>	21	11	17	15	15	19	16	14
Tests per 100 000 population²	2150	2176	1925	2098	2114	3084	2720	2908

¹Total includes cases where sex is not reported

²Denominator = Statistics New Zealand mid-year population estimates