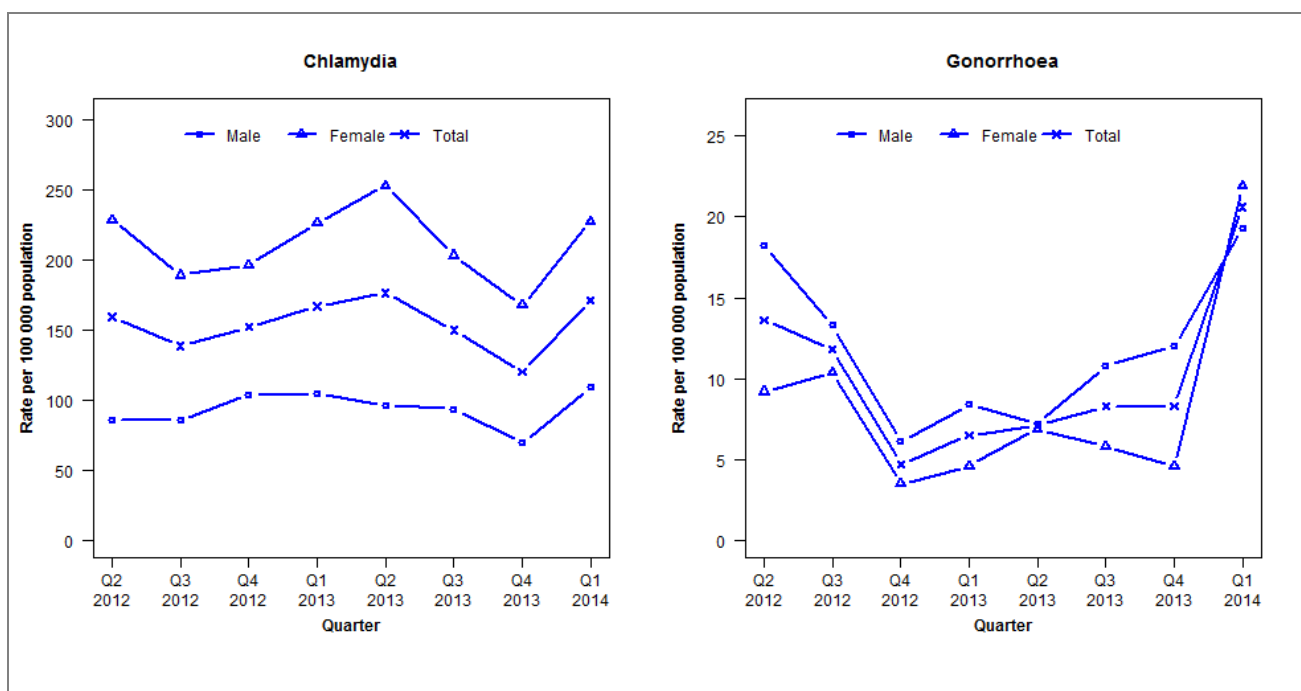


Laboratory surveillance of chlamydia and gonorrhoea: January - March 2014

Quarterly chlamydia and gonorrhoea rates (female, male and total population), Apr 2012 to Mar 2014



Denominator = Statistics New Zealand mid-year population estimates

Note: New data processing procedures from Q1 2013 may have impacted slightly on the counts and rates produced. NAAT testing introduced in Q1 2014

Number of lab confirmed chlamydia cases (female, male and total population) and number of tests per 100 000 population, April 2012 to March 2014

	Q2 2012	Q3 2012	Q4 2012	Q1 2013	Q2 2013	Q3 2013	Q4 2013	Q1 2014
Number of lab-confirmed cases¹	270	235	258	284	300	255	205	291
<i>Female</i>	198	164	170	197	220	177	146	198
<i>Male</i>	71	71	86	87	80	78	58	91
Tests per 100 000 population²	1593	1678	1685	1676	1754	1739	1566	1692

¹Total includes cases where sex is not reported

²Denominator = Statistics New Zealand mid-year population estimates

Number of lab confirmed gonorrhoea cases (female, male and total population) and number of tests per 100 000 population, April 2012 to March 2014

	Q2 2012	Q3 2012	Q4 2012	Q1 2013	Q2 2013	Q3 2013	Q4 2013	Q1 2014
Number of lab-confirmed cases¹	23	20	8	11	12	14	14	35
<i>Female</i>	8	9	3	4	6	5	4	19
<i>Male</i>	15	11	5	7	6	9	10	16
Tests per 100 000 population²	1371	1423	1459	1444	1476	1456	1277	1597

¹Total includes cases where sex is not reported

²Denominator = Statistics New Zealand mid-year population estimates