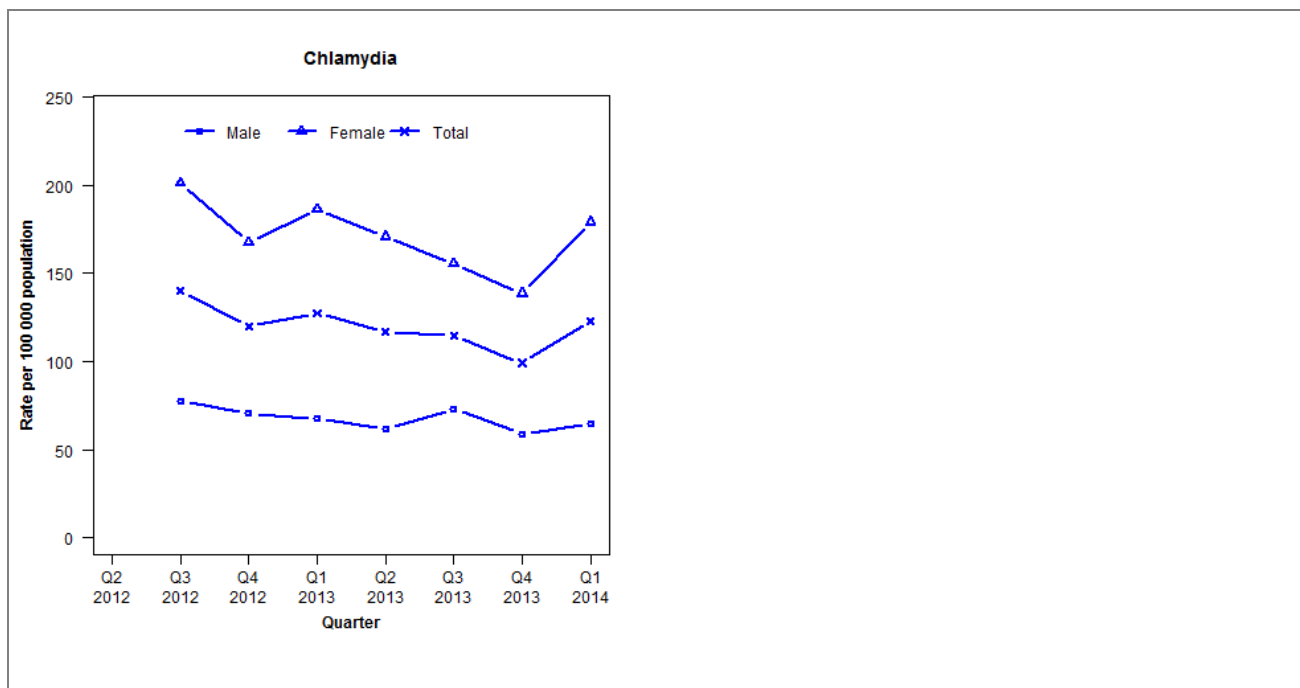


Laboratory surveillance of chlamydia and gonorrhoea: January - March 2014

Quarterly chlamydia and gonorrhoea rates (female, male and total population), Apr 2012 to Mar 2014



Denominator = Statistics New Zealand mid-year population estimates

Note: New data processing methods introduced from Q1 2013 allow for exclusion of repeat tests. Data only available for Nelson Marlborough DHB from Q3 2012. Gonorrhoea rates are not presented as there are fewer than five cases in many quarters.

Number of lab confirmed chlamydia cases (female, male and total population) and number of tests per 100 000 population, April 2012 to March 2014

	Q2 2012	Q3 2012	Q4 2012	Q1 2013	Q2 2013	Q3 2013	Q4 2013	Q1 2014
Number of lab-confirmed cases¹	-	197	169	180	165	162	140	174
<i>Female</i>	-	143	119	133	122	111	99	128
<i>Male</i>	-	54	49	47	43	51	41	45
Tests per 100 000 population²	-	527	1631	1719	1610	1677	1518	1704

¹Total includes cases where sex is not reported

²Denominator = Statistics New Zealand mid-year population estimates

Number of lab confirmed gonorrhoea cases (female, male and total population) and number of tests per 100 000 population, April 2012 to March 2014

	Q2 2012	Q3 2012	Q4 2012	Q1 2013	Q2 2013	Q3 2013	Q4 2013	Q1 2014
Number of lab-confirmed cases¹	-	13	10	1	7	4	5	6
<i>Female</i>	-	8	3	1	1	2	1	1
<i>Male</i>	-	5	7	0	6	2	4	5
Tests per 100 000 population²	-	527	1631	3472	3265	3318	3047	3224

¹Total includes cases where sex is not reported

²Denominator = Statistics New Zealand mid-year population estimates