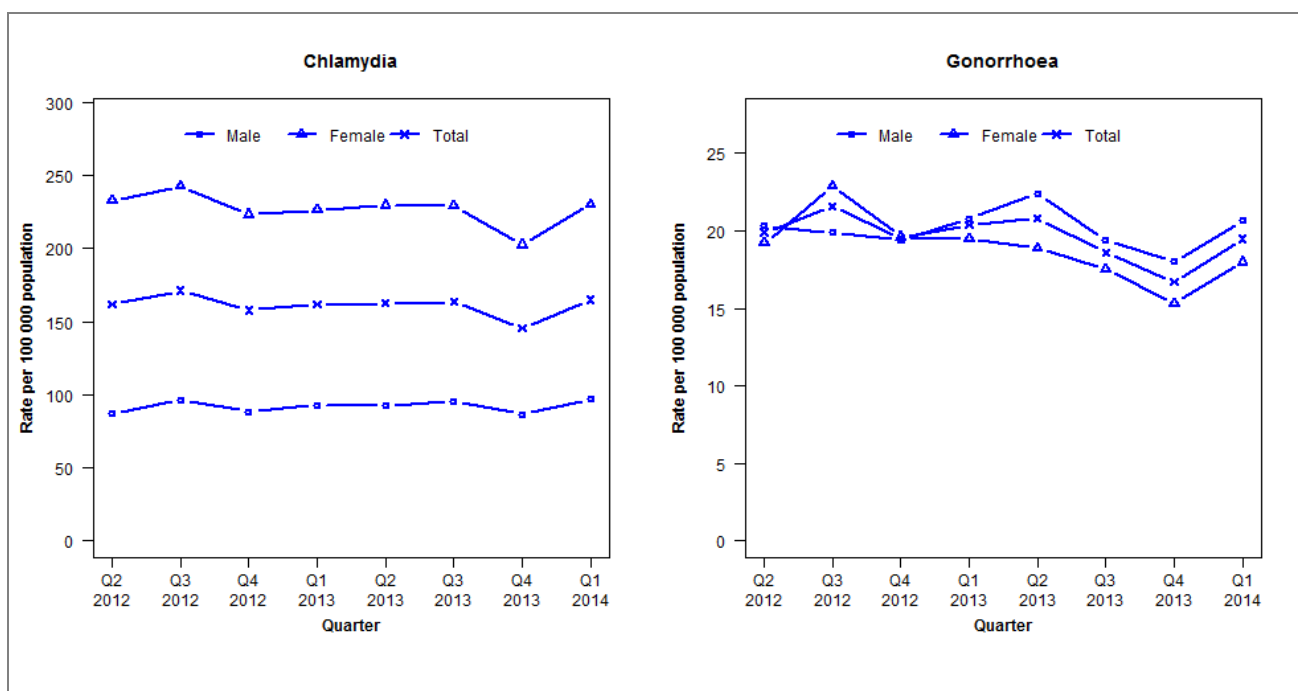


Laboratory surveillance of chlamydia and gonorrhoea: January - March 2014

Quarterly chlamydia and gonorrhoea rates (female, male and total population), Apr 2012 to Mar 2014



Denominator = Statistics New Zealand mid-year population estimates

Note: New data processing methods introduced from Q1 2013 allow for exclusion of repeat tests. NAAT (nucleic acid amplification testing) for gonorrhoea has been introduced in some laboratories since Q4 2011. Refer to DHB level reports for further details. Data incomplete from Q2 2013 for Northland DHB. Data not received from Waitemata DHB since Q1 2013. Data not available for NMDHB and SCDHB before Q3 2012 and testing data incomplete for Q3 NMDHB and SCDHB.

Number of lab confirmed chlamydia cases (female, male and total population) and number of tests per 100 000 population, April 2012 to March 2014

	Q2 2012	Q3 2012	Q4 2012	Q1 2013	Q2 2013	Q3 2013	Q4 2013	Q1 2014
Number of lab-confirmed cases¹	6847	7592	6999	7224	7268	7309	6515	7379
<i>Female</i>	5008	5469	5030	5142	5215	5199	4600	5231
<i>Male</i>	1806	2098	1925	2045	2029	2098	1903	2131
Tests per 100 000 population²	1884	2154	2086	2144	2173	2266	2106	2246

¹Total includes cases where sex is not reported

²Denominator = Statistics New Zealand mid-year population estimates

Number of lab confirmed gonorrhoea cases (female, male and total population) and number of tests per 100 000 population, April 2012 to March 2014

	Q2 2012	Q3 2012	Q4 2012	Q1 2013	Q2 2013	Q3 2013	Q4 2013	Q1 2014
Number of lab-confirmed cases¹	843	959	865	913	932	830	748	870
<i>Female</i>	414	515	442	442	429	397	347	408
<i>Male</i>	422	434	422	457	492	427	396	455
Tests per 100 000 population²	2536	2489	2145	2457	2477	2616	2393	2557

¹Total includes cases where sex is not reported

²Denominator = Statistics New Zealand mid-year population estimates