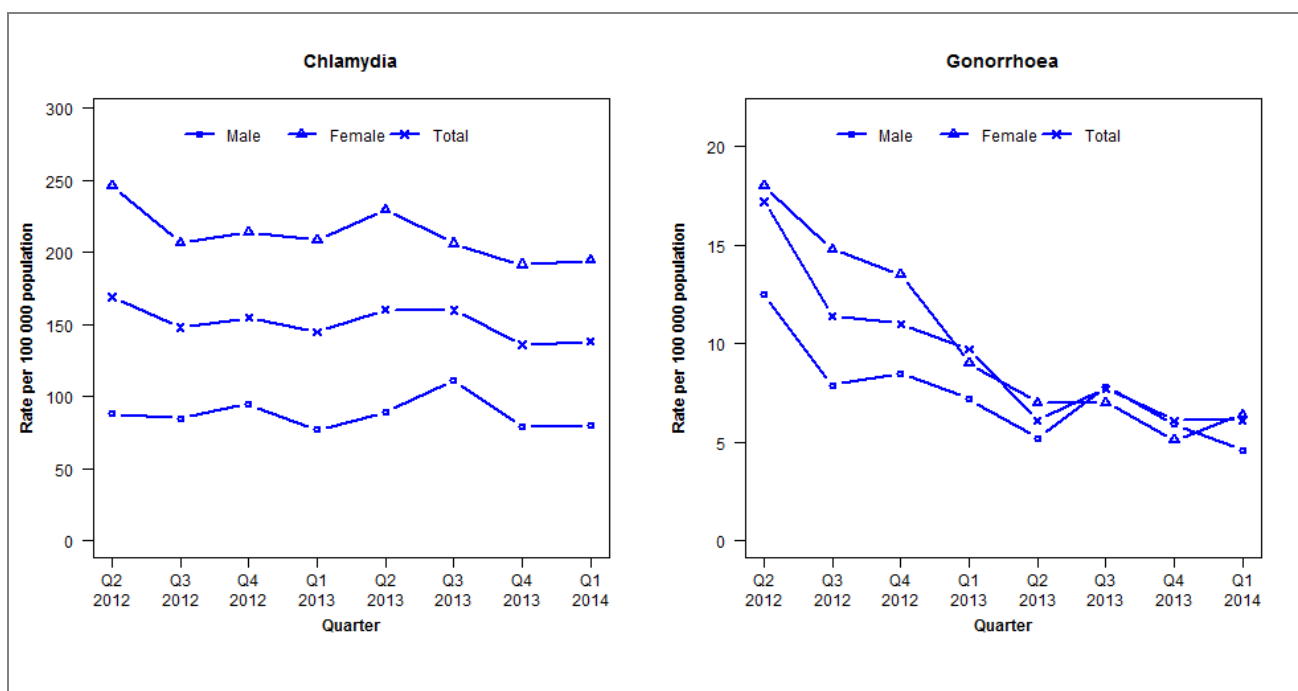


Laboratory surveillance of chlamydia and gonorrhoea: January - March 2014

Quarterly chlamydia and gonorrhoea rates (female, male and total population), Apr 2012 to Mar 2014



Denominator = Statistics New Zealand mid-year population estimates

Note: New data processing methods introduced from Q1 2013 allow for exclusion of repeat tests.

Number of lab confirmed chlamydia cases (female, male and total population) and number of tests per 100 000 population, April 2012 to March 2014

	Q2 2012	Q3 2012	Q4 2012	Q1 2013	Q2 2013	Q3 2013	Q4 2013	Q1 2014
Number of lab-confirmed cases¹	521	455	476	448	496	495	421	429
Female	382	321	332	326	359	322	299	304
Male	134	129	144	118	136	171	121	123
Tests per 100 000 population²	2235	2302	2172	2199	2363	2467	2169	2270

¹Total includes cases where sex is not reported

²Denominator = Statistics New Zealand mid-year population estimates

Number of lab confirmed gonorrhoea cases (female, male and total population) and number of tests per 100 000 population, April 2012 to March 2014

	Q2 2012	Q3 2012	Q4 2012	Q1 2013	Q2 2013	Q3 2013	Q4 2013	Q1 2014
Number of lab-confirmed cases¹	53	35	34	30	19	24	19	19
Female	28	23	21	14	11	11	8	10
Male	19	12	13	11	8	12	9	7
Tests per 100 000 population²	2234	2302	2172	2290	2448	2549	2232	2328

¹Total includes cases where sex is not reported

²Denominator = Statistics New Zealand mid-year population estimates