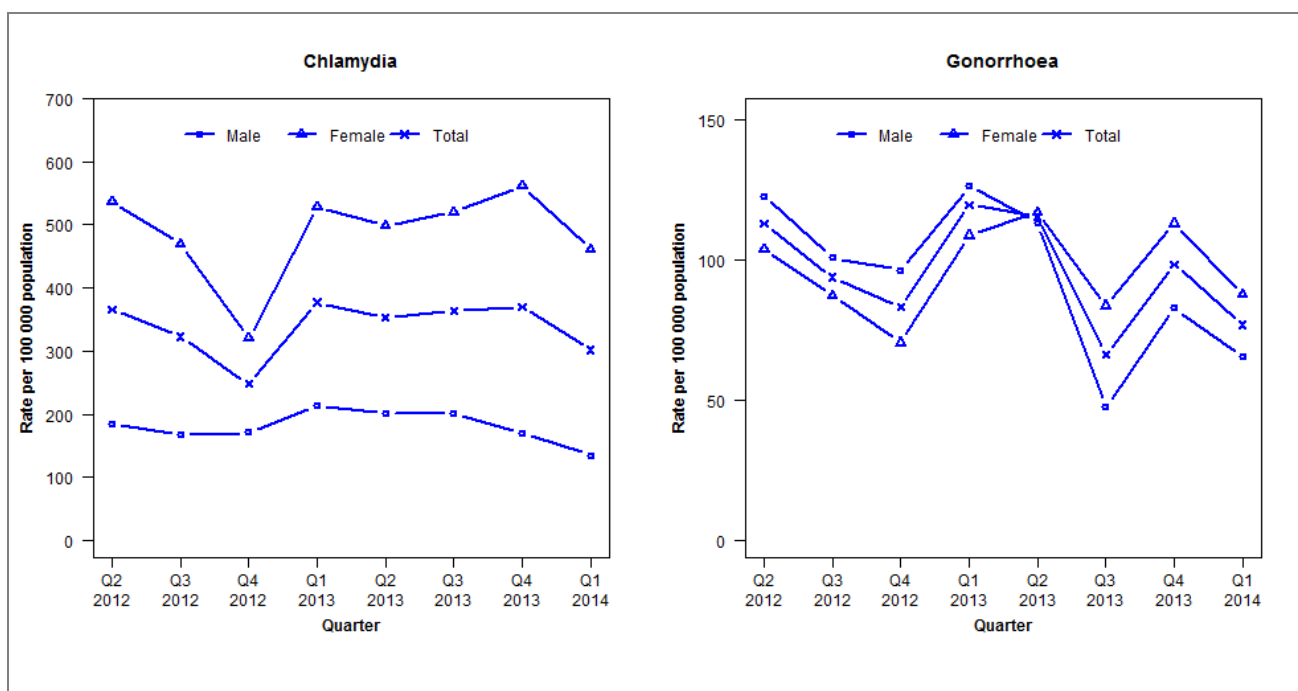


Laboratory surveillance of chlamydia and gonorrhoea: January - March 2014

Quarterly chlamydia and gonorrhoea rates (female, male and total population), Apr 2012 to Mar 2014



Denominator = Statistics New Zealand mid-year population estimates

Note: New data processing methods introduced from Q1 2013 allow for exclusion of repeat tests. NAAT (nucleic acid amplification testing) for gonorrhoea testing introduced in Q4 2012.

Number of lab confirmed chlamydia cases (female, male and total population) and number of tests per 100 000 population, April 2012 to March 2014

	Q2 2012	Q3 2012	Q4 2012	Q1 2013	Q2 2013	Q3 2013	Q4 2013	Q1 2014
Number of lab-confirmed cases¹	171	151	116	176	165	170	173	141
Female	129	113	77	126	119	124	134	110
Male	42	38	39	49	46	46	39	31
Tests per 100 000 population²	2528	2491	2451	2522	2424	2529	2484	2274

¹Total includes cases where sex is not reported

²Denominator = Statistics New Zealand mid-year population estimates

Number of lab confirmed gonorrhoea cases (female, male and total population) and number of tests per 100 000 population, April 2012 to March 2014

	Q2 2012	Q3 2012	Q4 2012	Q1 2013	Q2 2013	Q3 2013	Q4 2013	Q1 2014
Number of lab-confirmed cases¹	53	44	39	56	54	31	46	36
Female	25	21	17	26	28	20	27	21
Male	28	23	22	29	26	11	19	15
Tests per 100 000 population²	2316	2459	2553	2377	2394	2503	2358	2278

¹Total includes cases where sex is not reported

²Denominator = Statistics New Zealand mid-year population estimates