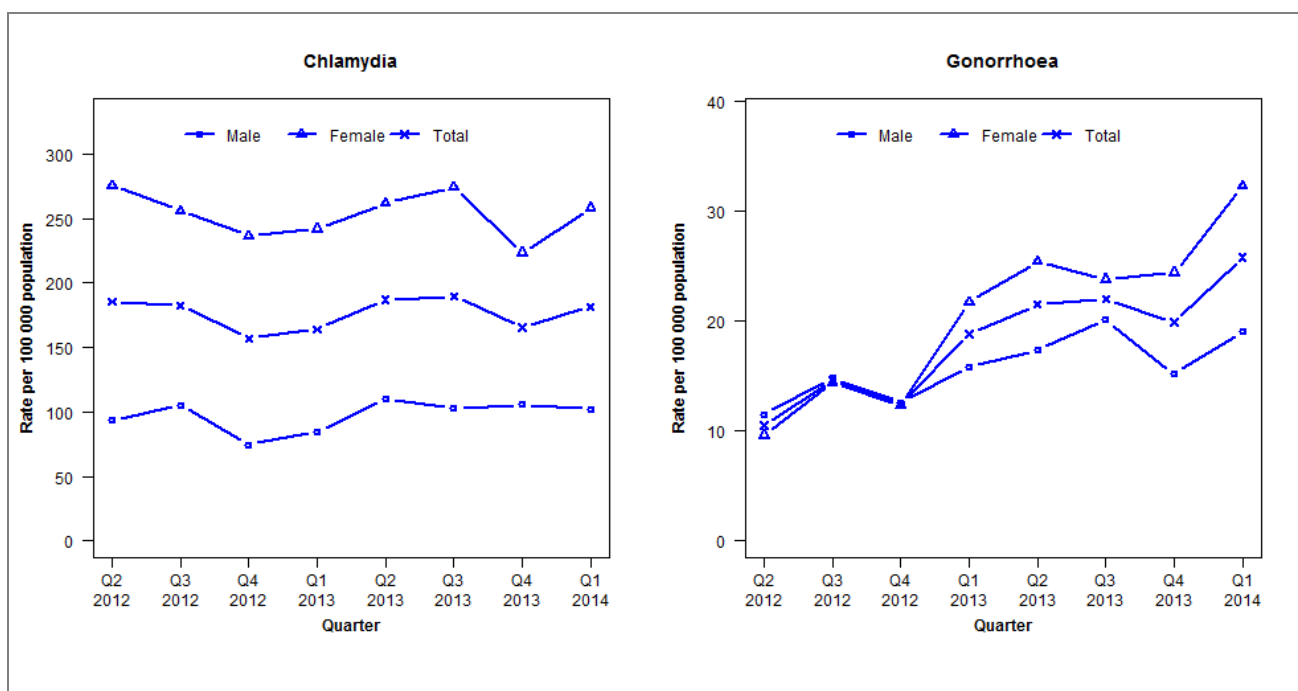


Laboratory surveillance of chlamydia and gonorrhoea: January - March 2014

Quarterly chlamydia and gonorrhoea rates (female, male and total population), Apr 2012 to Mar 2014



Denominator = Statistics New Zealand mid-year population estimates

Note: New data processing methods introduced from Q1 2013 allow for exclusion of repeat tests.

Number of lab confirmed chlamydia cases (female, male and total population) and number of tests per 100 000 population, April 2012 to March 2014

	Q2 2012	Q3 2012	Q4 2012	Q1 2013	Q2 2013	Q3 2013	Q4 2013	Q1 2014
Number of lab-confirmed cases¹	687	677	581	612	697	707	617	677
<i>Female</i>	517	481	444	457	495	518	422	488
<i>Male</i>	170	192	136	155	202	189	194	188
Tests per 100 000 population²	1953	2011	1849	1983	1999	2164	1959	2082

¹Total includes cases where sex is not reported

²Denominator = Statistics New Zealand mid-year population estimates

Number of lab confirmed gonorrhoea cases (female, male and total population) and number of tests per 100 000 population, April 2012 to March 2014

	Q2 2012	Q3 2012	Q4 2012	Q1 2013	Q2 2013	Q3 2013	Q4 2013	Q1 2014
Number of lab-confirmed cases¹	39	54	46	70	80	82	74	96
<i>Female</i>	18	27	23	41	48	45	46	61
<i>Male</i>	21	27	23	29	32	37	28	35
Tests per 100 000 population²	1720	1800	2092	2632	2579	2900	2508	2573

¹Total includes cases where sex is not reported

²Denominator = Statistics New Zealand mid-year population estimates