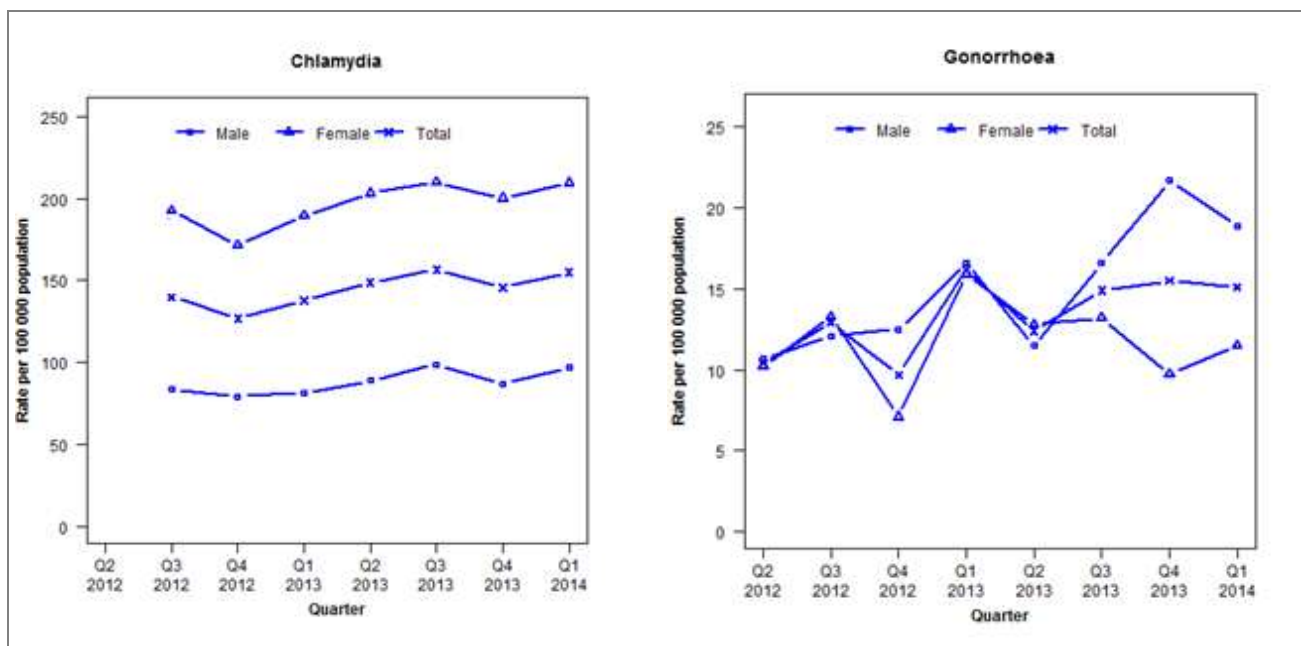


Laboratory surveillance of chlamydia and gonorrhoea: January - March 2014

Quarterly chlamydia and gonorrhoea rates (female, male and total population), Apr 2012 to Mar 2014



Denominator = Statistics New Zealand mid-year population estimates

Note: New data processing methods introduced from Q1 2013 allow for exclusion of repeat tests. Chlamydia data only available from Q3 2012. NAAT (nucleic acid amplification testing) for gonorrhoea testing introduced during Q2 2012.

Number of lab confirmed chlamydia cases (female, male and total population) and number of tests per 100 000 population, April 2012 to March 2014

	Q2 2012	Q3 2012	Q4 2012	Q1 2013	Q2 2013	Q3 2013	Q4 2013	Q1 2014
Number of lab-confirmed cases¹	-	618	560	611	661	695	646	688
<i>Female</i>	-	435	387	430	461	476	454	475
<i>Male</i>	-	180	171	177	193	215	189	211
Tests per 100 000 population²	-	2347	2179	2268	2268	2437	2323	2424

¹Total includes cases where sex is not reported²Denominator = Statistics New Zealand mid-year population estimates

Number of lab confirmed gonorrhoea cases (female, male and total population) and number of tests per 100 000 population, April 2012 to March 2014

	Q2 2012	Q3 2012	Q4 2012	Q1 2013	Q2 2013	Q3 2013	Q4 2013	Q1 2014
Number of lab-confirmed cases¹	46	57	43	72	55	66	69	67
<i>Female</i>	23	30	16	36	29	30	22	26
<i>Male</i>	23	26	27	36	25	36	47	41
Tests per 100 000 population²	2060	2339	2173	2262	2264	2416	2230	2403

¹Total includes cases where sex is not reported²Denominator = Statistics New Zealand mid-year population estimates