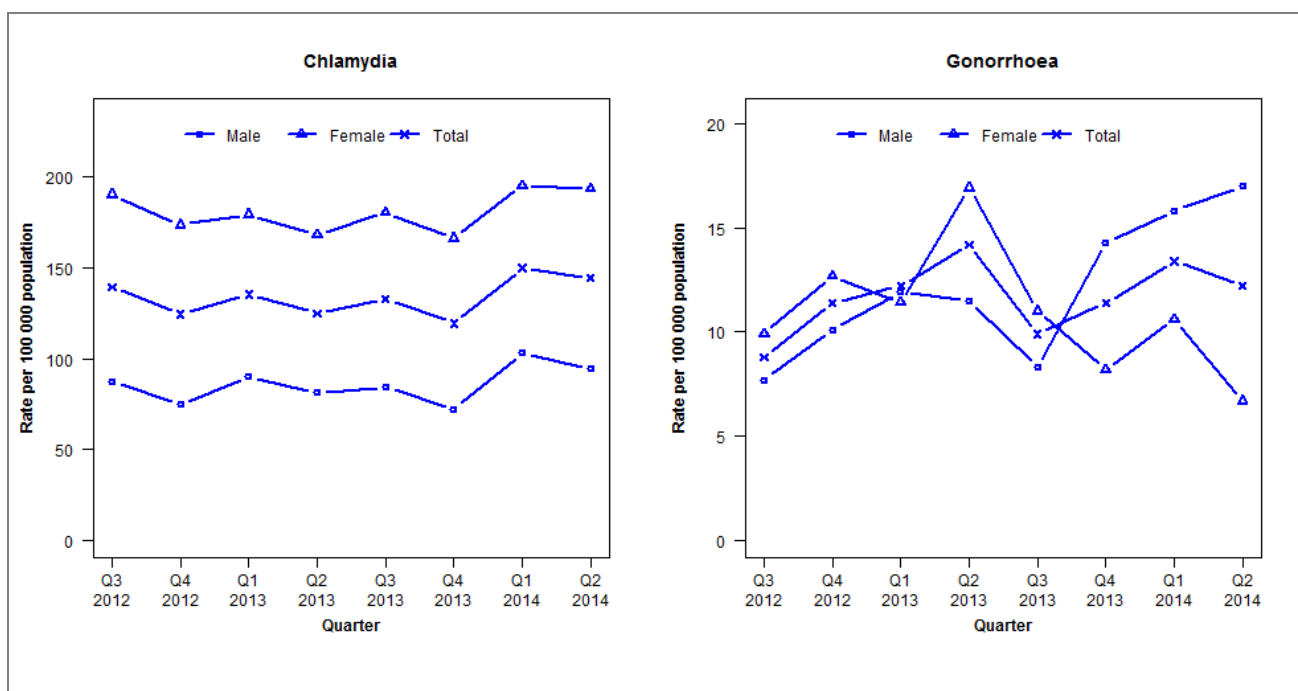


Laboratory surveillance of chlamydia and gonorrhoea: April - June 2014

Quarterly chlamydia and gonorrhoea rates (female, male and total population), July 2012 to June 2014



Denominator = Statistics New Zealand mid-year population estimates

Note: New data processing methods introduced from Q1 2013 allow for exclusion of repeat tests. Data from all labs in Canterbury DHB only available from Q3 2012

Number of lab confirmed chlamydia cases (female, male and total population) and number of tests per 100 000 population, July 2012 to June 2014

| | Q3 2012 | Q4 2012 | Q1 2013 | Q2 2013 | Q3 2013 | Q4 2013 | Q1 2014 | Q2 2014 |
|--|---------|---------|---------|---------|---------|---------|---------|---------|
| Number of lab-confirmed cases¹ | 697 | 623 | 686 | 634 | 674 | 606 | 760 | 732 |
| <i>Female</i> | 480 | 438 | 457 | 428 | 460 | 424 | 497 | 493 |
| <i>Male</i> | 217 | 185 | 227 | 205 | 213 | 182 | 260 | 238 |
| Tests per 100 000 population² | 1987 | 1916 | 2063 | 2096 | 2108 | 1977 | 2151 | 2140 |

¹Total includes cases where sex is not reported

²Denominator = Statistics New Zealand mid-year population estimates

Number of lab confirmed gonorrhoea cases (female, male and total population) and number of tests per 100 000 population, July 2012 to June 2014

| | Q3 2012 | Q4 2012 | Q1 2013 | Q2 2013 | Q3 2013 | Q4 2013 | Q1 2014 | Q2 2014 |
|--|---------|---------|---------|---------|---------|---------|---------|---------|
| Number of lab-confirmed cases¹ | 44 | 57 | 62 | 72 | 50 | 58 | 68 | 62 |
| <i>Female</i> | 25 | 32 | 29 | 43 | 28 | 21 | 27 | 17 |
| <i>Male</i> | 19 | 25 | 30 | 29 | 21 | 36 | 40 | 43 |
| Tests per 100 000 population² | 1987 | 1916 | 2665 | 3007 | 2994 | 2687 | 2890 | 2835 |

¹Total includes cases where sex is not reported

²Denominator = Statistics New Zealand mid-year population estimates