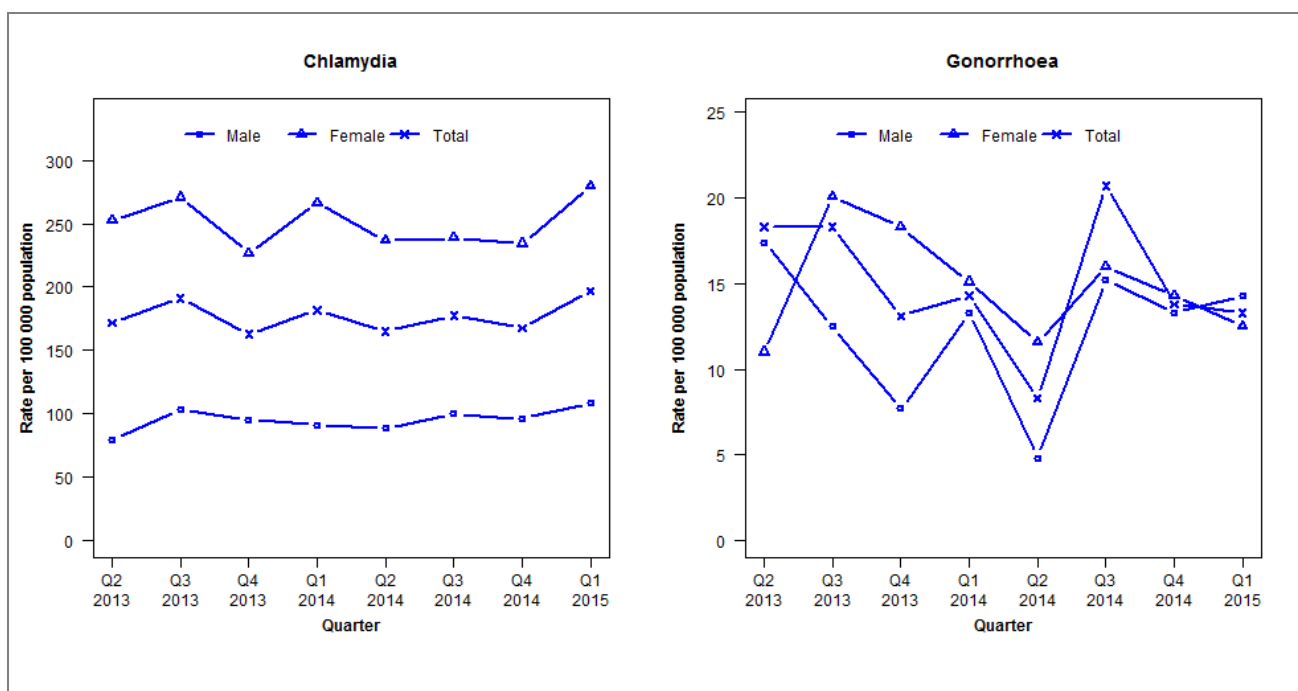


Laboratory surveillance of chlamydia and gonorrhoea: January - March 2015

Quarterly chlamydia and gonorrhoea rates (female, male and total population), Apr 2013 to Mar 2015



Denominator = Statistics New Zealand mid-year population estimates

Note: Data processing methods allow for exclusion of repeat tests. Additional 2014 data received has been included and may have impacted slightly on the counts and rates produced. NAAT (nucleic acid amplification testing) for gonorrhoea testing was introduced in Q3 2013.

Number of lab confirmed chlamydia cases (female, male and total population) and number of tests per 100 000 population, April 2013 to March 2015

	Q2 2013	Q3 2013	Q4 2013	Q1 2014	Q2 2014	Q3 2014	Q4 2014	Q1 2015
Number of lab-confirmed cases¹	366	407	347	395	359	386	364	428
<i>Female</i>	276	296	248	299	266	268	263	314
<i>Male</i>	82	107	99	96	93	105	101	114
Tests per 100 000 population²	1976	2027	2003	2117	1983	2092	2002	2161

¹Total includes cases where sex is not reported

²Denominator = Statistics New Zealand mid-year population estimates

Number of lab confirmed gonorrhoea cases (female, male and total population) and number of tests per 100 000 population, April 2013 to March 2015

	Q2 2013	Q3 2013	Q4 2013	Q1 2014	Q2 2014	Q3 2014	Q4 2014	Q1 2015
Number of lab-confirmed cases¹	39	39	28	31	18	45	30	29
<i>Female</i>	12	22	20	17	13	18	16	14
<i>Male</i>	18	13	8	14	5	16	14	15
Tests per 100 000 population²	1393	2011	2153	2173	1984	2093	2006	2167

¹Total includes cases where sex is not reported

²Denominator = Statistics New Zealand mid-year population estimates