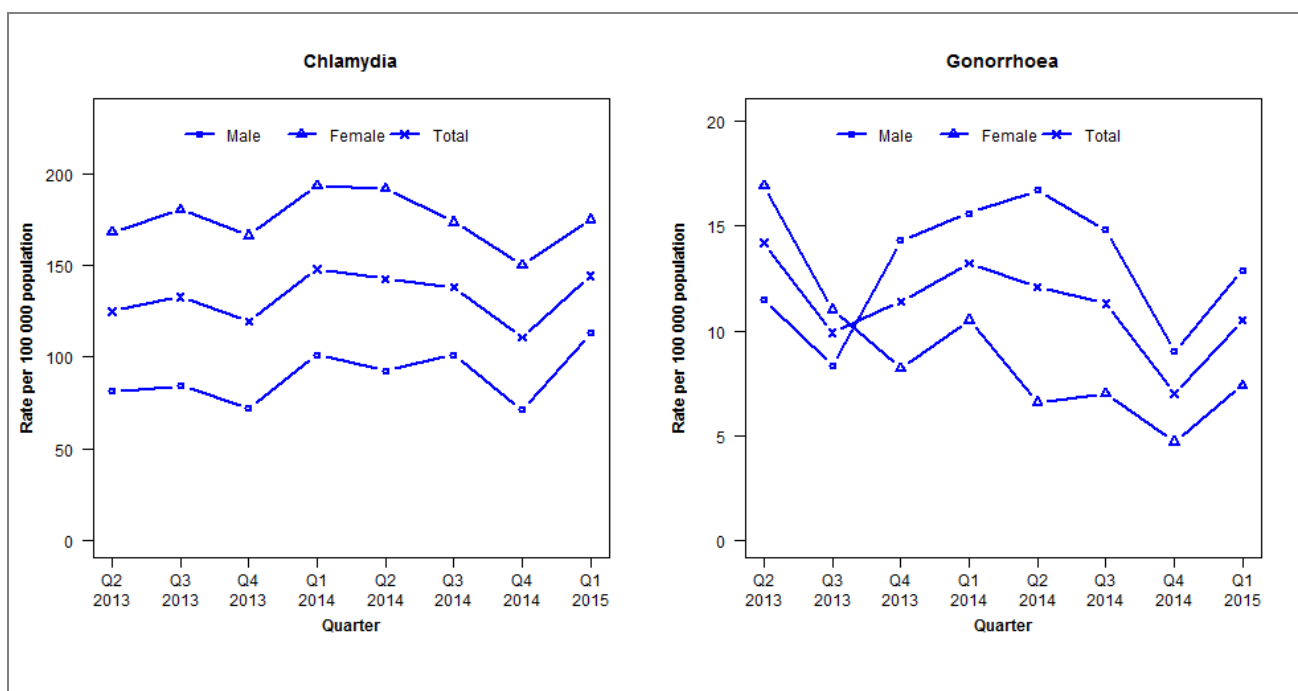


Laboratory surveillance of chlamydia and gonorrhoea: January - March 2015

Quarterly chlamydia and gonorrhoea rates (female, male and total population), Apr 2013 to Mar 2015



Denominator = Statistics New Zealand mid-year population estimates

Note: Data processing methods allow for exclusion of repeat tests.

Number of lab confirmed chlamydia cases (female, male and total population) and number of tests per 100 000 population, April 2013 to March 2015

	Q2 2013	Q3 2013	Q4 2013	Q1 2014	Q2 2014	Q3 2014	Q4 2014	Q1 2015
Number of lab-confirmed cases¹	634	674	606	760	732	709	569	741
<i>Female</i>	428	460	424	497	493	446	386	450
<i>Male</i>	205	213	182	260	238	260	183	290
Tests per 100 000 population²	2095	2107	1976	2124	2112	2205	2014	2219

¹Total includes cases where sex is not reported

²Denominator = Statistics New Zealand mid-year population estimates

Number of lab confirmed gonorrhoea cases (female, male and total population) and number of tests per 100 000 population, April 2013 to March 2015

	Q2 2013	Q3 2013	Q4 2013	Q1 2014	Q2 2014	Q3 2014	Q4 2014	Q1 2015
Number of lab-confirmed cases¹	72	50	58	68	62	58	36	54
<i>Female</i>	43	28	21	27	17	18	12	19
<i>Male</i>	29	21	36	40	43	38	23	33
Tests per 100 000 population²	3006	2993	2686	2853	2799	2929	2685	2899

¹Total includes cases where sex is not reported

²Denominator = Statistics New Zealand mid-year population estimates