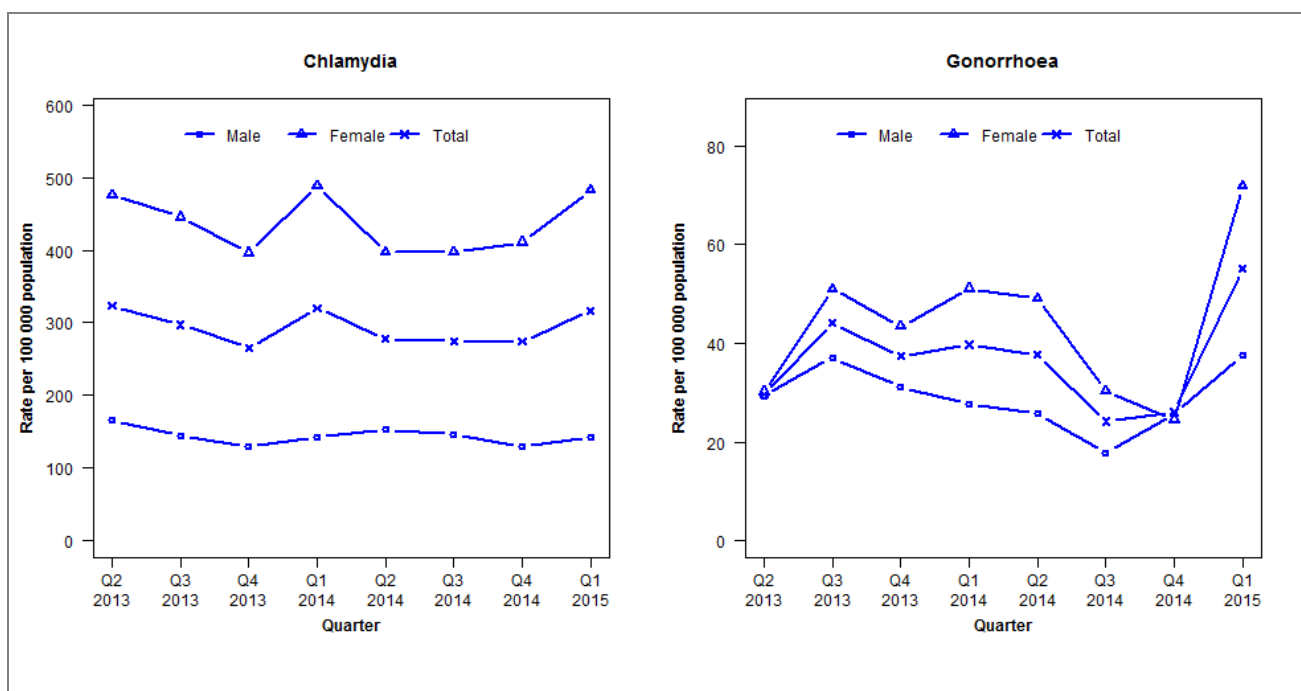


Laboratory surveillance of chlamydia and gonorrhoea: January - March 2015

Quarterly chlamydia and gonorrhoea rates (female, male and total population), Apr 2013 to Mar 2015



Denominator = Statistics New Zealand mid-year population estimates

Note: Data processing methods allow for exclusion of repeat tests. Additional 2014 data received has been included and may have impacted slightly on the counts and rates produced. NAAT Gonorrhoea testing introduced for Pathlab Rotorua 1 July 2013.

Number of lab confirmed chlamydia cases (female, male and total population) and number of tests per 100 000 population, April 2013 to March 2015

	Q2 2013	Q3 2013	Q4 2013	Q1 2014	Q2 2014	Q3 2014	Q4 2014	Q1 2015
Number of lab-confirmed cases¹	337	310	277	331	287	284	283	327
<i>Female</i>	252	236	210	258	210	210	217	255
<i>Male</i>	85	74	66	72	77	74	65	72
Tests per 100 000 population²	2873	2801	2602	2858	2661	2782	2654	2982

¹Total includes cases where sex is not reported

²Denominator = Statistics New Zealand mid-year population estimates

Number of lab confirmed gonorrhoea cases (female, male and total population) and number of tests per 100 000 population, April 2013 to March 2015

	Q2 2013	Q3 2013	Q4 2013	Q1 2014	Q2 2014	Q3 2014	Q4 2014	Q1 2015
Number of lab-confirmed cases¹	31	46	39	41	39	25	27	57
<i>Female</i>	16	27	23	27	26	16	13	38
<i>Male</i>	15	19	16	14	13	9	13	19
Tests per 100 000 population²	2089	3048	2688	2899	2671	2791	2665	3000

¹Total includes cases where sex is not reported

²Denominator = Statistics New Zealand mid-year population estimates