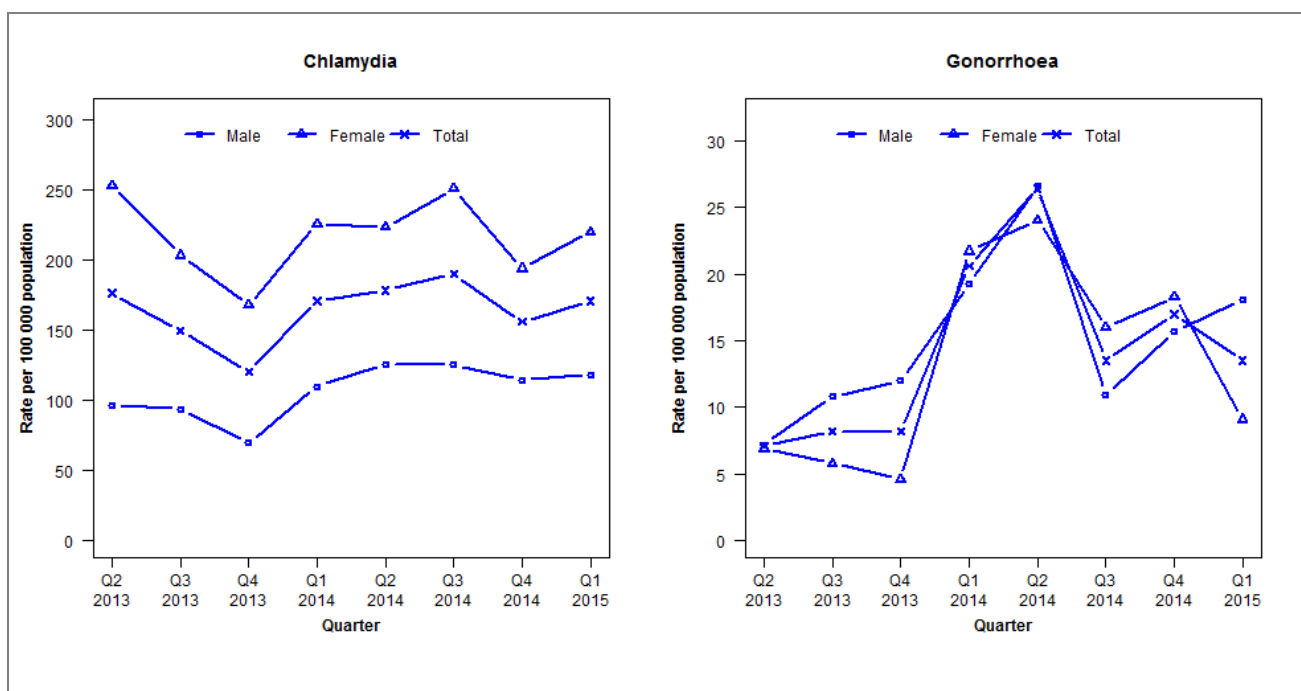


## Laboratory surveillance of chlamydia and gonorrhoea: January - March 2015

### Quarterly chlamydia and gonorrhoea rates (female, male and total population), Apr 2013 to Mar 2015



Denominator = Statistics New Zealand mid-year population estimates

Note: Data processing procedures allow for exclusion of repeat tests. NAAT testing introduced in Q1 2014.

### Number of lab confirmed chlamydia cases (female, male and total population) and number of tests per 100 000 population, April 2013 to March 2015

	Q2 2013	Q3 2013	Q4 2013	Q1 2014	Q2 2014	Q3 2014	Q4 2014	Q1 2015
<b>Number of lab-confirmed cases<sup>1</sup></b>	300	255	205	291	304	324	266	291
<i>Female</i>	220	177	146	198	196	220	170	193
<i>Male</i>	80	78	58	91	104	104	95	98
<b>Tests per 100 000 population<sup>2</sup></b>	1752	1737	1564	1686	1772	1903	1744	1912

<sup>1</sup>Total includes cases where sex is not reported

<sup>2</sup>Denominator = Statistics New Zealand mid-year population estimates

### Number of lab confirmed gonorrhoea cases (female, male and total population) and number of tests per 100 000 population, April 2013 to March 2015

	Q2 2013	Q3 2013	Q4 2013	Q1 2014	Q2 2014	Q3 2014	Q4 2014	Q1 2015
<b>Number of lab-confirmed cases<sup>1</sup></b>	12	14	14	35	45	23	29	23
<i>Female</i>	6	5	4	19	21	14	16	8
<i>Male</i>	6	9	10	16	22	9	13	15
<b>Tests per 100 000 population<sup>2</sup></b>	1474	1454	1276	1591	1809	1943	1794	1962

<sup>1</sup>Total includes cases where sex is not reported

<sup>2</sup>Denominator = Statistics New Zealand mid-year population estimates