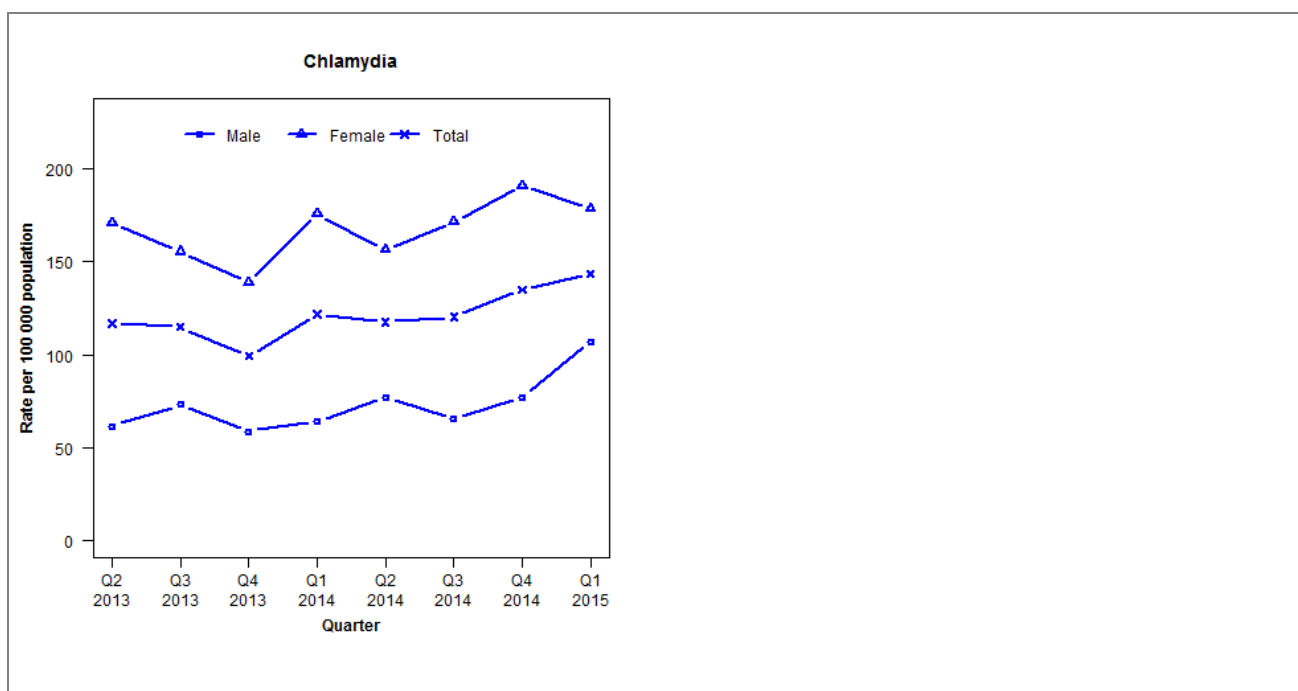


## Laboratory surveillance of chlamydia and gonorrhoea: January - March 2015

Quarterly chlamydia and gonorrhoea rates (female, male and total population), Apr 2013 to Mar 2015



Denominator = Statistics New Zealand mid-year population estimates

Note: Data processing procedures allow for exclusion of repeat tests. Gonorrhoea rates are not presented as there are fewer than five cases in many quarters.

### Number of lab confirmed chlamydia cases (female, male and total population) and number of tests per 100 000 population, April 2013 to March 2015

	Q2 2013	Q3 2013	Q4 2013	Q1 2014	Q2 2014	Q3 2014	Q4 2014	Q1 2015
<b>Number of lab-confirmed cases<sup>1</sup></b>	165	162	140	174	168	172	193	205
<i>Female</i>	122	111	99	128	114	125	139	130
<i>Male</i>	43	51	41	45	54	46	54	75
<b>Tests per 100 000 population<sup>2</sup></b>	1612	1679	1519	1684	1603	1601	1662	1714

<sup>1</sup>Total includes cases where sex is not reported

<sup>2</sup>Denominator = Statistics New Zealand mid-year population estimates

### Number of lab confirmed gonorrhoea cases (female, male and total population) and number of tests per 100 000 population, April 2013 to March 2015

	Q2 2013	Q3 2013	Q4 2013	Q1 2014	Q2 2014	Q3 2014	Q4 2014	Q1 2015
<b>Number of lab-confirmed cases<sup>1</sup></b>	7	4	5	6	22	13	6	14
<i>Female</i>	1	2	1	1	11	8	4	7
<i>Male</i>	6	2	4	5	11	5	2	7
<b>Tests per 100 000 population<sup>2</sup></b>	3268	3321	3050	3186	1635	1611	1672	1734

<sup>1</sup>Total includes cases where sex is not reported

<sup>2</sup>Denominator = Statistics New Zealand mid-year population estimates