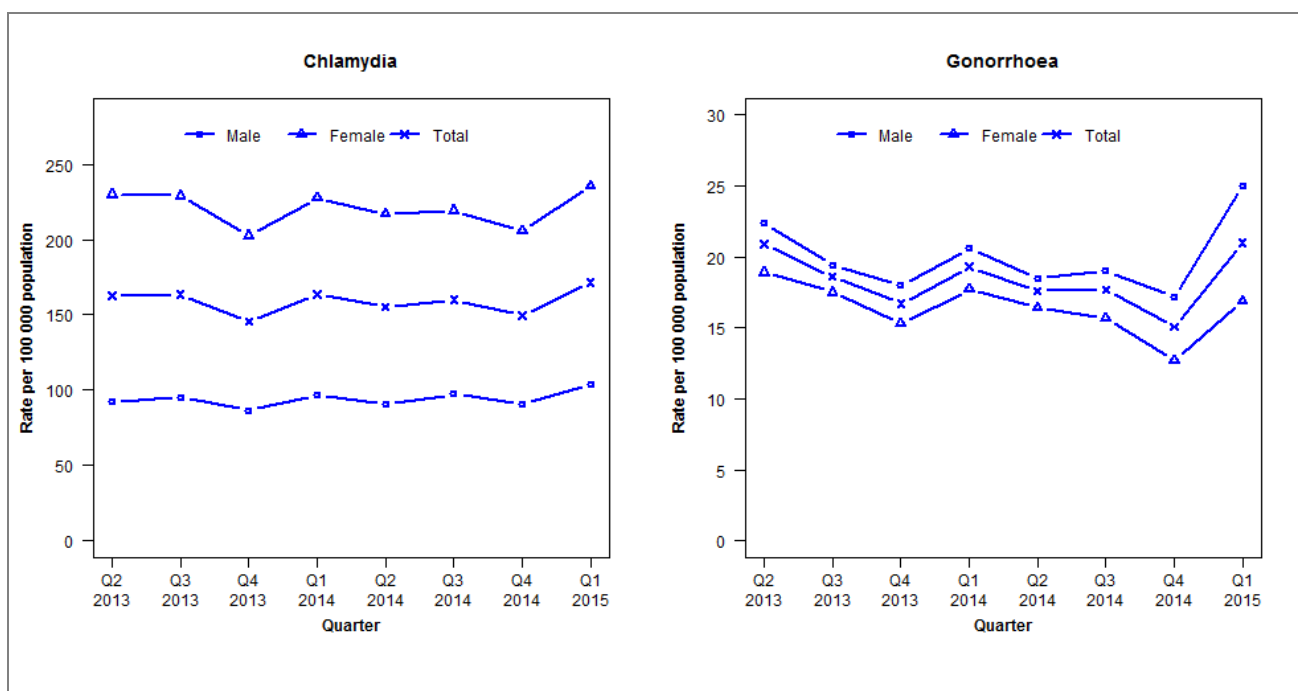


Laboratory surveillance of chlamydia and gonorrhoea: January - March 2015

Quarterly chlamydia and gonorrhoea rates (female, male and total population), Apr 2013 to Mar 2015



Denominator = Statistics New Zealand mid-year population estimates

Note: Data processing methods allow for exclusion of repeat tests. NAAT (nucleic acid amplification testing) for gonorrhoea has been introduced in the majority of laboratories since 2012. Refer to DHB level reports for further details. Northland data incomplete from Q2 2013, but complete for Q1 2015. Data not received from Waitemata DHB for all quarters in 2013. Additional 2014 data received has been included and may have impacted slightly on the counts and rates produced.

Number of lab confirmed chlamydia cases (female, male and total population) and number of tests per 100 000 population, April 2013 to March 2015

	Q2 2013	Q3 2013	Q4 2013	Q1 2014	Q2 2014	Q3 2014	Q4 2014	Q1 2015
Number of lab-confirmed cases¹	7268	7309	6515	7379	7005	7217	6740	7725
<i>Female</i>	5215	5199	4600	5231	4989	5041	4733	5416
<i>Male</i>	2029	2098	1903	2129	1999	2148	2001	2298
Tests per 100 000 population²	2173	2267	2106	2228	2231	2312	2202	2374

¹Total includes cases where sex is not reported

²Denominator = Statistics New Zealand mid-year population estimates

Number of lab confirmed gonorrhoea cases (female, male and total population) and number of tests per 100 000 population, April 2013 to March 2015

	Q2 2013	Q3 2013	Q4 2013	Q1 2014	Q2 2014	Q3 2014	Q4 2014	Q1 2015
Number of lab-confirmed cases¹	932	830	748	870	794	800	679	946
<i>Female</i>	429	397	347	408	378	362	291	388
<i>Male</i>	492	427	396	455	409	420	380	553
Tests per 100 000 population²	2477	2617	2394	2536	2471	2560	2441	2653

¹Total includes cases where sex is not reported

²Denominator = Statistics New Zealand mid-year population estimates