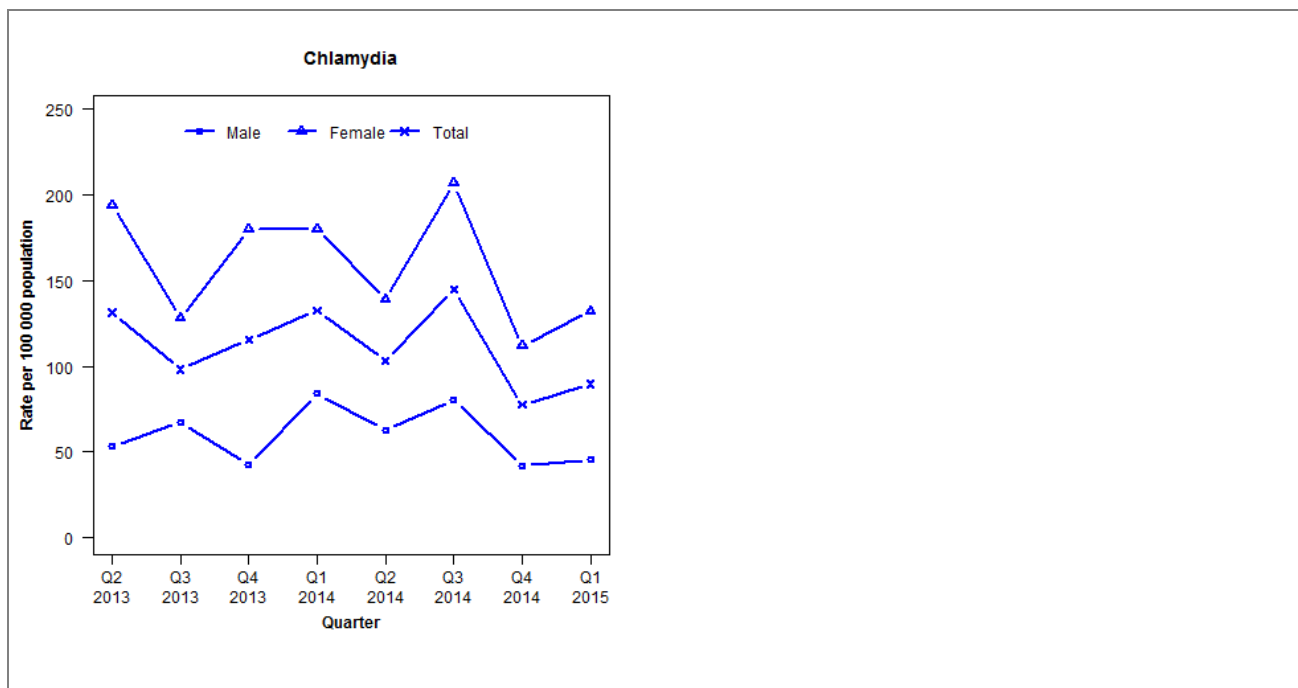


## Laboratory surveillance of chlamydia and gonorrhoea: January - March 2015

### Quarterly chlamydia and gonorrhoea rates (female, male and total population), Apr 2013 to Mar 2015



Denominator = Statistics New Zealand mid-year population estimates

Note: Data processing methods introduced allow for exclusion of repeat tests. Gonorrhoea rates are not presented as there are fewer than five cases in many quarters.

### Number of lab confirmed chlamydia cases (female, male and total population) and number of tests per 100 000 population, April 2013 to March 2015

	Q2 2013	Q3 2013	Q4 2013	Q1 2014	Q2 2014	Q3 2014	Q4 2014	Q1 2015
<b>Number of lab-confirmed cases<sup>1</sup></b>	75	56	66	77	60	84	45	52
<i>Female</i>	56	37	52	53	41	61	33	39
<i>Male</i>	15	19	12	24	18	23	12	13
<b>Tests per 100 000 population<sup>2</sup></b>	1250	1350	1487	1455	1346	1524	1319	1513

<sup>1</sup>Total includes cases where sex is not reported

<sup>2</sup>Denominator = Statistics New Zealand mid-year population estimates

### Number of lab confirmed gonorrhoea cases (female, male and total population) and number of tests per 100 000 population, April 2013 to March 2015

	Q2 2013	Q3 2013	Q4 2013	Q1 2014	Q2 2014	Q3 2014	Q4 2014	Q1 2015
<b>Number of lab-confirmed cases<sup>1</sup></b>	2	2	2	6	5	2	2	0
<i>Female</i>	0	1	1	2	0	0	0	0
<i>Male</i>	2	1	0	4	4	2	1	0
<b>Tests per 100 000 population<sup>2</sup></b>	1392	1736	1940	1782	1661	1806	1687	1920

<sup>1</sup>Total includes cases where sex is not reported

<sup>2</sup>Denominator = Statistics New Zealand mid-year population estimates