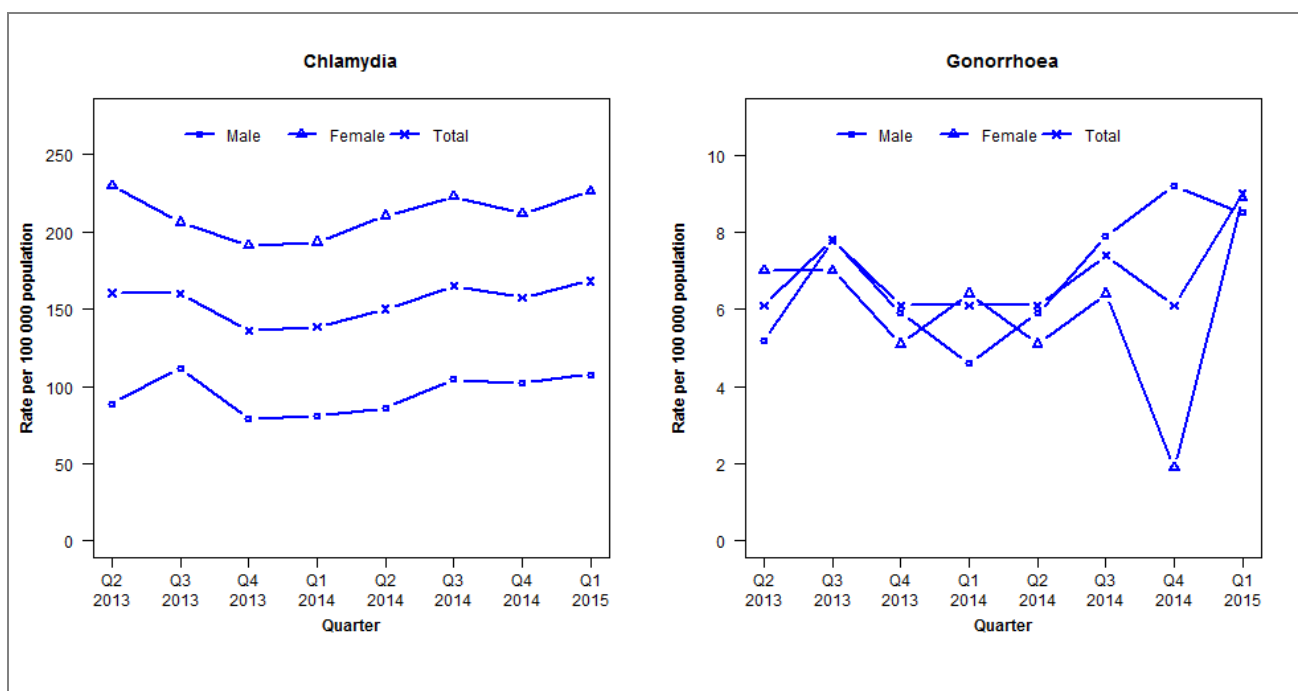


Laboratory surveillance of chlamydia and gonorrhoea: January - March 2015

Quarterly chlamydia and gonorrhoea rates (female, male and total population), Apr 2013 to Mar 2015



Denominator = Statistics New Zealand mid-year population estimates

Note: Data processing methods allow for exclusion of repeat tests.

Number of lab confirmed chlamydia cases (female, male and total population) and number of tests per 100 000 population, April 2013 to March 2015

	Q2 2013	Q3 2013	Q4 2013	Q1 2014	Q2 2014	Q3 2014	Q4 2014	Q1 2015
Number of lab-confirmed cases¹	496	495	421	429	465	511	488	521
<i>Female</i>	359	322	299	304	331	351	333	356
<i>Male</i>	136	171	121	123	131	159	155	164
Tests per 100 000 population²	2366	2470	2172	2272	2357	2467	2311	2413

¹Total includes cases where sex is not reported

²Denominator = Statistics New Zealand mid-year population estimates

Number of lab confirmed gonorrhoea cases (female, male and total population) and number of tests per 100 000 population, April 2013 to March 2015

	Q2 2013	Q3 2013	Q4 2013	Q1 2014	Q2 2014	Q3 2014	Q4 2014	Q1 2015
Number of lab-confirmed cases¹	19	24	19	19	19	23	19	28
<i>Female</i>	11	11	8	10	8	10	3	14
<i>Male</i>	8	12	9	7	9	12	14	13
Tests per 100 000 population²	2451	2552	2235	2330	2414	2520	2360	2479

¹Total includes cases where sex is not reported

²Denominator = Statistics New Zealand mid-year population estimates